

À des fins de recherche uniquement

# Anticorps Polyclonal de lapin anti-CDC23



Numéro de catalogue: 10683-1-AP

## Informations de base

<b>Numéro de catalogue:</b> 10683-1-AP	<b>Numéro d'acquisition GenBank:</b> BC005258	<b>Méthode de purification:</b> Purification par affinité contre l'antigène
<b>Taille:</b> 150ul , Concentration: 600 µg/ml by Nanodrop and 253 µg/ml by Bradford method using BSA as the standard;	<b>Identification du gène (NCBI):</b> 8697	<b>Dilutions recommandées:</b> WB 1:500-1:3000
<b>Hôte:</b> Lapin	<b>Nom complet:</b> cell division cycle 23 homolog (S. cerevisiae)	
<b>Isotype:</b> IgG	<b>MW calculé:</b> 68 kDa	
<b>Immunogen Catalog Number:</b> AG1068	<b>MW observés:</b> 69 kDa	

## Applications

<b>Applications testées:</b> WB, ELISA	<b>Contrôles positifs:</b> WB : cellules MOLT-4, cellules Caco-2, cellules HEK-293, cellules Jurkat, cellules K-562
<b>Spécificité de l'espèce:</b> Humain, rat, souris	

## Informations générales

CDC23 (cell division cycle protein 23 homolog) is also named ANAPC8 and belongs to the APC8/CDC23 family. It is a subunit of the anaphase-promoting complex (APC), which functions at the metaphase-to-anaphase transition of the cell cycle and is regulated by spindle checkpoint proteins. It can be phosphorylated and the phosphorylation of Thr-562 occurs specifically during mitosis (PMID:19690332). It has 3 isoforms produced by alternative splicing with the molecular weight of 69 kDa, 17 kDa, and 56 kDa.

## Stockage

**Stockage:**  
Stocker à -20°C. Stable pendant un an après l'expédition.  
**Tampon de stockage:**  
PBS avec azoture de sodium à 0,02 % et glycérol à 50 % pH 7,3  
L'aliquotage n'est pas nécessaire pour le stockage à -20C

\*\*\* Les 20ul contiennent 0,1% de BSA.

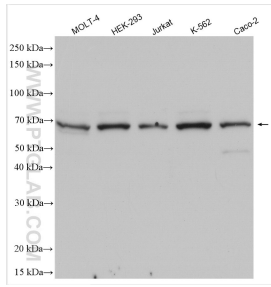
For technical support and original validation data for this product please contact:

T: 1 (888) 4PTGLAB (1-888-478-4522) (toll free in USA), or 1(312) 455-8498 (outside USA)

E: proteintech@ptglab.com  
W: ptglab.com

This product is exclusively available under Proteintech Group brand and is not available to purchase from any other manufacturer.

## Données de validation sélectionnées



Various lysates were subjected to SDS PAGE followed by western blot with 10683-1-AP (CDC23 antibody) at dilution of 1:1500 incubated at room temperature for 1.5 hours.