

À des fins de recherche uniquement

Anticorps Polyclonal de lapin anti-GMF Beta



Numéro de catalogue: 10690-1-AP

Phare

9 Publications

Informations de base

Numéro de catalogue:

10690-1-AP

Numéro d'acquisition GenBank:

BC005359

Méthode de purification:

Purification par affinité contre l'antigène

Taille:

150ul, Concentration: 300 µg/ml by Nanodrop and 133 µg/ml by Bradford method using BSA as the standard;

Identification du gène (NCBI):

2764

Dilutions recommandées:

WB 1:2000-1:10000

IHC 1:50-1:500

IF 1:50-1:500

Hôte:

Lapin

MW calculé

17 kDa

Isotype:

IgG

MW observés:

17 kDa

Immunogen Catalog Number:

AG1104

Applications

Applications testées:

IF, IHC, WB, ELISA

Demandes citées:

IF, IHC, WB

Spécificité de l'espèce:

Humain, rat, souris

Espèces citées:

Humain, poisson-zèbre, souris

Remarque-IHC: il est suggéré de démasquer l'antigène avec un tampon de TE buffer pH 9,0; (*) A défaut, 'le démasquage de l'antigène peut être effectué avec un tampon citrate pH 6,0.

Contrôles positifs:

WB : tissu cérébral de souris, cellules MG U-87, cellules PC-12, cellules SH-SY5Y, tissu cardiaque de souris, tissu cardiaque humain, tissu cérébral de rat, tissu cérébral humain

IHC : tissu cérébral de souris,

IF : tissu cérébral de souris,

Informations générales

GMFB, Glia maturation factor beta, is a nerve growth factor implicated in nervous system development. It was reported that GMF-beta promotes the phenotypic expression of glia and neurons and inhibits the proliferation of their respective tumors in culture cells. GMF-beta protein is specific to the brain where it is expressed in glial cells (mainly astrocytes) and insome neurons. Higher levels of GMFB were found in the central nervous system, except for the spinal cord, and in thymus and colon. GMFB was positive in the cytoplasm and nuclei of all cells in whole brain.

Publications notables

Autrice	Pubmed ID	Journal	Application
Miao Zhang	36175800	Int J Legal Med	WB
Wan Sun	34796110	Front Oncol	WB
Tong Zhu	35860559	Front Oncol	WB,IF

Stockage

Stockage:

Stocker à -20°C. Stable pendant un an après l'expédition.

Tampon de stockage:

PBS avec azoture de sodium à 0,02 % et glycérol à 50 % pH 7,3

L'aliquotage n'est pas nécessaire pour le stockage à -20C

*** Les 20ul contiennent 0,1% de BSA.

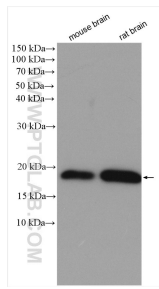
For technical support and original validation data for this product please contact:

T: 1 (888) 4PTGLAB (1-888-478-4522) (toll free in USA), or 1(312) 455-8498 (outside USA)

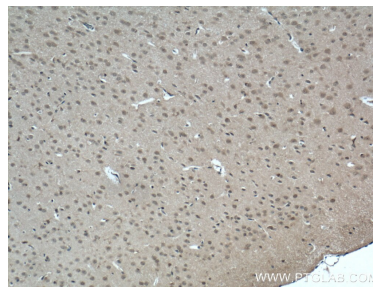
E: proteintech@ptglab.com
W: ptglab.com

This product is exclusively available under Proteintech Group brand and is not available to purchase from any other manufacturer.

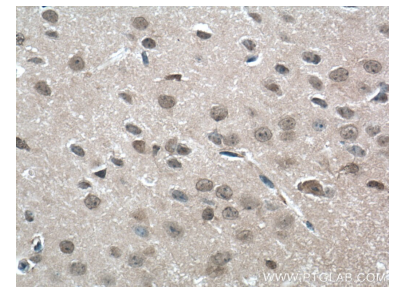
Données de validation sélectionnées



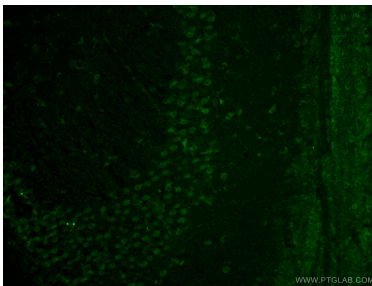
Various lysates were subjected to SDS PAGE followed by western blot with 10690-1-AP (GMF Beta antibody) at dilution of 1:8000 incubated at room temperature for 1.5 hours.



Immunohistochemical analysis of paraffin-embedded mouse brain tissue slide using 10690-1-AP (GMF-beta antibody) at dilution of 1:200 (under 10x lens. Heat mediated antigen retrieval with Tris-EDTA buffer (pH 9.0).



Immunohistochemical analysis of paraffin-embedded mouse brain tissue slide using 10690-1-AP (GMF-beta antibody) at dilution of 1:200 (under 40x lens. Heat mediated antigen retrieval with Tris-EDTA buffer (pH 9.0).



Immunofluorescent analysis of (4% PFA) fixed mouse brain tissue using 10690-1-AP (GMF-beta antibody) at dilution of 1:50 and Alexa Fluor 488-Conjugated AffiniPure Goat Anti-Rabbit IgG(H+L).