

À des fins de recherche uniquement

Anticorps Polyclonal de lapin anti-RCC1



Numéro de catalogue: 10697-1-AP **Phare**

Informations de base

Numéro de catalogue:
10697-1-AP

Taille:
150ul, Concentration: 400 µg/ml by
Nanodrop and 333 µg/ml by Bradford
method using BSA as the standard;

Hôte:
Lapin

Isotype:
IgG

Immunogen Catalog Number:
AG1042

Numéro d'acquisition GenBank:
BC007300

Identification du gène (NCBI):
751867

Nom complet:
SNHG3-RCC1 readthrough transcript

MW calculé
45 kDa, 48 kDa

MW observés:
68 kDa

Méthode de purification:
Purification par affinité contre
l'antigène

Dilutions recommandées:
WB 1:1000-1:6000
IP 0.5-4.0 ug for IP and 1:500-1:1000
for WB
IHC 1:50-1:500

Applications

Applications testées:
IHC, IP, WB, ELISA

Spécificité de l'espèce:
Humain, rat, souris

**Remarque-IHC: il est suggéré de démasquer
l'antigène avec un tampon de TE buffer pH
9.0; (*) À défaut, le démasquage de
l'antigène peut être effectué avec un
tampon citrate pH 6.0.**

Contrôles positifs:

WB : cellules A431, cellules HEK-293, cellules HEK-
293T, cellules HeLa, cellules Jurkat, cellules Raji,
cellules SGC-7901, tissu testiculaire de souris

IP : cellules HeLa,

IHC : tissu de tumeur ovarienne humain, tissu de
carcinome urothélial humain

Informations générales

CHC1, also named as RCC1, SNHG3-RCC1, promotes the exchange of ran-bound gdp by gtp. It is involved in the regulation of onset of chromosome condensation in the S-phase. Phosphorylation of RCC1 on serines located in or near its nuclear localization signal activates RCC1 to generate RanGTP on mitotic chromosomes, which is required for spindle assembly and chromosome segregation. This antibody is a rabbit polyclonal antibody raised against residues near the C terminus of human RCC1. The geneID has updated as 1104 recently.

Stockage

Stockage:

Stocker à -20°C. Stable pendant un an après l'expédition.

Tampon de stockage:

PBS avec azoture de sodium à 0,02 % et glycérol à 50 % pH 7,3

L'aliquotage n'est pas nécessaire pour le stockage à -20C

*** Les 20ul contiennent 0,1% de BSA.

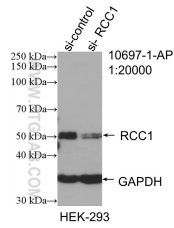
For technical support and original validation data for this product please contact:

T: 1 (888) 4PTGLAB (1-888-478-4522) (toll free
in USA), or 1(312) 455-8498 (outside USA)

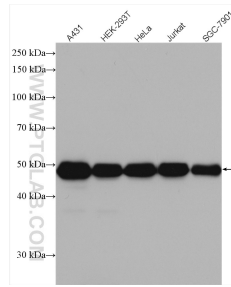
E: proteintech@ptglab.com
W: ptglab.com

This product is exclusively available under Proteintech Group brand and is not available to purchase from any other manufacturer.

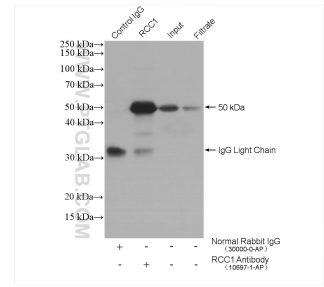
Données de validation sélectionnées



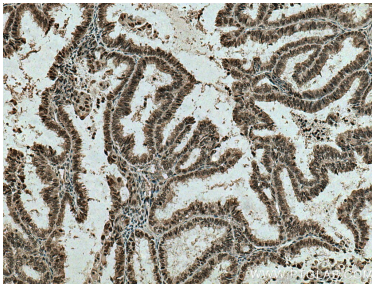
WB result of RCC1 antibody (10697-1-AP; 1:20000; incubated at room temperature for 1.5 hours) with sh-Control and sh-RCC1 transfected HEK-293 cells.



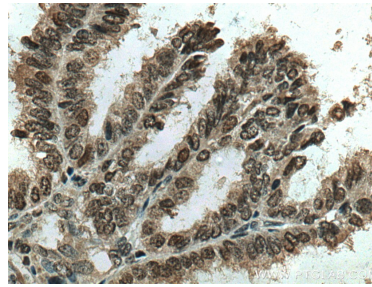
Various lysates were subjected to SDS PAGE followed by western blot with 10697-1-AP (RCC1 antibody) at dilution of 1:3000 incubated at room temperature for 1.5 hours.



IP result of anti-RCC1 (IP:10697-1-AP, 4ug; Detection:10697-1-AP 1:500) with HeLa cells lysate 1600 ug.



Immunohistochemical analysis of paraffin-embedded human ovary tumor tissue slide using 10697-1-AP (RCC1 antibody) at dilution of 1:200 (under 10x lens). Heat mediated antigen retrieval with Tris-EDTA buffer (pH 9.0).



Immunohistochemical analysis of paraffin-embedded human ovary tumor tissue slide using 10697-1-AP (RCC1 antibody) at dilution of 1:200 (under 40x lens). Heat mediated antigen retrieval with Tris-EDTA buffer (pH 9.0).