

À des fins de recherche uniquement

Anticorps Polyclonal de lapin anti-VAMP3/Cellubrevin



Numéro de catalogue: 10702-1-AP

Phare

14 Publications

Informations de base

Numéro de catalogue:
10702-1-AP

Taille:
150ul, Concentration: 700 µg/ml by Nanodrop and 347 µg/ml by Bradford method using BSA as the standard;

Hôte:
Lapin

Isotype:
IgG

Immunogen Catalog Number:
AG1156

Numéro d'acquisition GenBank:
BC005941

Identification du gène (NCBI):
9341

Nom complet:
vesicle-associated membrane protein 3 (cellubrevin)

MW calculé:
11 kDa

MW observés:
11-17 kDa

Méthode de purification:
Purification par affinité contre l'antigène

Dilutions recommandées:
WB 1:500-1:2000
IP 0.5-4.0 ug for IP and 1:500-1:2000 for WB
IHC 1:20-1:200

Applications

Applications testées:
IHC, IP, WB, ELISA

Demandes citées:
Blocking, IF, IHC, WB

Spécificité de l'espèce:
Humain, rat, souris

Espèces citées:
Humain, rat, souris

Remarque-IHC: il est suggéré de démasquer l'antigène avec un tampon de TE buffer pH 9,0; (*) À défaut, 'le démasquage de l'antigène peut être effectué avec un tampon citrate pH 6,0.

Contrôles positifs:

WB : cellules HEK-293, cellules MCF-7, tissu cérébral de souris

IP : cellules HEK-293,

IHC : tissu cardiaque humain, tissu rénal humain

Informations générales

VAMP3, also named as cellubrevin or synaptobrevin 3, is a member of the vesicle-associated membrane protein (VAMP)/synaptobrevin family. VAMP3 is a v-SNARE (soluble NSF-attachment protein receptor). Characterized by a common sequence called the SNARE motif, SNARE proteins are involved in membrane fusion and vesicular transport (PMID: 11252968). VAMP3 resides in recycling endosomes and endosome-derived transport vesicles, involved in regulating membrane traffic. It is implicated in recycling of transferrin receptors, secretion of alpha-granules in platelets, and membrane trafficking during cell migration.

Publications notables

Autrice	Pubmed ID	Journal	Application
Yonglu Che	31712554	Nat Commun	WB, IF
Juan-Juan Zhu	33224946	Front Cell Dev Biol	IF
Xiaoli Wang	29785746	Proteomics	WB

Stockage

Stockage:

Stocker à -20°C. Stable pendant un an après l'expédition.

Tampon de stockage:

PBS avec azoture de sodium à 0,02 % et glycérol à 50 % pH 7,3

L'aliquotage n'est pas nécessaire pour le stockage à -20C

*** Les 20ul contiennent 0,1% de BSA.

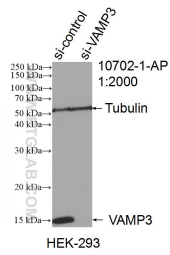
For technical support and original validation data for this product please contact:

T: 1 (888) 4PTGLAB (1-888-478-4522) (toll free in USA), or 1(312) 455-8498 (outside USA)

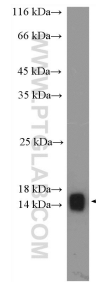
E: proteintech@ptglab.com
W: ptglab.com

This product is exclusively available under Proteintech Group brand and is not available to purchase from any other manufacturer.

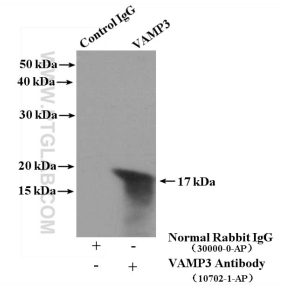
Données de validation sélectionnées



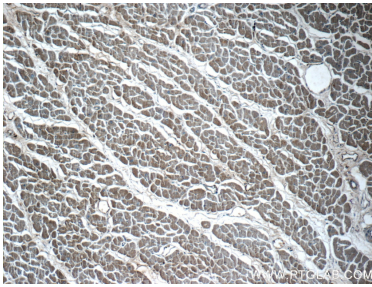
WB result of VAMP3/Cellubrevin antibody (10702-1-AP; 1:2000; incubated at room temperature for 1.5 hours) with sh-Control and sh-VAMP3/Cellubrevin transfected HEK-293 cells.



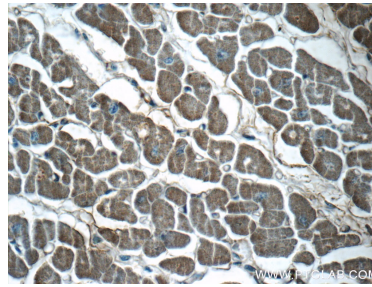
HEK-293 cells were subjected to SDS PAGE followed by western blot with 10702-1-AP (VAMP3/Cellubrevin antibody) at dilution of 1:1000 incubated at room temperature for 1.5 hours.



IP Result of anti-VAMP3/Cellubrevin (IP:10702-1-AP, 4ug; Detection:10702-1-AP 1:1000) with HEK-293 cells lysate 3000ug.



Immunohistochemical analysis of paraffin-embedded human heart tissue slide using 10702-1-AP (VAMP3/Cellubrevin antibody at dilution of 1:50) (under 10x lens).



Immunohistochemical analysis of paraffin-embedded human heart tissue slide using 10702-1-AP (VAMP3/Cellubrevin antibody at dilution of 1:50) (under 40x lens).