

À des fins de recherche uniquement

# Anticorps Polyclonal de lapin anti-NELFE



Numéro de catalogue: 10705-1-AP

Phare

16 Publications

## Informations de base

Numéro de catalogue:  
10705-1-AP

Taille:  
150ul, Concentration: 500 µg/ml by Nanodrop and 333 µg/ml by Bradford method using BSA as the standard;

Hôte:  
Lapin

Isotype:  
IgG

Immunogen Catalog Number:  
AG1186

Numéro d'acquisition GenBank:  
BC011600

Identification du gène (NCBI):  
7936

Nom complet:  
RD RNA binding protein

MW calculé  
37 kDa, 43 kDa

MW observés:  
43 kDa

Méthode de purification:  
Purification par affinité contre l'antigène

Dilutions recommandées:  
WB 1:2000-1:12000  
IP 0.5-4.0 ug for IP and 1:500-1:1000 for WB  
IHC 1:50-1:200  
IF 1:50-1:500

## Applications

Applications testées:  
IF, IHC, IP, WB, ELISA

Demandes citées:  
ChIP, IF, IHC, RIP, WB

Spécificité de l'espèce:  
Humain, rat, souris

Espèces citées:  
Humain, rat, souris

**Remarque-IHC: il est suggéré de démasquer l'antigène avec un tampon de TE buffer pH 9,0; (\*) À défaut, 'le démasquage de l'antigène peut être 'effectué avec un tampon citrate pH 6,0.**

Contrôles positifs:

WB : cellules HEK-293, cellules HeLa, tissu cérébral de rat, tissu cérébral de souris, tissu oculaire de souris, tissu placentaire de souris, tissu rénal de rat, tissu rénal de souris

IP : tissu cérébral de souris,

IHC : tissu de cancer de la prostate humain,

IF : cellules HeLa,

## Informations générales

RDBP, also named NELF-E and RD, belongs to the RRM NELF-E family. It is an essential component of the NELF complex which is a complex that negatively regulates the elongation of transcription by RNA polymerase II. The NELF complex, a complex acts via an association with the DSIF complex and causes transcriptional pausing, is counteracted by the P-TEFb kinase complex. RDBP was recently found implicated in RNA polymerase II pausing by association with Hsp90. Catalog# 10705-1-AP is a widely used rabbit polyclonal antibody obtained by immunizing animals with full-length RDBP of human origin.

## Publications notables

Autrice	Pubmed ID	Journal	Application
Bofeng Liu	33116310	Nature	IF
Jiayao Ou	34697434	Mucosal Immunol	WB
Sylvia C Hewitt	30332301	FASEB J	IHC, WB

## Stockage

Stockage:

Stocker à -20°C. Stable pendant un an après l'expédition.

Tampon de stockage:

PBS avec azoture de sodium à 0,02 % et glycérol à 50 % pH 7,3

L'aliquotage n'est pas nécessaire pour le stockage à -20C

\*\*\* Les 20ul contiennent 0,1% de BSA.

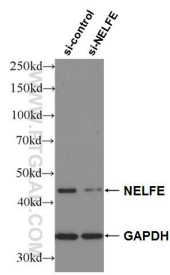
For technical support and original validation data for this product please contact:

T: 1 (888) 4PTGLAB (1-888-478-4522) (toll free in USA), or 1(312) 455-8498 (outside USA)

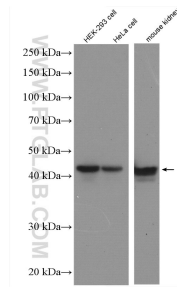
E: proteintech@ptglab.com  
W: ptglab.com

This product is exclusively available under Proteintech Group brand and is not available to purchase from any other manufacturer.

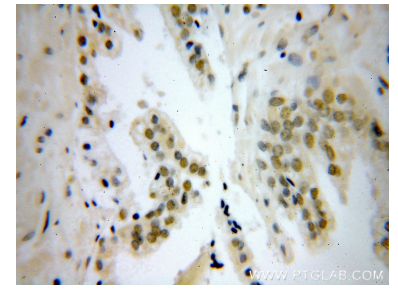
## Données de validation sélectionnées



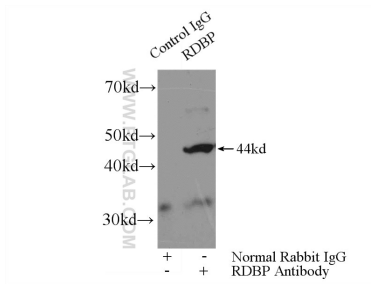
WB result of NELFE antibody (10705-1-AP; 1:60000; incubated at room temperature for 1.5 hours) with sh-Control and sh-NELFE transfected HEK-293 cells.



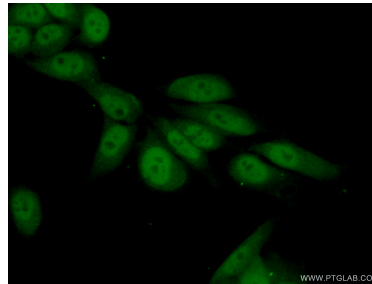
Various lysates were subjected to SDS PAGE followed by western blot with 10705-1-AP (NELFE antibody) at dilution of 1:6000 incubated at room temperature for 1.5 hours.



Immunohistochemical analysis of paraffin-embedded human prostate cancer using 10705-1-AP (NELFE antibody) at dilution of 1:100 (under 40x lens).



IP Result of anti-NELFE (IP:10705-1-AP, 4ug; Detection:10705-1-AP 1:800) with mouse brain tissue lysate 4680ug.



Immunofluorescent analysis of (10% Formaldehyde) fixed HeLa cells using 10705-1-AP (NELFE antibody) at dilution of 1:50 and Alexa Fluor 488-conjugated AffiniPure Goat Anti-Rabbit IgG(H+L).