

À des fins de recherche uniquement

# Anticorps Polyclonal de lapin anti-SIX1



Numéro de catalogue: 10709-1-AP

Phare

22 Publications

## Informations de base

Numéro de catalogue:  
10709-1-AP

Taille:  
150ul, Concentration: 500 µg/ml by  
Nanodrop and 307 µg/ml by Bradford  
method using BSA as the standard;

Hôte:  
Lapin

Isotype:  
IgG

Immunogen Catalog Number:  
AG1044

Numéro d'acquisition GenBank:  
BC008874

Identification du gène (NCBI):  
6495

Nom complet:  
SIX homeobox 1

MW calculé  
32 kDa

MW observés:  
32-35 kDa

Méthode de purification:  
Purification par affinité contre  
l'antigène

Dilutions recommandées:  
WB 1:500-1:1000  
IP 0.5-4.0 ug for IP and 1:500-1:2000  
for WB  
IF 1:20-1:200

## Applications

Applications testées:  
IF, IP, WB, ELISA

Demandes citées:  
IF, IHC, WB

Spécificité de l'espèce:  
Humain, souris

Espèces citées:  
Humain, rat, souris

Contrôles positifs:

WB : cellules A2780, cellules HEK-293, cellules HepG2,  
cellules LO2, cellules PC-3, cellules SKOV-3

IP : cellules HEK-293,

IF : cellules tumorales épithéliales,

## Informations générales

SIX1 belongs to SIX family that contains a divergent DNA-binding homeodomain and an upstream SIX domain, which may participate both in determining DNA-binding specificity and in mediating protein-protein interactions. It may be involved in limb tendon and ligament development, and specifically expressed in skeletal muscle. SIX1 plays a essential role in the development of numerous organs and shows littlt to no expression in most non-neoplastic adult tissue, yet is overexpression in a number of meoplasm where it increases cell proliferation and survival. The calculated molecular weight of SIX1 is 32kDa, but modified SIX1 is about 35 kDa.

## Publications notables

Autrice	Pubmed ID	Journal	Application
Zhaoming Li	30231237	Cell Physiol Biochem	WB
I Adrados	26500063	Oncogene	IF
Krithika Ramachandran	31589602	PLoS Biol	

## Stockage

Stockage:

Stocker à -20°C. Stable pendant un an après l'expédition.

Tampon de stockage:

PBS avec azoture de sodium à 0,02 % et glycérol à 50 % pH 7,3

L'aliquotage n'est pas nécessaire pour le stockage à -20C

\*\*\* Les 20ul contiennent 0,1% de BSA.

For technical support and original validation data for this product please contact:

T: 1 (888) 4PTGLAB (1-888-478-4522) (toll free  
in USA), or 1(312) 455-8498 (outside USA)

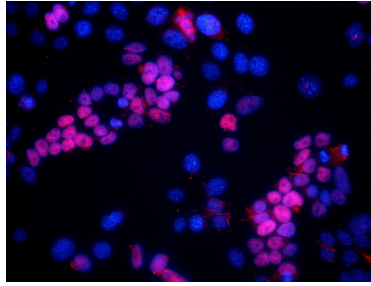
E: [proteintech@ptglab.com](mailto:proteintech@ptglab.com)  
W: [ptglab.com](http://ptglab.com)

This product is exclusively available under Proteintech Group brand and is not available to purchase from any other manufacturer.

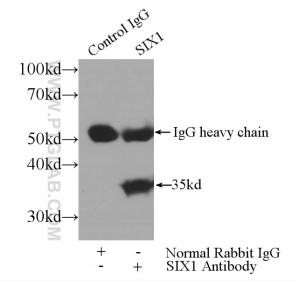
## Données de validation sélectionnées



A2780 cells were subjected to SDS PAGE followed by western blot with 10709-1-AP (SIX1 antibody) at dilution of 1:800 incubated at room temperature for 1.5 hours.



IF result of anti-SIX1 (1:50) in p53<sup>-/-</sup> mammary epithelial tumor cells. Blue: hoechst nuclear stain, Red: SIX1 stain the mesenchymal cell which have undergone EMT.



IP Result of anti-SIX1 (IP:10709-1-AP, 3ug; Detection:10709-1-AP 1:1000) with HEK-293 cells lysate 2560ug.