

À des fins de recherche uniquement

Anticorps Polyclonal de lapin anti-Cyclin H



Numéro de catalogue: 10718-1-AP

Informations de base

Numéro de catalogue:
10718-1-AP

Taille:
150ul, Concentration: 850 µg/ml by
Nanodrop and 400 µg/ml by Bradford
method using BSA as the standard;

Hôte:
Lapin

Isotype:
IgG

Immunogen Catalog Number:
AG1088

Numéro d'acquisition GenBank:
BC005280

Identification du gène (NCBI):

902
Nom complet:
cyclin H

MW calculé
38 kDa

MW observés:
38 kDa

Méthode de purification:
Purification par affinité contre
l'antigène

Dilutions recommandées:
WB 1:500-1:2000
IP 0.5-4.0 ug for IP and 1:500-1:2000
for WB
IHC 1:1000-1:4000
IF 1:20-1:200

Applications

Applications testées:
FC, IF, IHC, IP, WB, ELISA

Spécificité de l'espèce:
Humain, rat, souris

**Remarque-IHC: il est suggéré de démasquer
l'antigène avec un tampon de TE buffer pH
9.0; (*) À défaut, le démasquage de
l'antigène peut être effectué avec un
tampon citrate pH 6,0.**

Contrôles positifs:

WB : cellules A431, cellules A375, cellules HeLa,
cellules HuH-7, cellules Jurkat, cellules K-562, cellules
NIH/3T3, tissu cérébral de souris

IP : cellules HeLa,

IHC : tissu de cancer du sein humain,

IF : cellules SH-SY5Y,

Informations générales

Stockage

Stockage:
Stocker à -20°C. Stable pendant un an après l'expédition.
Tampon de stockage:
PBS avec azoture de sodium à 0,02 % et glycérol à 50 % pH 7,3
L'aliquotage n'est pas nécessaire pour le stockage à -20C

*** Les 20ul contiennent 0,1% de BSA.

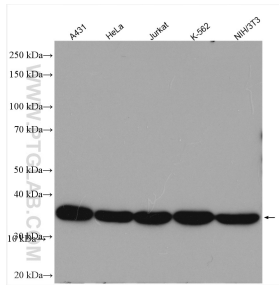
For technical support and original validation data for this product please contact:

T: 1 (888) 4PTGLAB (1-888-478-4522) (toll free
in USA), or 1(312) 455-8498 (outside USA)

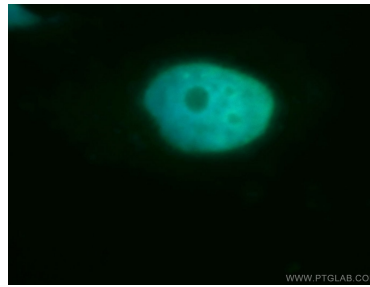
E: proteintech@ptglab.com
W: ptglab.com

This product is exclusively available under Proteintech Group brand and is not available to purchase from any other manufacturer.

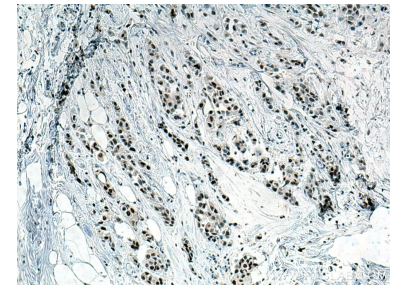
Données de validation sélectionnées



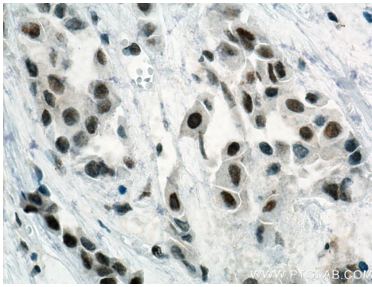
Various lysates were subjected to SDS PAGE followed by western blot with 10718-1-AP (Cyclin H antibody) at dilution of 1:1000 incubated at room temperature for 1.5 hours.



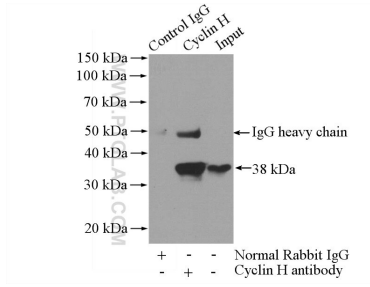
Immunofluorescent analysis of SH-SY5Y cells, using CCNH antibody 10718-1-AP at 1:50 dilution and FITC-labeled donkey anti-rabbit IgG (green). Blue pseudocolor = DAPI (fluorescent DNA dye).



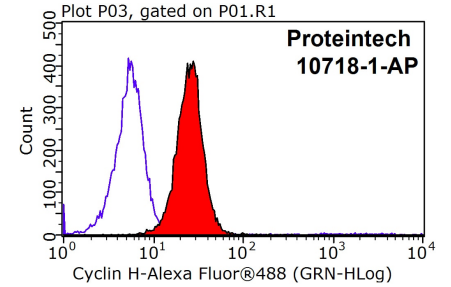
Immunohistochemical analysis of paraffin-embedded human breast cancer tissue slide using 10718-1-AP (Cyclin H antibody) at dilution of 1:2000 (under 10x lens). Heat mediated antigen retrieval with Tris-EDTA buffer (pH 9.0).



Immunohistochemical analysis of paraffin-embedded human breast cancer tissue slide using 10718-1-AP (Cyclin H antibody) at dilution of 1:2000 (under 40x lens). Heat mediated antigen retrieval with Tris-EDTA buffer (pH 9.0).



IP Result of anti-Cyclin H (IP:10718-1-AP, 4ug; Detection:10718-1-AP 1:1000) with HeLa cells lysate 1200ug.



1X10⁶ SH-SY5Y cells were stained with 0.2ug Cyclin H antibody (10718-1-AP, red) and control antibody (blue). Fixed with 90% MeOH blocked with 3% BSA (30 min). Alexa Fluor 488-conjugated AffiniPure Goat Anti-Rabbit IgG(H+L) with dilution 1:100.