

À des fins de recherche uniquement

# Anticorps Polyclonal de lapin anti-Cyclophilin A



Numéro de catalogue: 10720-1-AP

Phare

25 Publications

## Informations de base

Numéro de catalogue:  
10720-1-AP

Taille:  
150ul, Concentration: 800 µg/ml by Nanodrop and 320 µg/ml by Bradford method using BSA as the standard;

Hôte:  
Lapin

Isotype:  
IgG

Immunogen Catalog Number:  
AG1120

Numéro d'acquisition GenBank:  
BC005320

Identification du gène (NCBI):  
5478

Nom complet:  
peptidylprolyl isomerase A (cyclophilin A)

MW calculé:  
18 kDa

MW observés:  
18 kDa

Méthode de purification:  
Purification par affinité contre l'antigène

Dilutions recommandées:  
WB 1:2000-1:10000  
IHC 1:50-1:500  
IF 1:10-1:100

## Applications

Applications testées:  
FC, IF, IHC, WB, ELISA

Demandes citées:  
IF, IHC, WB

Spécificité de l'espèce:  
Humain, rat, souris

Espèces citées:  
Humain, rat, singe, souris

**Remarque-IHC: il est suggéré de démasquer l'antigène avec un tampon de TE buffer pH 9,0; (\*) À défaut, le démasquage de l'antigène peut être effectué avec un tampon citrate pH 6,0.**

Contrôles positifs:

WB : cellules HeLa, cellules C6, cellules HepG2, cellules K-562, cellules NIH/3T3, cellules Raji

IHC : tissu de cancer du côlon humain, tissu d'amygdalite humain, tissu placentaire humain, tissu testiculaire humain

IF : cellules HeLa,

## Informations générales

Cyclophilin A, also named as PPIA and Rotamase A, belongs to the cyclophilin-type PPIase family and PPIase A subfamily. PPIases accelerate the folding of proteins. It catalyzes the cis-trans isomerization of proline imidic peptide bonds in oligopeptides. PPIA forms a trimolecular complex with cyclophilin and calcineurins to inhibit calcineurin phosphatase activity. PPIA is incorporated into the virion of the type 1 human immunodeficiency virus (HIV-1) via a direct interaction with the capsid domain of the viral Gag polyprotein and is crucial for efficient viral replication.

## Publications notables

Autrice	Pubmed ID	Journal	Application
Shuyu Xin	36075565	Virol Sin	WB,IHC,IF
Hidenori Yasuda	34662453	FASEB J	IF
Yanqing Wang	31623908	J Endod	IF

## Stockage

Stockage:

Stocker à -20°C. Stable pendant un an après l'expédition.

Tampon de stockage:

PBS avec azoture de sodium à 0,02 % et glycérol à 50 % pH 7,3

L'aliquotage n'est pas nécessaire pour le stockage à -20C

\*\*\* Les 20ul contiennent 0,1% de BSA.

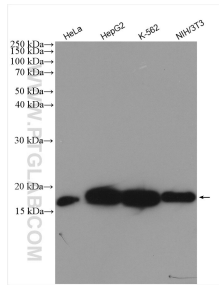
For technical support and original validation data for this product please contact:

T: 1 (888) 4PTGLAB (1-888-478-4522) (toll free in USA), or 1(312) 455-8498 (outside USA)

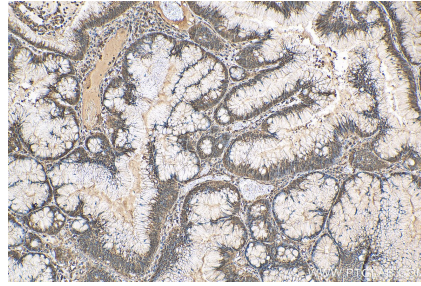
E: proteintech@ptglab.com  
W: ptglab.com

This product is exclusively available under Proteintech Group brand and is not available to purchase from any other manufacturer.

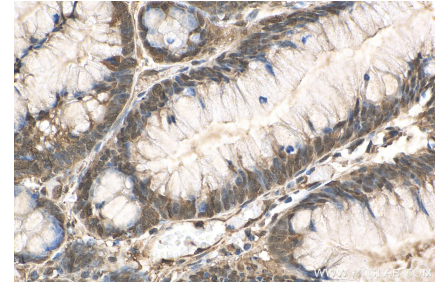
## Données de validation sélectionnées



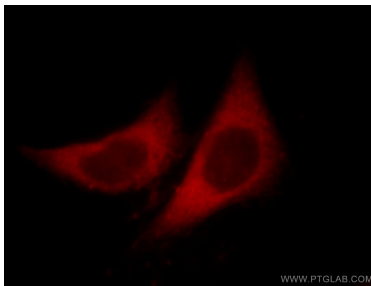
Various lysates were subjected to SDS PAGE followed by western blot with 10720-1-AP (Cyclophilin A antibody) at dilution of 1:6000 incubated at room temperature for 1.5 hours.



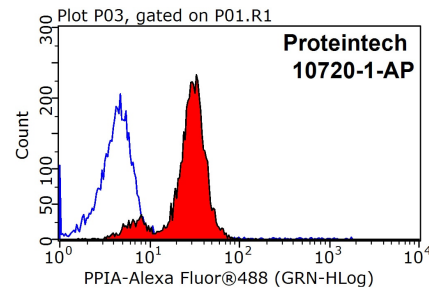
Immunohistochemical analysis of paraffin-embedded human colon cancer tissue slide using 10720-1-AP (Cyclophilin A antibody) at dilution of 1:200 (under 10x lens). Heat mediated antigen retrieval with Tris-EDTA buffer (pH 9.0).



Immunohistochemical analysis of paraffin-embedded human colon cancer tissue slide using 10720-1-AP (Cyclophilin A antibody) at dilution of 1:200 (under 40x lens). Heat mediated antigen retrieval with Tris-EDTA buffer (pH 9.0).



Immunofluorescent analysis of HepG2 cells, using PPIA antibody 10720-1-AP at 1:25 dilution and Rhodamine-labeled goat anti-rabbit IgG (red).



1x10<sup>6</sup> HeLa cells were stained with 0.2ug Cyclophilin A antibody (10720-1-AP, red) and control antibody (blue). Fixed with 90% MeOH blocked with 3% BSA (30 min). Alexa Fluor 488-conjugated AffiniPure Goat Anti-Rabbit IgG(H+L) with dilution 1:1000.