

À des fins de recherche uniquement

Anticorps Polyclonal de lapin anti-KU70, XRCC6



Numéro de catalogue: 10723-1-AP

Phare

24 Publications

Informations de base

Numéro de catalogue:
10723-1-AP

Taille:
150ul, Concentration: 240 µg/ml by Nanodrop and 173 µg/ml by Bradford method using BSA as the standard;

Hôte:
Lapin

Isotype:
IgG

Immunogen Catalog Number:
AG1043

Numéro d'acquisition GenBank:
BC008343

Identification du gène (NCBI):
2547

Nom complet:
X-ray repair complementing defective repair in Chinese hamster cells 6

MW calculé:
75 kDa

MW observés:
70 kDa

Méthode de purification:
Purification par affinité contre l'antigène

Dilutions recommandées:
WB 1:2000-1:12000
IP 0.5-4.0 ug for IP and 1:500-1:2000 for WB
IHC 1:50-1:500
IF 1:500-1:2000

Applications

Applications testées:
FC, IF, IHC, IP, WB, ELISA

Demandes citées:
CoIP, IF, IP, WB

Spécificité de l'espèce:
Humain, rat, souris

Espèces citées:
Humain, porc, rat

Remarque-IHC: il est suggéré de démasquer l'antigène avec un tampon de TE buffer pH 9,0; (*) À défaut, le démasquage de l'antigène peut être effectué avec un tampon citrate pH 6,0.

Contrôles positifs:

WB : cellules A431, cellules A549, cellules HeLa, cellules MCF-7, tissu de côlon de souris, tissu splénique de souris

IP : cellules HeLa,

IHC : tissu de cancer du côlon humain, tissu rénal de souris, tissu testiculaire de rat

IF : cellules HepG2,

Informations générales

X-ray repair cross-complementing protein 6 (XRCC6) gene encodes subunit p70 of the p70/p80 autoantigen which has a role in DNA repair or transposition. DNA helicase II complex binds preferentially to fork-like ends of double-stranded DNA in a cell cycle-dependent manner, which may be mediated by XRCC6. XRCC6/5 can form a heterodimer, which function as a regulatory subunit of the DNA-dependent protein kinase complex DNA-PK by increasing the affinity of the catalytic subunit PRKDC to DNA, and also it can stabilize broken DNA ends and bringing them together. Otherwise, XRCC5/6 heterodimer together with APEX1 can negatively regulate of transcription.

Publications notables

Autrice	Pubmed ID	Journal	Application
Xin Wen	36249018	Front Oncol	WB
Yingying Shi	34489398	Cell Death Dis	WB
L Hu	27593939	Oncogene	WB,IF

Stockage

Stockage:
Stocker à -20°C. Stable pendant un an après l'expédition.

Tampon de stockage:
PBS avec azoture de sodium à 0,02 % et glycérol à 50 % pH 7,3
L'aliquotage n'est pas nécessaire pour le stockage à -20C

*** Les 20ul contiennent 0,1% de BSA.

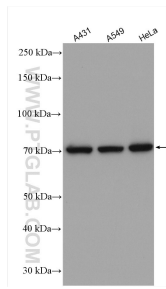
For technical support and original validation data for this product please contact:

T: 1 (888) 4PTGLAB (1-888-478-4522) (toll free in USA), or 1(312) 455-8498 (outside USA)

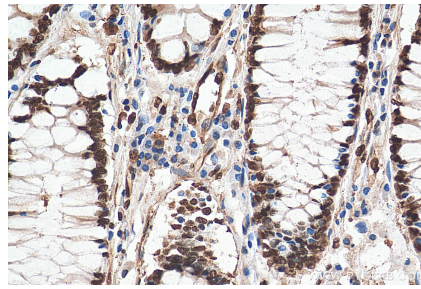
E: proteintech@ptglab.com
W: ptglab.com

This product is exclusively available under Proteintech Group brand and is not available to purchase from any other manufacturer.

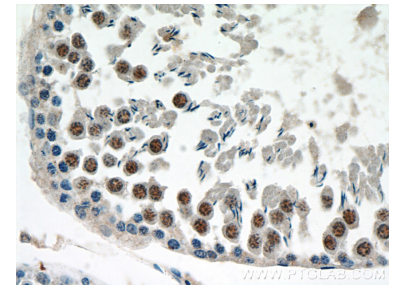
Données de validation sélectionnées



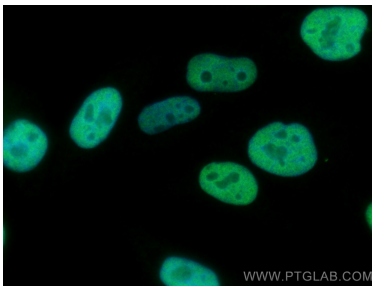
A431 cells were subjected to SDS PAGE followed by western blot with 10723-1-AP (KU70,XRCC6 antibody) at dilution of 1:6000 incubated at room temperature for 1.5 hours.



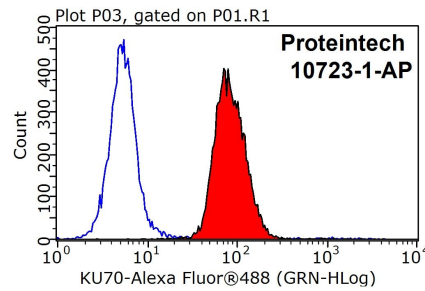
Immunohistochemical analysis of paraffin-embedded human colon cancer tissue slide using 10723-1-AP (KU70,XRCC6 antibody) at dilution of 1:200 (under 40x lens). Heat mediated antigen retrieval with Tris-EDTA buffer (pH 9.0).



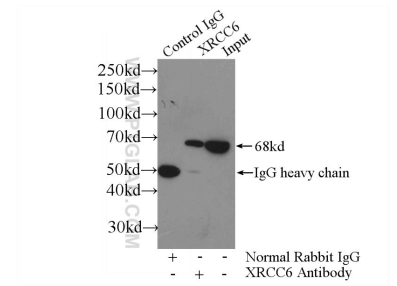
Immunohistochemical analysis of paraffin-embedded rat testis using 10723-1-AP (KU70,XRCC6 antibody) at dilution of 1:50 (under 40x lens).



Immunofluorescent analysis of (4% PFA) fixed HepG2 cells using KU70 antibody (10723-1-AP) at dilution of 1:1000 and CoraLite@488-Conjugated AffiniPure Goat Anti-Rabbit IgG(H+L).



1X10⁶ HepG2 cells were stained with 0.2ug KU70 antibody (10723-1-AP, red) and control antibody (blue). Fixed with 90% MeOH blocked with 3% BSA (30 min). Alexa Fluor 488-conjugated AffiniPure Goat Anti-Rabbit IgG(H+L) with dilution 1:1000.



IP Result of anti-KU70,XRCC6 (IP:10723-1-AP, 3ug; Detection:10723-1-AP 1:1000) with HeLa cells lysate 1600ug.