

À des fins de recherche uniquement

# Anticorps Polyclonal de lapin anti-NRAS



Numéro de catalogue: 10724-1-AP

Phare

27 Publications

## Informations de base

Numéro de catalogue:  
10724-1-AP

Taille:  
150ul, Concentration: 273 µg/ml by  
Bradford method using BSA as the  
standard;

Hôte:  
Lapin

Isotype:  
IgG

Immunogen Catalog Number:  
AG1081

Numéro d'acquisition GenBank:  
BC005219

Identification du gène (NCBI):  
4893

Nom complet:  
neuroblastoma RAS viral (v-ras)  
oncogene homolog

MW calculé

21 kDa

MW observés:

21 kDa

Méthode de purification:  
Purification par affinité contre  
l'antigène

Dilutions recommandées:

WB 1:500-1:2000

IHC 1:50-1:500

IF 1:50-1:500

## Applications

Applications testées:  
FC, IF, IHC, WB, ELISA

Demandes citées:  
IF, IHC, WB

Spécificité de l'espèce:  
Humain, rat, souris

Espèces citées:  
Humain, souris

**Remarque-IHC: il est suggéré de démasquer  
l'antigène avec un tampon de TE buffer pH  
9,0; (\*) A défaut, 'le démasquage de  
l'antigène peut être 'effectué avec un  
tampon citrate pH 6,0.**

Contrôles positifs:

WB : cellules A431, cellules A549, cellules C6, cellules  
HEK-293, cellules Jurkat, cellules MCF-7, cellules  
NIH/3T3

IHC : tissu pancréatique humain, tissu testiculaire  
humain

IF : cellules HeLa,

## Informations générales

NRAS, also named as N-ras and NRAS1, is neuroblastoma RAS viral (v-ras) oncogene homolog from the mammalian ras gene family and it is a member of the small GTPase superfamily. RAS proteins are involved in signal transduction pathways, and bind GDP/GTP and possess intrinsic GTPase activity. It is mapped on chromosome 1, and it is activated in HL60, a promyelocytic leukemia line. Defects in NRAS are a cause of juvenile myelomonocytic leukemia (JMML).

## Publications notables

Autrice	Pubmed ID	Journal	Application
Andrew M Waters	28951536	Sci Signal	WB
Akiya Tatsumi	36358254	Biology (Basel)	WB
Chen Liu	33046519	Clin Cancer Res	WB

## Stockage

Stockage:

Stocker à -20°C. Stable pendant un an après l'expédition.

Tampon de stockage:

PBS avec azoture de sodium à 0,02 % et glycérol à 50 % pH 7,3

L'aliquotage n'est pas nécessaire pour le stockage à -20C

\*\*\* Les 20ul contiennent 0,1% de BSA.

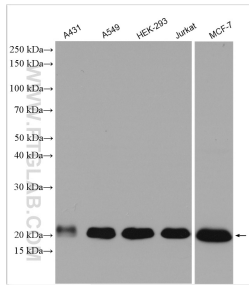
For technical support and original validation data for this product please contact:

T: 1 (888) 4PTGLAB (1-888-478-4522) (toll free  
in USA), or 1(312) 455-8498 (outside USA)

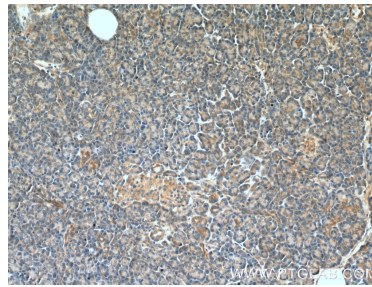
E: proteintech@ptglab.com  
W: ptglab.com

This product is exclusively available under Proteintech Group brand and is not available to purchase from any other manufacturer.

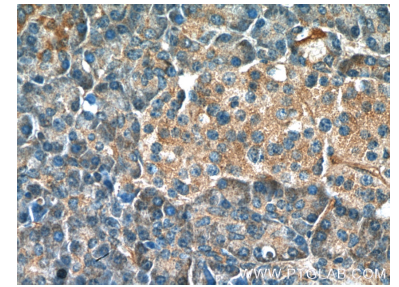
## Données de validation sélectionnées



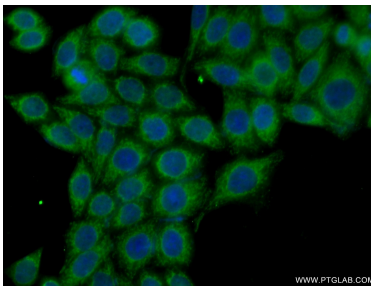
Various lysates were subjected to SDS PAGE followed by western blot with 10724-1-AP (NRAS antibody) at dilution of 1:1000 incubated at room temperature for 1.5 hours.



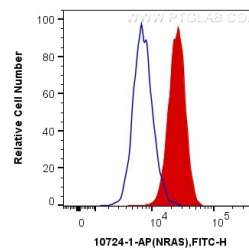
Immunohistochemical analysis of paraffin-embedded human pancreas tissue slide using 10724-1-AP (NRAS Antibody) at dilution of 1:200 (under 10x lens).



Immunohistochemical analysis of paraffin-embedded human pancreas tissue slide using 10724-1-AP (NRAS Antibody) at dilution of 1:200 (under 40x lens).



Immunofluorescent analysis of (-20°C Ethanol) fixed HeLa cells using 10724-1-AP (NRAS antibody) at dilution of 1:50 and Alexa Fluor 488-conjugated AffiniPure Goat Anti-Rabbit IgG(H+L).



1X10<sup>6</sup> HepG2 cells were intracellularly stained with 0.4 ug Anti-Human NRAS (10724-1-AP) and CoraLite@488-Conjugated AffiniPure Goat Anti-Rabbit IgG(H+L) at dilution 1:1000 (red), or 0.4 ug x. Cells were fixed with 4% PFA and permeabilized with Flow Cytometry Perm Buffer (PF00011-C).