

À des fins de recherche uniquement

# Anticorps Polyclonal de lapin anti-Ferritin light chain



Numéro de catalogue: 10727-1-AP

Phare

95 Publications

## Informations de base

Numéro de catalogue:

10727-1-AP

Taille:

150ul, Concentration: 800 µg/ml by Nanodrop;

Hôte:

Lapin

Isotype:

IgG

Immunogen Catalog Number:

AG1149

Numéro d'acquisition GenBank:

BC008439

Identification du gène (NCBI):

2512

Nom complet:

ferritin, light polypeptide

MW calculé

19 kDa

MW observés:

20-22 kDa

Méthode de purification:

Purification par affinité contre l'antigène

Dilutions recommandées:

WB 1:2000-1:10000

IP 0.5-4.0 ug for IP and 1:500-1:2000 for WB

IHC 1:50-1:500

IF 1:50-1:500

## Applications

Applications testées:

IF, IHC, IP, WB, ELISA

Demandes citées:

IF, IHC, WB

Spécificité de l'espèce:

Humain, rat, souris

Espèces citées:

Humain, rat, singe, souris

**Remarque-IHC: il est suggéré de démasquer l'antigène avec un tampon de TE buffer pH 9,0; (\*) À défaut, le démasquage de l'antigène peut être effectué avec un tampon citrate pH 6,0.**

Contrôles positifs:

WB : tissu hépatique de souris, tissu hépatique de rat, tissu ovarien de souris, tissu placentaire humain, tissu splénique de souris, tissu testiculaire de souris

IP : tissu hépatique de souris,

IHC : tissu hépatique humain, tissu de cancer du foie humain, tissu splénique de souris, tissu splénique humain

IF : cellules HepG2, cellules A549

## Informations générales

FTL belongs to the ferritin family. It stores iron in a soluble, non-toxic, readily available form. FTL is important for iron homeostasis. It plays a role in delivery of iron to cells. FTL mediates iron uptake in capsule cells of the developing kidney. Mutation of FTL will cause hereditary hyperferritinemia-cataract syndrome (HHCS) or neurodegeneration with brain iron accumulation type 3 (NBIA3). Ferritin light polypeptide (FTL) and ferritin heavy polypeptide (FTH1) were the main constituents the striatum and cerebellar cortex revealed.

## Publications notables

Autrice	Pubmed ID	Journal	Application
Lalit Pukhrambam Singh	35187384	JOJ Ophthalmol	WB
Hailong Gong	36164395	Oxid Med Cell Longev	WB
Xiaopeng Cai	36094079	ACS Appl Mater Interfaces	WB

## Stockage

Stockage:

Stocker à -20°C. Stable pendant un an après l'expédition.

Tampon de stockage:

PBS avec azotate de sodium à 0,02 % et glycérol à 50 % pH 7,3

L'aliquotage n'est pas nécessaire pour le stockage à -20C

\*\*\* Les 20ul contiennent 0,1% de BSA.

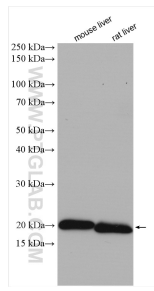
For technical support and original validation data for this product please contact:

T: 1 (888) 4PTGLAB (1-888-478-4522) (toll free in USA), or 1(312) 455-8498 (outside USA)

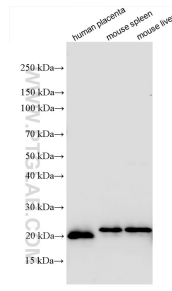
E: proteintech@ptglab.com  
W: ptglab.com

This product is exclusively available under Proteintech Group brand and is not available to purchase from any other manufacturer.

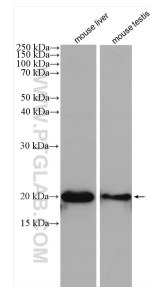
## Données de validation sélectionnées



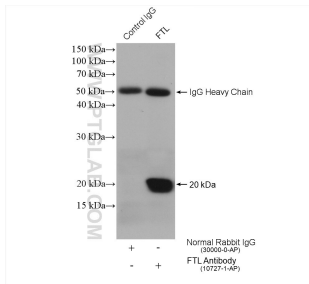
Various lysates were subjected to SDS PAGE followed by western blot with 10727-1-AP (Ferritin light chain antibody) at dilution of 1:5000 incubated at room temperature for 1.5 hours.



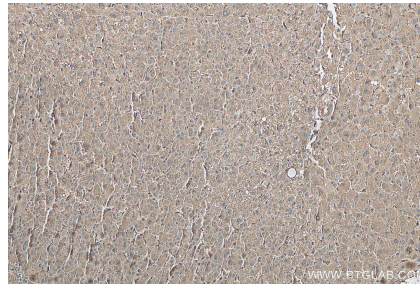
Various lysates were subjected to SDS PAGE followed by western blot with 10727-1-AP (Ferritin light chain antibody) at dilution of 1:1000 incubated at room temperature for 1.5 hours.



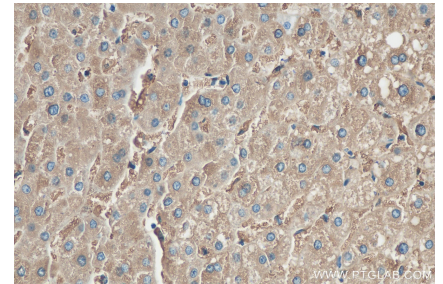
Various lysates were subjected to SDS PAGE followed by western blot with 10727-1-AP (Ferritin light chain antibody) at dilution of 1:1000 incubated at room temperature for 1.5 hours.



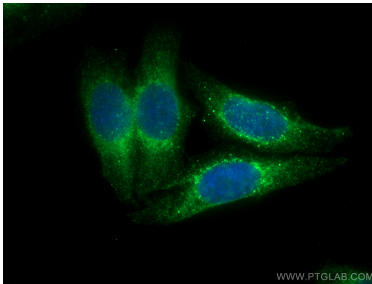
IP result of anti-Ferritin light chain (IP:10727-1-AP, 4ug; Detection:10727-1-AP 1:1000) with mouse liver tissue lysate 3040 ug.



Immunohistochemical analysis of paraffin-embedded human liver tissue slide using 10727-1-AP (Ferritin light chain antibody) at dilution of 1:200 (under 10x lens). Heat mediated antigen retrieval with Tris-EDTA buffer (pH 9.0).



Immunohistochemical analysis of paraffin-embedded human liver tissue slide using 10727-1-AP (Ferritin light chain antibody) at dilution of 1:200 (under 40x lens). Heat mediated antigen retrieval with Tris-EDTA buffer (pH 9.0).



Immunofluorescent analysis of (4% PFA) fixed HepG2 cells using Ferritin light chain antibody (10727-1-AP) at dilution of 1:200 and CoraLite®488-Conjugated AffiniPure Goat Anti-Rabbit IgG(H+L).