

À des fins de recherche uniquement

Anticorps Polyclonal de lapin anti-SERPBP1



Numéro de catalogue: 10729-1-AP

2 Publications

Informations de base

Numéro de catalogue: 10729-1-AP	Numéro d'acquisition GenBank: BC008045	Méthode de purification: Purification par affinité contre l'antigène
Taille: 150ul, Concentration: 400 µg/ml by Nanodrop and 267 µg/ml by Bradford method using BSA as the standard;	Identification du gène (NCBI): 26135	Dilutions recommandées: WB 1:500-1:2000 IHC 1:50-1:500 IF 1:50-1:500
Hôte: Lapin	Nom complet: SERPINE1 mRNA binding protein 1	
Isotype: IgG	MW calculé: 45 kDa	
Immunogen Catalog Number: AG1045	MW observés: 55 kDa	

Applications

Applications testées:

IF, IHC, WB, ELISA

Demandes citées:

WB

Spécificité de l'espèce:

Humain, rat, souris

Espèces citées:

Humain

Remarque-IHC: il est suggéré de démasquer l'antigène avec un tampon de TE buffer pH 9,0; (*) A défaut, 'le démasquage de l'antigène peut être 'effectué avec un tampon citrate pH 6,0.

Contrôles positifs:

WB : tissu testiculaire de souris,

IHC : tissu de cancer du poumon humain, tissu de cancer du côlon humain

IF : cellules U2OS,

Informations générales

The plasminogen activator system (PA) plays an important role in invasion and metastasis of solid tumors. The PA Inhibitor type 1 (PAI-1) is the main physiologic regulator of plasminogen activation. PAI-RBP1 (PAI-1 mRNA Binding Protein 1, also named SERBP1), is an RNA-binding protein containing an RG-rich domain and an RGG box domain that might be methylated by protein arginine N-methyltransferases (PRMTs). SERBP1 was identified as an interacting partner of a Tudor domain containing protein TDRD3, and can localize to cytoplasmic stress granules (SGs).

Publications notables

Autrice	Pubmed ID	Journal	Application
Miao Li	30247605	J Clin Endocrinol Metab	WB
Xiaolin Dong	36733342	Front Genet	WB

Stockage

Stockage:

Stocker à -20°C. Stable pendant un an après l'expédition.

Tampon de stockage:

PBS avec azoture de sodium à 0,02 % et glycérol à 50 % pH 7,3

L'aliquotage n'est pas nécessaire pour le stockage à -20C

*** Les 20ul contiennent 0,1% de BSA.

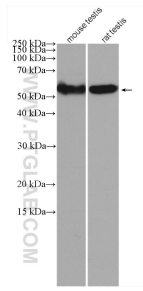
For technical support and original validation data for this product please contact:

T: 1 (888) 4PTGLAB (1-888-478-4522) (toll free in USA), or 1(312) 455-8498 (outside USA)

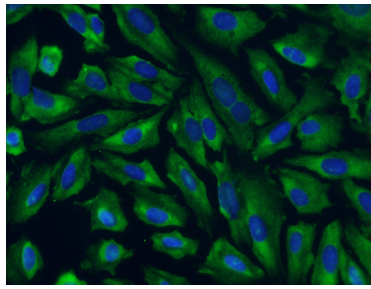
E: proteintech@ptglab.com
W: ptglab.com

This product is exclusively available under Proteintech Group brand and is not available to purchase from any other manufacturer.

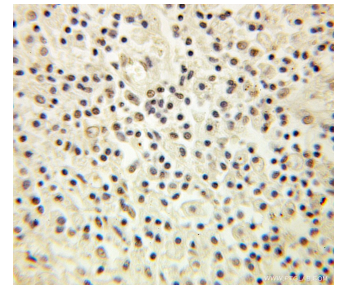
Données de validation sélectionnées



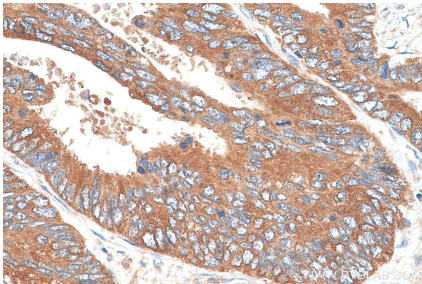
mouse testis tissue were subjected to SDS PAGE followed by western blot with 10729-1-AP (SERBP1 antibody) at dilution of 1:1000 incubated at room temperature for 1.5 hours.



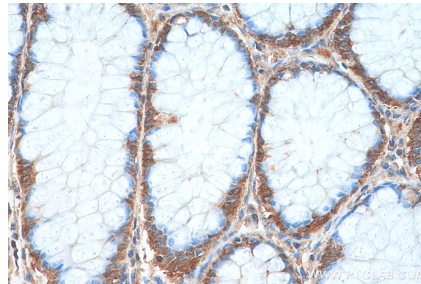
Immunofluorescent analysis of (4% PFA) fixed U2OS cells using 10729-1-AP (SERBP1 antibody) at dilution of 1:50 and Alexa Fluor 488-Conjugated AffiniPure Goat Anti-Rabbit IgG(H+L).



Immunohistochemical analysis of paraffin-embedded human lung cancer using 10729-1-AP (SERBP1 antibody) at dilution of 1:100 (under 10x lens).



Immunohistochemical analysis of paraffin-embedded human colon cancer tissue slide using 10729-1-AP (SERBP1 antibody) at dilution of 1:200 (under 40x lens). Heat mediated antigen retrieval with Tris-EDTA buffer (pH 9.0).



Immunohistochemical analysis of paraffin-embedded human colon cancer tissue slide using 10729-1-AP (SERBP1 antibody) at dilution of 1:200 (under 40x lens). Heat mediated antigen retrieval with Tris-EDTA buffer (pH 9.0).