

À des fins de recherche uniquement

Anticorps Polyclonal de lapin anti-CD59



Numéro de catalogue: 10742-1-AP

Phare

8 Publications

Informations de base

Numéro de catalogue: 10742-1-AP	Numéro d'acquisition GenBank: BC001506	Méthode de purification: Purification par affinité contre l'antigène
Taille: 150ul , Concentration: 300 µg/ml by Nanodrop;	Identification du gène (NCBI): 966	Dilutions recommandées: WB 1:500-1:2000 IHC 1:50-1:500 IF 1:10-1:100
Hôte: Lapin	Nom complet: CD59 molecule, complement regulatory protein	
Isotype: IgG	MW calculé 19 kDa	
Immunogen Catalog Number: AG1173	MW observés: 18-20 kDa	

Applications

Applications testées:
FC, IF, IHC, WB, ELISA

Demandes citées:
IF, IHC, WB

Spécificité de l'espèce:
Humain

Espèces citées:
Humain

Contrôles positifs:

WB : cellules BxPC-3, cellules HeLa, cellules HUVEC, tissu cérébral humain

IHC : tissu placentaire humain, tissu d'amygdalite humaine

IF : cellules BxPC-3,

Remarque-IHC: il est suggéré de démasquer l'antigène avec un tampon de TE buffer pH 9,0; (*) À défaut, 'le démasquage de l'antigène peut être 'effectué avec un tampon citrate pH 6,0.

Informations générales

CD59, also named as MIC11, MIN1, MIN2, MIN3, MSK21, MIRL, MACIF, HRF20 and 1F5 antigen, is a cell surface molecule glycoprotein with MW 18-25 kDa. It acts as a determinant of proximal-distal cell identity. CD59 acts by binding to the C8 and/or C9 complements of the assembling membrane attack complex (MAC), thereby preventing incorporation of the multiple copies of C9 required for complete formation of the osmolytic pore. It is involved in signal transduction for T-cell activation complexed to a protein tyrosine kinase.

Publications notables

Autrice	Pubmed ID	Journal	Application
S Nishiyama	29114578	Biochem Biophys Res	WB
Yingchun Zhang	31091357	Clin Exp Immunol	WB
Wang Yongjun Y	21464923	PLoS One	WB

Stockage

Stockage:

Stocker à -20°C. Stable pendant un an après l'expédition.

Tampon de stockage:

PBS avec azoture de sodium à 0,02 % et glycérol à 50 % pH 7,3

L'aliquotage n'est pas nécessaire pour le stockage à -20C

***** Les 20ul contiennent 0,1% de BSA.**

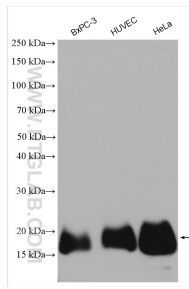
For technical support and original validation data for this product please contact:

T: 1 (888) 4PTGLAB (1-888-478-4522) (toll free in USA), or 1(312) 455-8498 (outside USA)

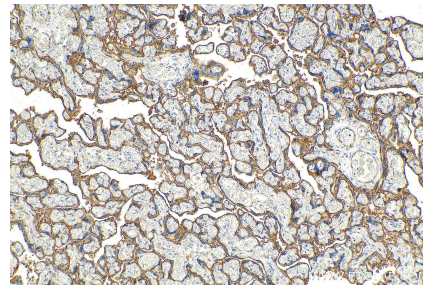
E: proteintech@ptglab.com
W: ptglab.com

This product is exclusively available under Proteintech Group brand and is not available to purchase from any other manufacturer.

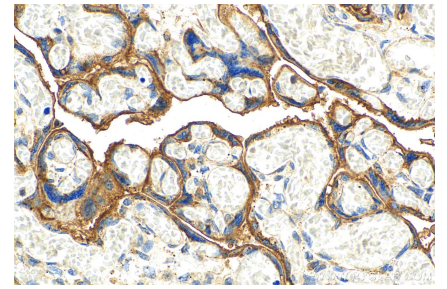
Données de validation sélectionnées



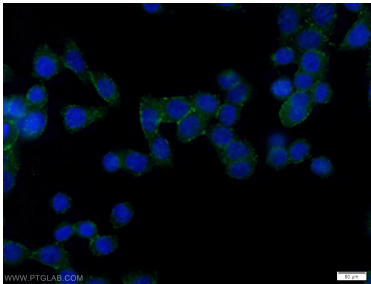
Various lysates were subjected to SDS PAGE followed by western blot with 10742-1-AP (CD59 antibody) at dilution of 1:1000 incubated at room temperature for 1.5 hours.



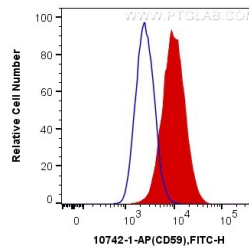
Immunohistochemical analysis of paraffin-embedded human placenta tissue slide using 10742-1-AP (CD59 antibody) at dilution of 1:200 (under 10x lens). Heat mediated antigen retrieval with Tris-EDTA buffer (pH 9.0).



Immunohistochemical analysis of paraffin-embedded human placenta tissue slide using 10742-1-AP (CD59 antibody) at dilution of 1:200 (under 40x lens). Heat mediated antigen retrieval with Tris-EDTA buffer (pH 9.0).



Immunofluorescent analysis of BxPC-3 cells using 10742-1-AP (CD59 antibody) at dilution of 1:25 and Alexa Fluor 488-conjugated AffiniPure Goat Anti-Rabbit IgG(H+L).



1×10^6 Jurkat cells were intracellularly stained with 0.4 μ g Anti-Human CD59 (10742-1-AP) and CoraLite[®]488-Conjugated AffiniPure Goat Anti-Rabbit IgG(H+L) at dilution 1:1000 (red), or 0.4 μ g x. Cells were fixed with 4% PFA and permeabilized with Flow Cytometry Perm Buffer (PF00011-C).