

À des fins de recherche uniquement

# Anticorps Polyclonal de lapin anti-NF- $\kappa$ B p65



Numéro de catalogue: 10745-1-AP

Phare

1077 Publications

## Informations de base

Numéro de catalogue:  
10745-1-AP

Taille:  
150ul, Concentration: 520  $\mu$ g/ml by  
Nanodrop;

Hôte:  
Lapin

Isotype:  
IgG

Immunogen Catalog Number:  
AG1199

Numéro d'acquisition GenBank:  
BC011603

Identification du gène (NCBI):  
5970

Nom complet:  
v-rel reticuloendotheliosis viral  
oncogene homolog A (avian)

MW calculé  
65 kDa

MW observés:  
65 kDa

Méthode de purification:  
Purification par affinité contre  
l'antigène

Dilutions recommandées:  
WB 1:1000-1:6000  
IP 0.5-4.0  $\mu$ g for IP and 1:500-1:2000  
for WB  
IHC 1:50-1:500  
IF 1:50-1:500

## Applications

Applications testées:  
FC, IF, IHC, IP, WB, ELISA

Demandes citées:  
ChIP, CoIP, IF, IHC, IP, WB

Spécificité de l'espèce:  
Humain, rat, souris

Espèces citées:  
Chèvre, Humain, Lapin, porc, poulet, rat, singe, souris,  
Hamster, fish

Contrôles positifs:

WB : cellules A431, cellules HEK-293, cellules HeLa,  
cellules Jurkat, cellules K-562, cellules MCF-7, cellules  
NIH/3T3, cellules Raji

IP : cellules HeLa,

IHC : tissu de cancer du sein humain, tissu de cancer du  
foie humain, tissu d'estomac humain

IF : cellules HepG2,

**Remarque-IHC: il est suggéré de démasquer  
l'antigène avec un tampon de TE buffer pH  
9,0; (\*) A défaut, 'le démasquage de  
l'antigène peut être 'effectué avec un  
tampon citrate pH 6,0.**

## Informations générales

Nuclear factor  $\kappa$  B (NF- $\kappa$ B) is a sequence-specific DNA-binding protein complex which regulates the expression of viral genomes, including the human immunodeficiency virus, and a variety of cellular genes, particularly those involved in immune and inflammatory responses. The members of the NF- $\kappa$ B family in mammalian cells include the proto-oncogene c-Rel, p50/p105 (NF $\kappa$ B1), p65 (RelA), p52/p100 (NF $\kappa$ B2), and RelB. All of these proteins share a conserved 300-amino acid region known as the Rel homology domain which is responsible for DNA binding, dimerization, and nuclear translocation of NF- $\kappa$ B. The p65 subunit is a major component of NF- $\kappa$ B complexes and is responsible for trans-activation. NF- $\kappa$ B heterodimeric p65-p50 and p65-c-Rel complexes are transcriptional activators. The NF- $\kappa$ B p65-p65 complex appears to be involved in invasion-mediated activation of IL-8 expression. The inhibitory effect of I $\kappa$ B upon NF- $\kappa$ B the cytoplasm is exerted primarily through the interaction with p65. p65 shows a weak DNA-binding site which could contribute directly to DNA binding in the NF- $\kappa$ B complex. It associates with chromatin at the NF- $\kappa$ B promoter region via association with DD $\chi$ 1. This antibody is a rabbit polyclonal antibody raised against residues near the N terminus of human RELA.

## Publications notables

Autrice	Pubmed ID	Journal	Application
Ji Xing	36230734	Cancers (Basel)	WB
Chang Liu	36230117	Foods	WB
Yanliang Wu	34601083	J Ethnopharmacol	WB

## Stockage

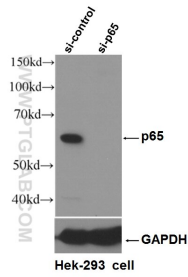
Stockage:  
Stocker à -20°C. Stable pendant un an après l'expédition.  
Tampon de stockage:  
PBS avec azoture de sodium à 0,02 % et glycérol à 50 % pH 7,3  
L'aliquotage n'est pas nécessaire pour le stockage à -20C

\*\*\* Les 20ul contiennent 0,1% de BSA.

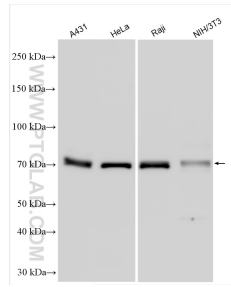
For technical support and original validation data for this product please contact:  
T: 1 (888) 4PTGLAB (1-888-478-4522) (toll free in USA), or 1(312) 455-8498 (outside USA)  
E: proteintech@ptglab.com  
W: ptglab.com

This product is exclusively available under Proteintech Group brand and is not available to purchase from any other manufacturer.

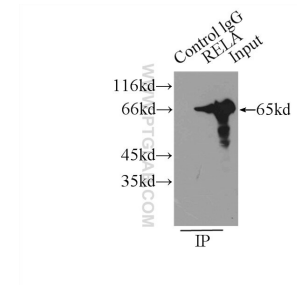
## Données de validation sélectionnées



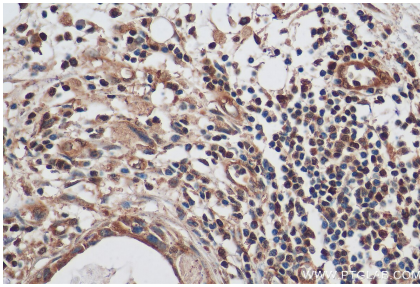
WB result of RELA, p65 antibody (10745-1-AP, 1:500) with si-Control and si-RELA, p65 transfected HeLa cells.



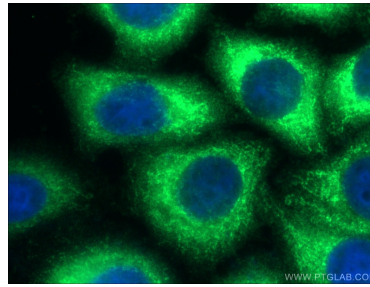
Various lysates were subjected to SDS PAGE followed by western blot with 10745-1-AP (NF- $\kappa$ B p65 antibody) at dilution of 1:3000 incubated at room temperature for 1.5 hours.



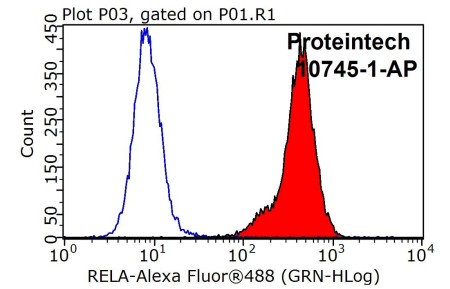
IP Result of anti-p65 (IP:10745-1-AP, 3 $\mu$ g; Detection:10745-1-AP 1:1000) with HeLa cells lysate 5000 $\mu$ g.



Immunohistochemical analysis of paraffin-embedded human breast cancer tissue slide using 10745-1-AP (NF- $\kappa$ B p65 antibody) at dilution of 1:200 (under  $\times$  lens). Heat mediated antigen retrieval with Tris-EDTA buffer (pH 9.0).



Immunofluorescent analysis of (-20°C Ethanol) fixed HepG2 cells using 10745-1-AP (p65; RELA antibody) at dilution of 1:100 and Alexa Fluor 488-conjugated AffiniPure Goat Anti-Rabbit IgG(H+L).



1 $\times$ 10<sup>6</sup> HeLa cells were stained with 0.2 $\mu$ g p65; RELA antibody (10745-1-AP, red) and control antibody (blue). Fixed with 90% MeOH blocked with 3% BSA (30 min). Alexa Fluor 488-conjugated AffiniPure Goat Anti-Rabbit IgG(H+L) with dilution 1:1000.