

À des fins de recherche uniquement

Anticorps Polyclonal de lapin anti-RHOA



Numéro de catalogue: 10749-1-AP

Phare

116 Publications

Informations de base

Numéro de catalogue: 10749-1-AP	Numéro d'acquisition GenBank: BC005976	Méthode de purification: Purification par affinité contre l'antigène
Taille: 150ul, Concentration: 600 µg/ml by Nanodrop;	Identification du gène (NCBI): 387	Dilutions recommandées: WB 1:500-1:2000 IF 1:50-1:500
Hôte: Lapin	Nom complet: ras homolog gene family, member A	
Isotype: IgG	MW calculé: 22 kDa	
Immunogen Catalog Number: AG1141	MW observés: 22 kDa	

Applications

Applications testées:

IF, WB, ELISA

Demandes citées:

IF, IHC, WB

Spécificité de l'espèce:

Humain, rat, souris

Espèces citées:

Humain, porc, rat, souris

Contrôles positifs:

WB : cellules HL-60, cellules HeLa, cellules HUVEC, cellules MCF-7, cellules NIH/3T3, cellules PC-12, tissu cérébral de rat, tissu cérébral de souris, tissu cérébral humain foetal

IF : cellules HeLa,

Informations générales

RhoA is a member of the Rho family of small GTPases, which cycle between inactive GDP-bound and active GTP-bound states and function as molecular switches in signal transduction cascades. Rho proteins promote reorganization of the actin cytoskeleton and regulate cell shape, attachment, and motility. Overexpression of RhoA is associated with tumor cell proliferation and metastasis. RhoA signalling is critical to many cellular processes including migration, mechanotransduction, and is often disrupted in carcinogenesis.

Publications notables

Autrice	Pubmed ID	Journal	Application
Lichan Mao	36247873	Anal Cell Pathol (Amst)	WB
Kai Cui	27678468	Asian J Androl	WB,IHC
Jing Wang	26409448	Tumour Biol	WB

Stockage

Stockage:

Stocker à -20°C. Stable pendant un an après l'expédition.

Tampon de stockage:

PBS avec azoture de sodium à 0,02 % et glycérol à 50 % pH 7,3

L'aliquotage n'est pas nécessaire pour le stockage à -20C

*** Les 20ul contiennent 0,1% de BSA.

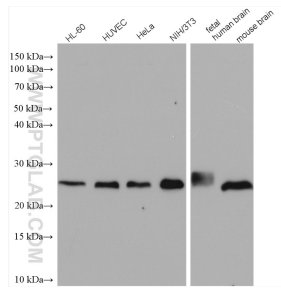
For technical support and original validation data for this product please contact:

T: 1 (888) 4PTGLAB (1-888-478-4522) (toll free in USA), or 1(312) 455-8498 (outside USA)

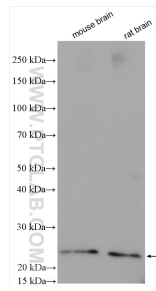
E: proteintech@ptglab.com
W: ptglab.com

This product is exclusively available under Proteintech Group brand and is not available to purchase from any other manufacturer.

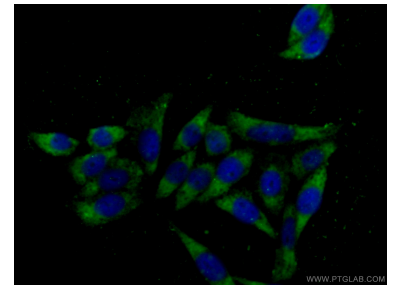
Données de validation sélectionnées



Various lysates were subjected to SDS PAGE followed by western blot with 10749-1-AP (RHOA antibody) at dilution of 1:1000 incubated at room temperature for 1.5 hours.



Various lysates were subjected to SDS PAGE followed by western blot with 10749-1-AP (RHOA antibody) at dilution of 1:5000 incubated at room temperature for 1.5 hours.



Immunofluorescent analysis of (-20°C Ethanol) fixed HeLa cells using 10749-1-AP (RHOA antibody) at dilution of 1:50 and CoraLite488-Conjugated AffiniPure Goat Anti-Rabbit IgG(H+L).