

À des fins de recherche uniquement

Anticorps Polyclonal de lapin anti-TIMP1



Numéro de catalogue: 10753-1-AP

35 Publications

Informations de base

Numéro de catalogue: 10753-1-AP	Numéro d'acquisition GenBank: BC007097	Méthode de purification: Purification par affinité contre l'antigène
Taille: 150ul , Concentration: 413 µg/ml by Bradford method using BSA as the standard;	Identification du gène (NCBI): 7076	Dilutions recommandées: IHC 1:50-1:500 IF 1:50-1:500
Hôte: Lapin	Nom complet: TIMP1 metalloproteinase inhibitor 1	
Isotype: IgG	MW calculé 23 kDa	
Immunogen Catalog Number: AG1146		

Applications

Applications testées: IF, IHC, ELISA	Contrôles positifs: IHC : tissu de cancer du sein humain, IF : cellules HepG2,
Demandes citées: IF, IHC	
Spécificité de l'espèce: Humain	
Espèces citées: Humain, rat, souris	
Remarque-IHC: il est suggéré de démasquer l'antigène avec un tampon de TE buffer pH 9,0; (*) A défaut, le démasquage de l'antigène peut être effectué avec un tampon citrate pH 6,0.	

Informations générales

Tissue Inhibitor of Metalloproteinases-1 (TIMP1) is a naturally occurring protein in the human organism regulating the activity of matrix metalloproteinases (MMPs). TIMP1 encodes a 931 base-pair mRNA and a 207 amino acid protein. Overexpression of TIMP1 can lead to a substantial increase of genes involved in proliferation, apoptosis and signal transduction. In addition, TIMP1 was found to decrease tumor cell sensitivity to multiple anticancer drugs by activation of downstream pathways and exhibited anti-apoptotic activity. Specifically, the TIMP1 could degrade cyclinB1 and activate the NF- κ B signaling pathway to protect breast cancer cells against chemotherapy-induced cell death.

Publications notables

Autrice	Pubmed ID	Journal	Application
Jen-Jie Lin	25222667	Mar Drugs	WB
Yuqing Mao	26378522	Int J Mol Sci	WB, IHC
Li Shang	25337715	PLoS One	IHC

Stockage

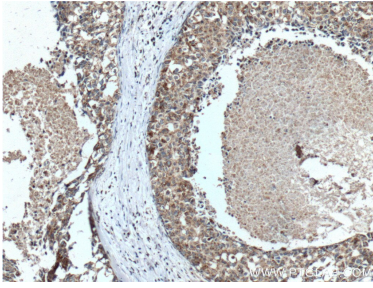
Stockage:
Stocker à -20°C. Stable pendant un an après l'expédition.
Tampon de stockage:
PBS avec azoture de sodium à 0,02 % et glycérol à 50 % pH 7,3
L'aliquotage n'est pas nécessaire pour le stockage à -20C

*** Les 20ul contiennent 0,1% de BSA.

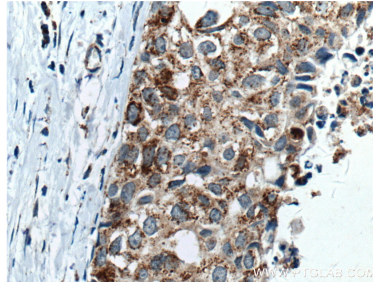
For technical support and original validation data for this product please contact:
T: 1 (888) 4PTGLAB (1-888-478-4522) (toll free in USA), or 1(312) 455-8498 (outside USA)
E: proteintech@ptglab.com
W: ptglab.com

This product is exclusively available under Proteintech Group brand and is not available to purchase from any other manufacturer.

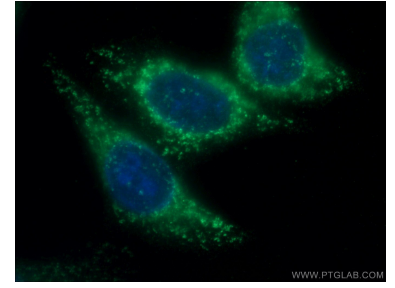
Données de validation sélectionnées



Immunohistochemical analysis of paraffin-embedded human breast cancer tissue slide using 10753-1-AP (TIMP1 Antibody) at dilution of 1:200 (under 10x lens). Heat mediated antigen retrieval with Tris-EDTA buffer (pH 9.0).



Immunohistochemical analysis of paraffin-embedded human breast cancer tissue slide using 10753-1-AP (TIMP1 Antibody) at dilution of 1:200 (under 40x lens). Heat mediated antigen retrieval with Tris-EDTA buffer (pH 9.0).



Immunofluorescent analysis of (-20°C Ethanol) fixed HepG2 cells using 10753-1-AP (TIMP1 antibody) at dilution of 1:50 and Alexa Fluor 488-conjugated AffiniPure Goat Anti-Rabbit IgG(H+L).