

À des fins de recherche uniquement

Anticorps Polyclonal de lapin anti-HADHA



Numéro de catalogue: 10758-1-AP

Phare

21 Publications

Informations de base

Numéro de catalogue:
10758-1-AP

Taille:
150ul, Concentration: 700 µg/ml by
Nanodrop;

Hôte:
Lapin

Isotype:
IgG

Immunogen Catalog Number:
AG1211

Numéro d'acquisition GenBank:
BC009235

Identification du gène (NCBI):
3030

Nom complet:
hydroxyacyl-Coenzyme A
dehydrogenase/3-ketoacyl-
Coenzyme A thiolase/enoyl-
Coenzyme A hydratase (trifunctional
protein), alpha subunit

MW calculé
83 kDa

MW observés:
70-79 kDa

Méthode de purification:
Purification par affinité contre
l'antigène

Dilutions recommandées:
WB 1:5000-1:50000
IP 0.5-4.0 ug for IP and 1:200-1:1000
for WB
IHC 1:50-1:500
IF 1:50-1:500

Applications

Applications testées:
FC, IF, IHC, IP, WB, ELISA

Demandes citées:
CoIP, IF, IHC, IP, WB

Spécificité de l'espèce:
Humain, rat, souris

Espèces citées:
Humain, rat, souris

Remarque-IHC: il est suggéré de démasquer l'antigène avec un tampon de TE buffer pH 9.0; (*) À défaut, 'le démasquage de l'antigène peut être 'effectué avec un tampon citrate pH 6,0.

Contrôles positifs:

WB : cellules Jurkat, cellules HEK-293, cellules HeLa, cellules NIH/3T3, tissu hépatique de rat, tissu hépatique de souris, tissu rénal de rat, tissu rénal de souris

IP : cellules HEK-293,

IHC : tissu cardiaque humain, tissu cardiaque de souris, tissu de cancer du côlon humain, tissu ovarien humain

IF : cellules HeLa, cellules HepG2

Informations générales

HADHA (Trifunctional enzyme subunit alpha, mitochondrial) is also named as HADH, 78 kDa gastrin-binding protein. It belongs to the enoyl-CoA hydratase/isomerase family in the N-terminal section and the 3-hydroxyacyl-CoA dehydrogenase family in the central section. It harbors the 3-hydroxyacyl-CoA dehydrogenase and enoyl-CoA hydratase activities. Defects in HADHA are a cause of trifunctional protein deficiency (TFP deficiency) and long-chain 3-hydroxyl-CoA dehydrogenase deficiency (LCHAD deficiency) and maternal acute fatty liver of pregnancy (AFLP).

Publications notables

| Autrice | Pubmed ID | Journal | Application |
|-----------------|-----------|-------------|-------------|
| Matthew Kerr | 32879143 | JCI Insight | CoIP |
| Dharendra Thapa | 30323061 | J Biol Chem | WB |
| Jingjing Zhang | 29207074 | Mol Med Rep | WB |

Stockage

Stockage:

Stocker à -20°C. Stable pendant un an après l'expédition.

Tampon de stockage:

PBS avec azoture de sodium à 0,02 % et glycérol à 50 % pH 7,3

L'aliquotage n'est pas nécessaire pour le stockage à -20C

*** Les 20ul contiennent 0,1% de BSA.

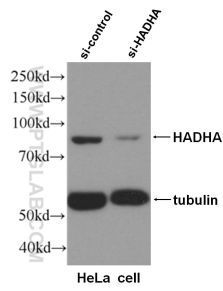
For technical support and original validation data for this product please contact:

T: 1 (888) 4PTGLAB (1-888-478-4522) (toll free in USA), or 1(312) 455-8498 (outside USA)

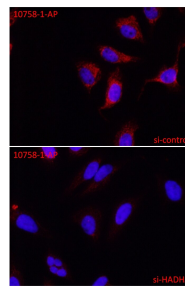
E: proteintech@ptglab.com
W: ptglab.com

This product is exclusively available under Proteintech Group brand and is not available to purchase from any other manufacturer.

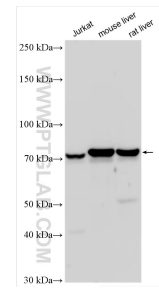
Données de validation sélectionnées



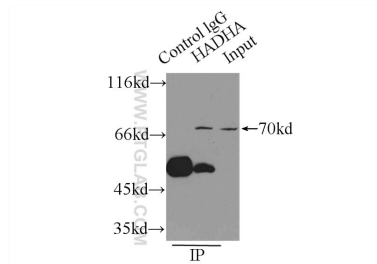
WB result of HADHA antibody (10758-1-AP, 1:4000) with si-control and si-HADHA transfected HeLa cells.



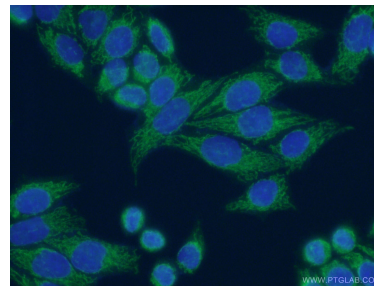
IF result of HADHA antibody (10758-1-AP, 1:50) with si-control and si-HADHA transfected HeLa cells.



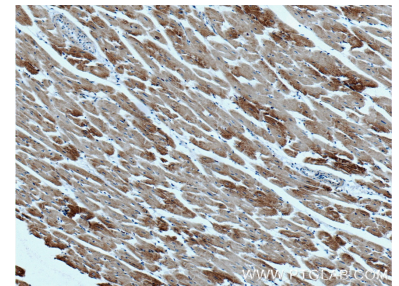
Various lysates were subjected to SDS PAGE followed by western blot with 10758-1-AP (HADHA antibody) at dilution of 1:10000 incubated at room temperature for 1.5 hours.



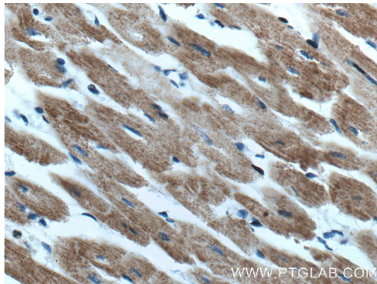
IP Result of anti-HADHA (IP:10758-1-AP, 4ug; Detection:10758-1-AP 1:200) with HEK-293 cells lysate 2500ug.



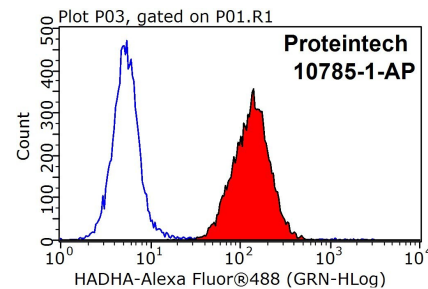
Immunofluorescent analysis of (4% PFA) fixed HeLa cells using 10758-1-AP (HADHA antibody) at dilution of 1:50 and Alexa Fluor 488-conjugated AffiniPure Goat Anti-Rabbit IgG(H+L).



Immunohistochemical analysis of paraffin-embedded human heart tissue slide using 10758-1-AP (HADHA antibody) at dilution of 1:200 (under 10x lens. Heat mediated antigen retrieval with Tris-EDTA buffer (pH 9.0).



Immunohistochemical analysis of paraffin-embedded human heart tissue slide using 10758-1-AP (HADHA antibody) at dilution of 1:200 (under 40x lens. Heat mediated antigen retrieval with Tris-EDTA buffer (pH 9.0).



1X10⁶ HepG2 cells were stained with 0.2ug HADHA antibody (10758-1-AP, red) and control antibody (blue). Fixed with 90% MeOH blocked with 3% BSA (30 min). Alexa Fluor 488-conjugated AffiniPure Goat Anti-Rabbit IgG(H+L) with dilution 1:1000.