

À des fins de recherche uniquement

Anticorps Polyclonal de lapin anti-CDK1



Numéro de catalogue: 10762-1-AP

Phare

50 Publications

Informations de base

Numéro de catalogue: 10762-1-AP	Numéro d'acquisition GenBank: BC014563	Méthode de purification: Purification par affinité contre l'antigène
Taille: 150ul , Concentration: 400 µg/ml by Nanodrop;	Identification du gène (NCBI): 983	Dilutions recommandées: WB 1:1000-1:4000 IHC 1:250-1:1000 IF 1:50-1:500
Hôte: Lapin	Nom complet: cell division cycle 2, G1 to S and G2 to M	
Isotype: IgG	MW calculé 25 kDa	
Immunogen Catalog Number: AG1183	MW observés: 34 kDa	

Applications

Applications testées:
FC, IF, IHC, WB, ELISA

Demandes citées:
IHC, WB

Spécificité de l'espèce:
Humain

Espèces citées:
Humain, porc, souris

Contrôles positifs:

WB : cellule C2C12, cellules C2C12, cellules HeLa, cellules Jurkat

IHC : tissu de cancer de la prostate humain, tissu de cancer du sein humain

IF : cellules HeLa,

Remarque-IHC: il est suggéré de démasquer l'antigène avec un tampon de TE buffer pH 9,0; (*) À défaut, le démasquage de l'antigène peut être effectué avec un tampon citrate pH 6,0.

Informations générales

CDK1, also named as CDC2, belongs to the protein kinase superfamily, CMGC Ser/Thr protein kinase family and CDC2/CDKX subfamily. CDK1 plays a key role in the control of the eukaryotic cell cycle. It is required in higher cells for entry into S-phase and mitosis. CDK1 is a catalytic subunit of the highly conserved protein kinase complex known as M-phase promoting factor (MPF), which is essential for G1/S and G2/M phase transitions of eukaryotic cell cycle. It is a component of the kinase complex that phosphorylates the repetitive C-terminus of RNA polymerase II. Mitotic cyclins stably associate with CDK1 and function as regulatory subunits. CDK1 has 2 isoforms produced by alternative splicing with the molecular mass of 34 kDa and 27 kDa. This antibody may have cross reaction with CDK2.

Publications notables

Autrice	Pubmed ID	Journal	Application
Zilu Zhang	34570444	Cancer Biol Med	WB
Qin Zhang	36083512	Mol Cell Biochem	WB
Huan Ma	33573708	Oncol Res	WB

Stockage

Stockage:

Stocker à -20°C. Stable pendant un an après l'expédition.

Tampon de stockage:

PBS avec azoture de sodium à 0,02 % et glycérol à 50 % pH 7,3

L'aliquoteage n'est pas nécessaire pour le stockage à -20C

*** Les 20ul contiennent 0,1% de BSA.

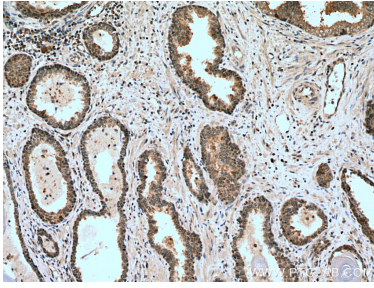
For technical support and original validation data for this product please contact:

T: 1 (888) 4PTGLAB (1-888-478-4522) (toll free in USA), or 1(312) 455-8498 (outside USA)

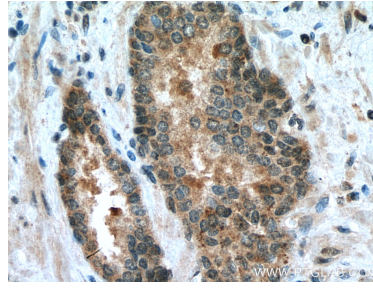
E: proteintech@ptglab.com
W: ptglab.com

This product is exclusively available under Proteintech Group brand and is not available to purchase from any other manufacturer.

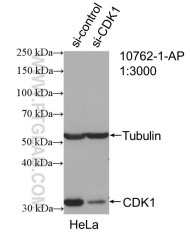
Données de validation sélectionnées



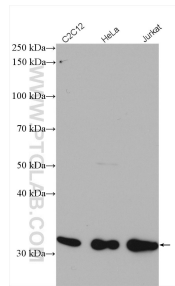
Immunohistochemical analysis of paraffin-embedded human prostate cancer tissue slide using 10762-1-AP (CDK1 antibody) at dilution of 1:500 (under 10x lens). Heat mediated antigen retrieval with Tris-EDTA buffer (pH 9.0).



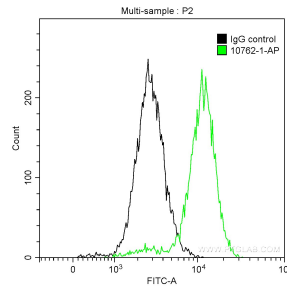
Immunohistochemical analysis of paraffin-embedded human prostate cancer tissue slide using 10762-1-AP (CDK1 antibody) at dilution of 1:500 (under 40x lens). Heat mediated antigen retrieval with Tris-EDTA buffer (pH 9.0).



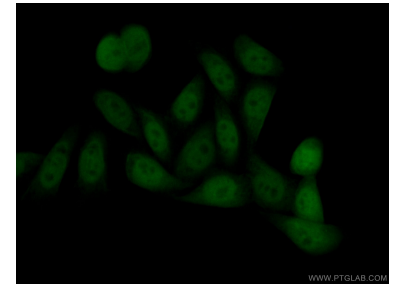
WB result of CDK1 antibody (10762-1-AP; 1:3000; incubated at room temperature for 1.5 hours) with sh-Control and sh-CDK1 transfected HeLa cells.



Various lysates were subjected to SDS PAGE followed by western blot with 10762-1-AP (CDK1 antibody) at dilution of 1:4000 incubated at room temperature for 1.5 hours.



1×10^6 HeLa cells were intracellularly stained with 0.2 ug Anti-Human CDK1 (10762-1-AP) and CoraLite[®]488-Conjugated AffiniPure Goat Anti-Rabbit IgG(H+L) at dilution 1:1000 (green), and 0.2 ug Control Antibody. Cells were fixed with 90% MeOH.



Immunofluorescent analysis of (4% PFA) fixed HeLa cells using 10762-1-AP (CDK1 antibody) at dilution of 1:50 and CoraLite488-Conjugated AffiniPure Goat Anti-Rabbit IgG(H+L).