

À des fins de recherche uniquement

Anticorps Polyclonal de lapin anti-eRF3a/GSPT1



Numéro de catalogue: 10763-1-AP

Phare

15 Publications

Informations de base

Numéro de catalogue:
10763-1-AP

Taille:
150ul, Concentration: 600 µg/ml by
Nanodrop;

Hôte:
Lapin

Isotype:
IgG

Immunogen Catalog Number:
AG1184

Numéro d'acquisition GenBank:
BC009503

Identification du gène (NCBI):
2935

Nom complet:
G1 to S phase transition 1

MW calculé
68 aa, 4 kDa

MW observés:
80-85 kDa

Méthode de purification:
Purification par affinité contre
l'antigène

Dilutions recommandées:
WB 1:2000-1:12000
IHC 1:50-1:500
IF 1:50-1:500

Applications

Applications testées:
IF, IHC, WB, ELISA

Demandes citées:
IF, IHC, WB

Spécificité de l'espèce:
Humain, rat, souris

Espèces citées:
Humain, souris

Contrôles positifs:

WB : cellules A549, cellules Caco-2, cellules HCT 116,
cellules HeLa, cellules HepG2, cellules MOLT-4

IHC : tissu de cancer du foie humain, tissu de cancer du
sein humain

IF : cellules MCF-7,

**Remarque-IHC: il est suggéré de démasquer
l'antigène avec un tampon de TE buffer pH
9,0; (*) À défaut, 'le démasquage de
l'antigène peut être 'effectué avec un
tampon citrate pH 6,0.**

Informations générales

The eukaryotic Release Factor 3 (eRF3) is a GTPase that associates with eRF1 in a complex that mediates translation termination. Eukaryotic release factor 3 (eRF3) has many functions in eukaryotic cells, such as controlling the regulation of the cell cycle at the G1 to S phase transition, and regulating protein synthesis as a GTP dependent stimulator of eRF1 in translation termination. It was also reported to play a key role as an initiator of the mRNA degradation machinery in the recycling of ribosomes in successive cycles of translation, and probably also in transcription regulation. eRF3a, also known as GSPT1, is one subunit of eRF3 (PMID:15917414,12923185). It involves in translation termination in response to the termination codons UAA, UAG and UGA and stimulates the activity of eRF1. eRF3a/GSPT1 exists some isoforms with MV 69 kDa and 56 kDa. Identification of a processed form of eRF3a/GSPT1 as a BIR3-binding protein-Using a GST-BIR3 fusion protein as an affinity reagent to purify new IAP binding proteins from extracts of human cells and mouse tissues, we previously isolated 3 proteins of molecular weights 23, 38 and 80 kDa. 80 kDa band confirmed that it is a processed form of the human GSPT1/eRF3a protein, lacking the first 69 residues (PMID: 12865429).

Publications notables

Autrice	Pubmed ID	Journal	Application
Cheng Zhang	31539861	Biomed Pharmacother	WB
Yuxin Ding	36386842	Front Genet	IHC
Yusuke Terui	25425115	Amino Acids	WB

Stockage

Stockage:

Stocker à -20°C. Stable pendant un an après l'expédition.

Tampon de stockage:

PBS avec azoture de sodium à 0,02 % et glycérol à 50 % pH 7,3

L'aliquoteage n'est pas nécessaire pour le stockage à -20C

*** Les 20ul contiennent 0,1% de BSA.

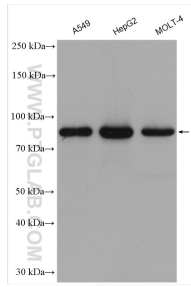
For technical support and original validation data for this product please contact:

T: 1 (888) 4PTGLAB (1-888-478-4522) (toll free
in USA), or 1(312) 455-8498 (outside USA)

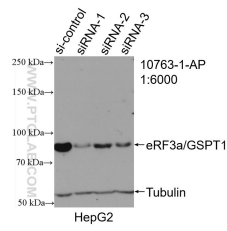
E: proteintech@ptglab.com
W: ptglab.com

This product is exclusively available under Proteintech Group brand and is not available to purchase from any other manufacturer.

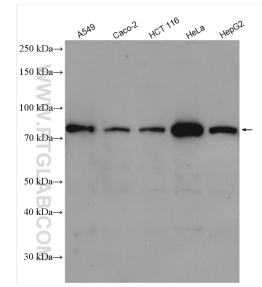
Données de validation sélectionnées



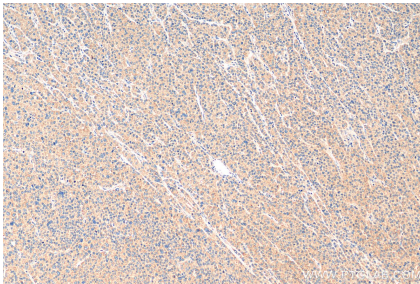
Various lysates were subjected to SDS PAGE followed by western blot with 10763-1-AP (eRF3a/GSPT1 antibody) at dilution of 1:6000 incubated at room temperature for 1.5 hours.



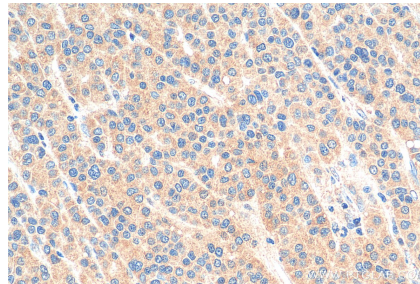
WB result of eRF3a/GSPT1 antibody (10763-1-AP; 1:6000; incubated at room temperature for 1.5 hours) with sh-Control and sh-eRF3a/GSPT1 transfected HepG2 cells.



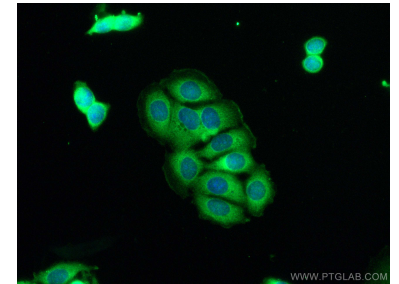
Various lysates were subjected to SDS PAGE followed by western blot with 10763-1-AP (eRF3a/GSPT1 antibody) at dilution of 1:5000 incubated at room temperature for 1.5 hours.



Immunohistochemical analysis of paraffin-embedded human liver cancer tissue slide using 10763-1-AP (eRF3a/GSPT1 antibody) at dilution of 1:200 (under 10x lens). Heat mediated antigen retrieval with Tris-EDTA buffer (pH 9.0).



Immunohistochemical analysis of paraffin-embedded human liver cancer tissue slide using 10763-1-AP (eRF3a/GSPT1 antibody) at dilution of 1:200 (under 40x lens). Heat mediated antigen retrieval with Tris-EDTA buffer (pH 9.0).



Immunofluorescent analysis of (-20°C Methanol) fixed MCF-7 cells using GSPT1 antibody (10763-1-AP) at dilution of 1:200 and CoraLite®488-Conjugated AffiniPure Goat Anti-Rabbit IgG(H+L).