

À des fins de recherche uniquement

# Anticorps Polyclonal de lapin anti-COG1



Numéro de catalogue: 10767-1-AP

## Informations de base

Numéro de catalogue: 10767-1-AP	Numéro d'acquisition GenBank: BC021985	Méthode de purification: Purification par affinité contre l'antigène
Taille: 150ul , Concentration: 550 µg/ml by Nanodrop;	Identification du gène (NCBI): 9382	Dilutions recommandées: WB 1:1000-1:8000 IHC 1:200-1:800
Hôte: Lapin	Nom complet: component of oligomeric golgi complex 1	
Isotype: IgG	MW calculé 109 kDa	
Immunogen Catalog Number: AG1203	MW observés: 109 kDa	

## Applications

Applications testées: IHC, WB, ELISA	Contrôles positifs: WB : cellules U-251, cellules PC-3, cellules U2OS IHC : tissu de tumeur ovarienne humain,
Spécificité de l'espèce: Humain	

**Remarque-IHC: il est suggéré de démasquer l'antigène avec un tampon de TE buffer pH 9,0; (\*) À défaut, 'le démasquage de l'antigène peut être effectué avec un tampon citrate pH 6,0.**

## Informations générales

COG1 is one protein of the COG complex which is a heterooctameric complex that regulates intraGolgi trafficking and the integrity of the Golgi compartment in eukaryotic cells (PMID: 16537452). It is reported that this protein is required for steps in the normal medial and trans-Golgi-associated processing of glycoconjugates and plays a role in the organization of the Golgi-localized complex. COG1 has a calculated molecular weight of 109 kDa.

## Stockage

Stockage:  
Stocker à -20°C. Stable pendant un an après l'expédition.  
Tampon de stockage:  
PBS avec azoture de sodium à 0,02 % et glycérol à 50 % pH 7,3  
L'aliquotage n'est pas nécessaire pour le stockage à -20C

**\*\*\* Les 20ul contiennent 0,1% de BSA.**

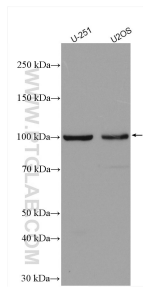
For technical support and original validation data for this product please contact:

T: 1 (888) 4PTGLAB (1-888-478-4522) (toll free in USA), or 1(312) 455-8498 (outside USA)

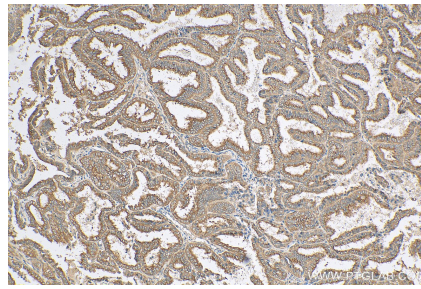
E: proteintech@ptglab.com  
W: ptglab.com

This product is exclusively available under Proteintech Group brand and is not available to purchase from any other manufacturer.

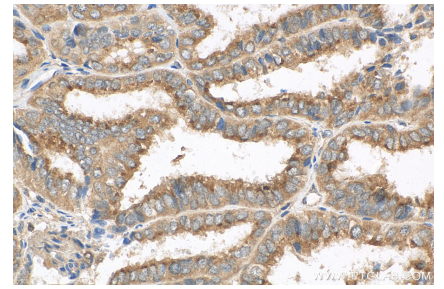
## Données de validation sélectionnées



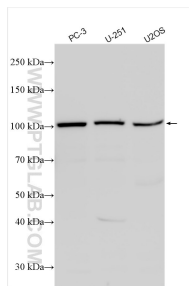
Various lysates were subjected to SDS PAGE followed by western blot with 10767-1-AP (COG1 antibody) at dilution of 1:4000 incubated at room temperature for 1.5 hours.



Immunohistochemical analysis of paraffin-embedded human ovary tumor tissue slide using 10767-1-AP (COG1 antibody) at dilution of 1:400 (under 10x lens). Heat mediated antigen retrieval with Tris-EDTA buffer (pH 9.0).



Immunohistochemical analysis of paraffin-embedded human ovary tumor tissue slide using 10767-1-AP (COG1 antibody) at dilution of 1:400 (under 40x lens). Heat mediated antigen retrieval with Tris-EDTA buffer (pH 9.0).



Various lysates were subjected to SDS PAGE followed by western blot with 10767-1-AP (COG1 antibody) at dilution of 1:4000 incubated at room temperature for 1.5 hours.