

À des fins de recherche uniquement

Anticorps Polyclonal de lapin anti-SFTPC



Numéro de catalogue: 10774-1-AP

31 Publications

Informations de base

Numéro de catalogue:	10774-1-AP	Numéro d'acquisition GenBank:	BC005913	Méthode de purification:	Purification par affinité contre l'antigène
Taille:	150ul, Concentration: 700 µg/ml by Nanodrop;	Identification du gène (NCBI):	6440	Dilutions recommandées:	WB 1:500-1:2000 IHC 1:500-1:2000 IF 1:50-1:500
Hôte:	Lapin	Nom complet:	surfactant protein C		
Isotype:	IgG	MW calculé	21 kDa		
Immunogen Catalog Number:	AG1159	MW observés:	21-25 kDa		

Applications

Applications testées:

IF, IHC, WB, ELISA

Demandes citées:

IF, IHC, WB

Spécificité de l'espèce:

Humain, rat, souris

Espèces citées:

Humain, rat, souris

Contrôles positifs:

WB : tissu pulmonaire de souris, tissu pulmonaire de rat

IHC : tissu pulmonaire humain,

IF : cellules A549,

Remarque-IHC: il est suggéré de démasquer l'antigène avec un tampon de TE buffer pH 9,0; (*) À défaut, 'le démasquage de l'antigène peut être effectué avec un tampon citrate pH 6,0.

Informations générales

SFTPC (surfactant protein C), also named as SFTP2, SP5 and SP-C, is a pulmonary surfactant associated proteins promote alveolar stability by lowering the surface tension at the air-liquid interface in the peripheral air spaces. Defects in SFTPC are the cause of pulmonary surfactant metabolism dysfunction type 2 (SMDP2). Genetic variations in SFTPC are associated with respiratory distress syndrome in premature infants (RDS). Two isoforms of the human protein are produced by alternative splicing. One previous study reported that SFTPC deletion was observed in NSCLC tissues, implying that SFTPC downregulation might be involved in the progression of lung cancer. (PMID: 35081981, PMID: 31379200)

Publications notables

Autrice	Pubmed ID	Journal	Application
Aibin Liu	32991738	J Pathol	IHC
Jian Huang	36189316	Front Immunol	IF, WB
Huifang Chen	34645797	Cell Death Dis	WB, IF

Stockage

Stockage:

Stocker à -20°C. Stable pendant un an après l'expédition.

Tampon de stockage:

PBS avec azoture de sodium à 0,02 % et glycérol à 50 % pH 7,3

L'aliquotage n'est pas nécessaire pour le stockage à -20C

*** Les 20ul contiennent 0,1% de BSA.

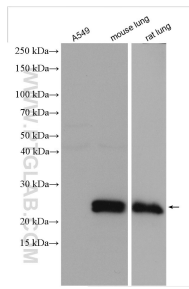
For technical support and original validation data for this product please contact:

T: 1 (888) 4PTGLAB (1-888-478-4522) (toll free in USA), or 1(312) 455-8498 (outside USA)

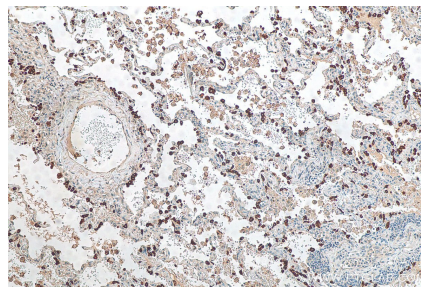
E: proteintech@ptglab.com
W: ptglab.com

This product is exclusively available under Proteintech Group brand and is not available to purchase from any other manufacturer.

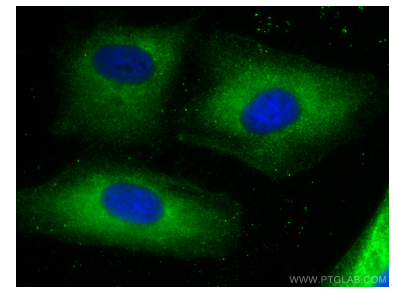
Données de validation sélectionnées



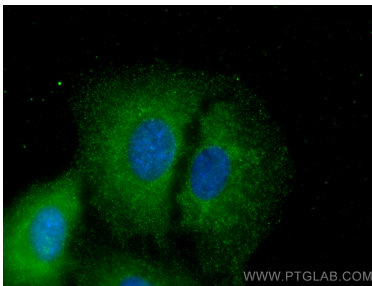
Various lysates were subjected to SDS PAGE followed by western blot with 10774-1-AP (SFTPC antibody) at dilution of 1:1000 incubated at room temperature for 1.5 hours.



Immunohistochemical analysis of paraffin-embedded human lung tissue slide using 10774-1-AP (SFTPC antibody) at dilution of 1:1000 (under 10x lens). Heat mediated antigen retrieval with Tris-EDTA buffer (pH 9.0).



Immunofluorescent analysis of (-20°C Methanol) fixed A549 cells using SFTPC antibody (10774-1-AP) at dilution of 1:400 and CoraLite@488-Conjugated AffiniPure Goat Anti-Rabbit IgG(H+L).



Immunofluorescent analysis of (-20°C Methanol) fixed A549 cells using SFTPC antibody (10774-1-AP) at dilution of 1:200 and CoraLite@488-Conjugated AffiniPure Goat Anti-Rabbit IgG(H+L).