

À des fins de recherche uniquement

Anticorps Polyclonal de lapin anti-DBH



Numéro de catalogue: 10777-1-AP

2 Publications

Informations de base

Numéro de catalogue:

10777-1-AP

Taille:

150ul , Concentration: 400 µg/ml by Nanodrop and 327 µg/ml by Bradford method using BSA as the standard;

Hôte:

Lapin

Isotype:

IgG

Immunogen Catalog Number:

AG1196

Numéro d'acquisition GenBank:

BC017174

Identification du gène (NCBI):

1621

Nom complet:

DBH

MW calculé

64.8 kDa

MW observés:

63 kDa

Méthode de purification:

Purification par affinité contre l'antigène

Dilutions recommandées:

WB 1:500-1:2000

IHC 1:50-1:500

IF 1:10-1:100

Applications

Applications testées:

FC, IF, IHC, WB, ELISA

Demandes citées:

WB

Spécificité de l'espèce:

Humain, souris

Espèces citées:

Humain, souris

Remarque-IHC: il est suggéré de démasquer l'antigène avec un tampon de TE buffer pH 9,0; (*) A défaut, 'le démasquage de l'antigène peut être 'effectué avec un tampon citrate pH 6,0.

Contrôles positifs:

WB : cellules HepG2, cellules HeLa, cellules SH-SY5Y

IHC : tissu cérébral de souris, tissu de cancer du foie humain

IF : cellules HepG2, cellules HeLa

Informations générales

DBH belongs to the copper type II ascorbate-dependent monooxygenase family and catalyzes the oxidative hydroxylation of DBH to norepinephrine. It is almost exclusively located in the adrenal medulla and the synaptic vesicles of postganglionic sympathetic neurons (PMID:11857564). The DBH is glycosylated (63--67 kDa) while still in the membrane (PMID:2325165) and it can form a dimer (PMID:8546710).

Publications notables

Autrice	Pubmed ID	Journal	Application
Yuan-Jun Qin	34571056	Peptides	WB
Shin Takasawa	35682548	Int J Mol Sci	WB

Stockage

Stockage:

Stocker à -20°C. Stable pendant un an après l'expédition.

Tampon de stockage:

PBS avec azoture de sodium à 0,02 % et glycérol à 50 % pH 7,3

L'aliquotage n'est pas nécessaire pour le stockage à -20C

*** Les 20ul contiennent 0,1% de BSA.

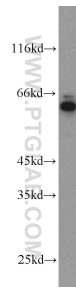
For technical support and original validation data for this product please contact:

T: 1 (888) 4PTGLAB (1-888-478-4522) (toll free in USA), or 1(312) 455-8498 (outside USA)

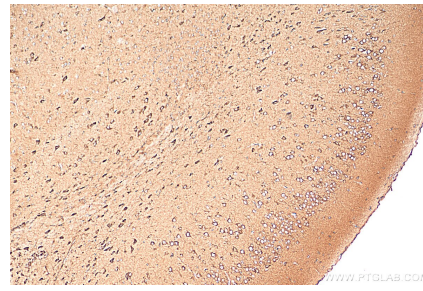
E: proteintech@ptglab.com
W: ptglab.com

This product is exclusively available under Proteintech Group brand and is not available to purchase from any other manufacturer.

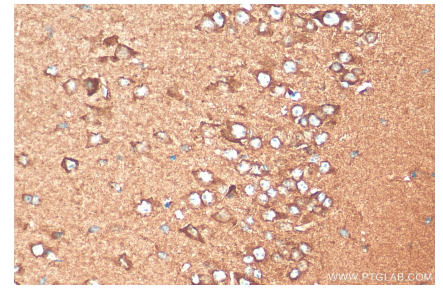
Données de validation sélectionnées



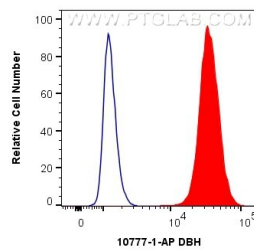
HepG2 cells were subjected to SDS PAGE followed by western blot with 10777-1-AP (DBH antibody) at dilution of 1:1000 incubated at room temperature for 1.5 hours.



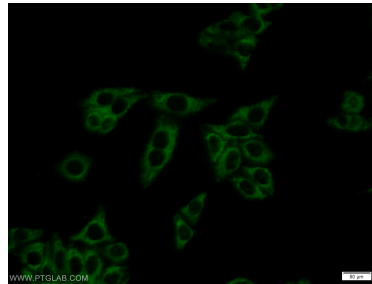
Immunohistochemical analysis of paraffin-embedded mouse brain tissue slide using 10777-1-AP (DBH antibody) at dilution of 1:200 (under 10x lens). Heat mediated antigen retrieval with Tris-EDTA buffer (pH 9.0).



Immunohistochemical analysis of paraffin-embedded mouse brain tissue slide using 10777-1-AP (DBH antibody) at dilution of 1:200 (under 40x lens). Heat mediated antigen retrieval with Tris-EDTA buffer (pH 9.0).



1×10^6 SH-SY5Y cells were intracellularly stained with 0.4 μ g Anti-Human DBH (10777-1-AP) and CoraLite@488-Conjugated AffiniPure Goat Anti-Rabbit IgG(H+L) at dilution 1:1000 (red), or 0.4 μ g Isotype Control. Cells were fixed with 4% PFA and permeabilized with Flow Cytometry Perm Buffer (PF00011-C).



Immunofluorescent analysis of HepG2 cells using 10777-1-AP (DBH antibody) at dilution of 1:25 and Alexa Fluor 488-conjugated AffiniPure Goat Anti-Rabbit IgG(H+L).