

À des fins de recherche uniquement

Anticorps Polyclonal de lapin anti-Bcl-XL



Numéro de catalogue: 10783-1-AP

Phare

160 Publications

Informations de base

Numéro de catalogue:
10783-1-AP

Taille:
150ul, Concentration: 450 µg/ml by
Nanodrop;

Hôte:
Lapin

Isotype:
IgG

Immunogen Catalog Number:
AG1232

Numéro d'acquisition GenBank:
BC019307

Identification du gène (NCBI):
598

Nom complet:
BCL2-like 1

MW calculé:
26 kDa

MW observés:
30 kDa

Méthode de purification:
Purification par affinité contre
l'antigène

Dilutions recommandées:
WB 1:2000-1:12000
IP 0.5-4.0 ug for IP and 1:500-1:1000
for WB
IHC 1:50-1:500
IF 1:10-1:100

Applications

Applications testées:
FC, IF, IHC, IP, WB, ELISA

Demandes citées:
ChIP, IF, IHC, IP, WB

Spécificité de l'espèce:
Humain, rat, souris

Espèces citées:
Chèvre, Humain, poisson-zèbre, porc, rat, souris,
Hamster

**Remarque-IHC: il est suggéré de démasquer
l'antigène avec un tampon de TE buffer pH
9,0; (*) À défaut, 'le démasquage de
l'antigène peut être 'effectué avec un
tampon citrate pH 6,0.**

Contrôles positifs:

WB : cellules A549, cellules C6, cellules HeLa, cellules
Jurkat, cellules K-562, cellules NIH/3T3, cellules Raji,
RAW264.7, tissu cérébral de rat, tissu placentaire de
souris, tissu placentaire humain

IP : cellules K-562,

IHC : tissu de cancer du poumon humain, tissu de côlon
humain

IF : cellules NIH/3T3,

Informations générales

BCL2L1 is a member of the BCL-2 protein family. BCL2L1 is expressed as three isoforms, Bcl-X(L), Bcl-X(s) and Bcl-X(beta), and is located at the outer mitochondrial membrane. The Bcl-X(L) isoform is a 233 amino acid protein, acting as an apoptotic inhibitor. Bcl-XL can form heterodimers with BAX, BAK or BCL2, and the heterodimerization with BAX does not seem to be required for anti-apoptotic activity. The Bcl-X(s) isoform is a shorter variant that is 178 amino acids in length and lacks a 63 amino acid region (amino acids 126-188), acting as an apoptotic activator. Bcl-X(beta) is a 227 amino acid protein. This antibody can recognize Bcl-XL, Bcl-X(s) and Bcl-X(Beta).

Publications notables

Autrice	Pubmed ID	Journal	Application
Yanhui Zhu	36183949	J Ethnopharmacol	IF
Xufeng Tao	25083618	Transplantation	WB
Yanling Lin	36139911	Antioxidants (Basel)	WB

Stockage

Stockage:
Stocker à -20°C. Stable pendant un an après l'expédition.

Tampon de stockage:
PBS avec azoture de sodium à 0,02 % et glycérol à 50 % pH 7,3
L'aliquotage n'est pas nécessaire pour le stockage à -20C

*** Les 20ul contiennent 0,1% de BSA.

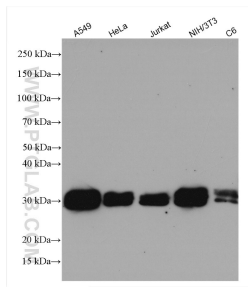
For technical support and original validation data for this product please contact:

T: 1 (888) 4PTGLAB (1-888-478-4522) (toll free
in USA), or 1(312) 455-8498 (outside USA)

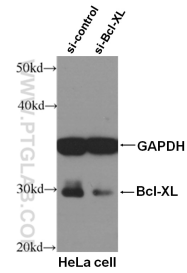
E: proteintech@ptglab.com
W: ptglab.com

This product is exclusively available under Proteintech Group brand and is not available to purchase from any other manufacturer.

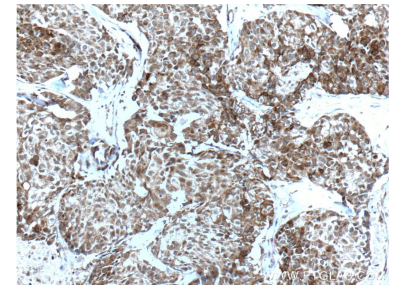
Données de validation sélectionnées



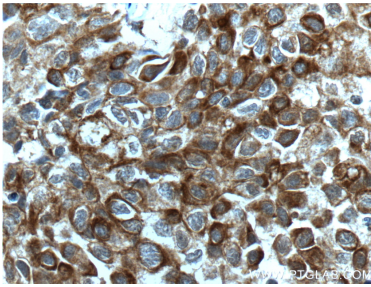
Various lysates were subjected to SDS PAGE followed by western blot with 10783-1-AP (Bcl-XL antibody) at dilution of 1:8000 incubated at room temperature for 1.5 hours.



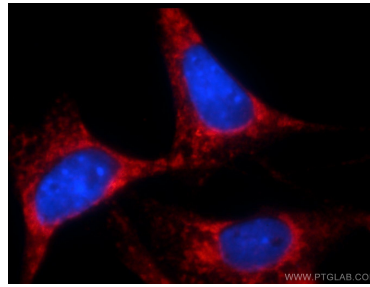
WB result of Bcl-XL antibody (10783-1-AP, 1:800) with si-Control and si-Bcl-XL transfected HeLa cells.



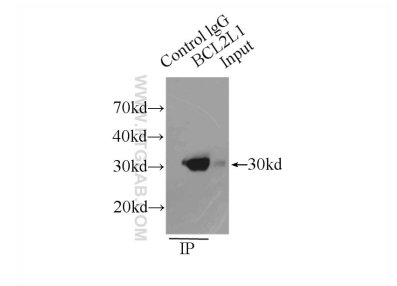
Immunohistochemical analysis of paraffin-embedded human lung cancer tissue slide using 10783-1-AP (Bcl-XL antibody) at dilution of 1:200 (under 10x lens. Heat mediated antigen retrieval with Tris-EDTA buffer (pH 9.0).



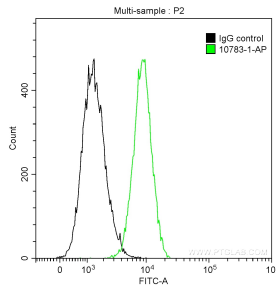
Immunohistochemical analysis of paraffin-embedded human lung cancer tissue slide using 10783-1-AP (Bcl-XL antibody) at dilution of 1:200 (under 40x lens. Heat mediated antigen retrieval with Tris-EDTA buffer (pH 9.0).



Immunofluorescent analysis of () fixed NIH/3T3 cells using 10783-1-AP (Bcl-XL antibody) at dilution of 1:25 and Rhodamine-Goat anti-Rabbit IgG.



IP result of anti-Bcl-XL (IP:10783-1-AP, 3ug; Detection:10783-1-AP 1:500) with K-562 cells lysate 8000 ug.



1×10^6 Jurkat cells were intracellularly stained with 0.2 ug Anti-Human Bcl-XL (10783-1-AP) and CoraLite®488-Conjugated AffiniPure Goat Anti-Rabbit IgG(H+L) at dilution 1:1000 (green), and 0.2 ug Control Antibody. Cells were fixed with 90% MeOH.