

À des fins de recherche uniquement

# Anticorps Polyclonal de lapin anti-RAB3C



Numéro de catalogue: 10788-1-AP

5 Publications

## Informations de base

Numéro de catalogue: 10788-1-AP	Numéro d'acquisition GenBank: BC013033	Méthode de purification: Purification par affinité contre l'antigène
Taille: 150ul, Concentration: 550 µg/ml by Nanodrop;	Identification du gène (NCBI): 115827	Dilutions recommandées: WB 1:2000-1:10000 IP 0.5-4.0 ug for IP and 1:200-1:1000 for WB IHC 1:50-1:500
Hôte: Lapin	Nom complet: RAB3C, member RAS oncogene family	
Isotype: IgG	MW calculé: 26 kDa	
Immunogen Catalog Number: AG1241	MW observés: 28 kDa	

## Applications

### Applications testées:

IHC, IP, WB, ELISA

### Demandes citées:

IF, IHC, WB

### Spécificité de l'espèce:

Humain, rat, souris

### Espèces citées:

Humain, souris

### Contrôles positifs:

WB : tissu cérébral de souris, tissu cérébral humain, tissu pulmonaire de souris, tissus cérébraux de rat

IP : tissu cérébral de souris,

IHC : tissu cérébral de souris,

**Remarque-IHC: il est suggéré de démasquer l'antigène avec un tampon de TE buffer pH 9,0; (\*) À défaut, le démasquage de l'antigène peut être effectué avec un tampon citrate pH 6,0.**

## Informations générales

Rab proteins are small molecular weight GTPases that control vesicular traffic in eukaryotic cells. A subset of Rab proteins, the Rab3 proteins (Rab3A, Rab3B, Rab3C, and Rab3D) are thought to play an important role in regulated exocytosis of vesicles. Although Rab3 proteins are highly homologous, displaying 77-85% amino acid identity with greatest variance evident within the N- and C-terminal regions, their subcellular targets and functional roles remain somewhat distinct between them. RT-PCR analysis indicated that human Rab3C was expressed in the human brain, placenta, and lung.

## Publications notables

Autrice	Pubmed ID	Journal	Application
Maha El Shahawy	28715412	PLoS Genet	IF
He Ma	36583008	Front Endocrinol (Lausanne)	WB
Wanxue Xu	31871774	Signal Transduct Target Ther	IHC

## Stockage

### Stockage:

Stocker à -20°C. Stable pendant un an après l'expédition.

### Tampon de stockage:

PBS avec azoture de sodium à 0,02 % et glycérol à 50 % pH 7,3

L'aliquotage n'est pas nécessaire pour le stockage à -20C

\*\*\* Les 20ul contiennent 0,1% de BSA.

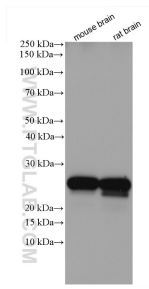
For technical support and original validation data for this product please contact:

T: 1 (888) 4PTGLAB (1-888-478-4522) (toll free in USA), or 1(312) 455-8498 (outside USA)

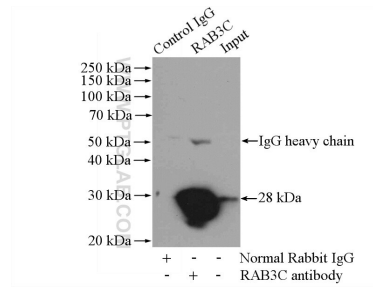
E: proteintech@ptglab.com  
W: ptglab.com

This product is exclusively available under Proteintech Group brand and is not available to purchase from any other manufacturer.

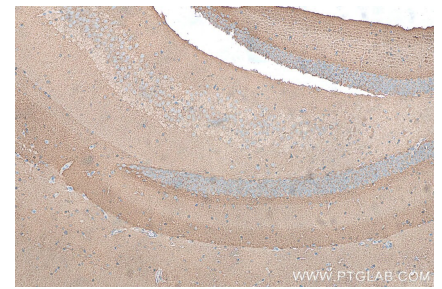
## Données de validation sélectionnées



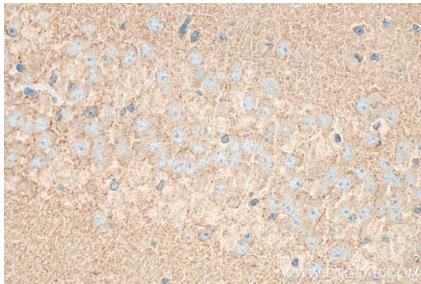
Various lysates were subjected to SDS PAGE followed by western blot with 10788-1-AP (RAB3C antibody) at dilution of 1:5000 incubated at room temperature for 1.5 hours.



IP Result of anti-RAB3C (IP:10788-1-AP, 4ug; Detection:10788-1-AP 1:300) with mouse brain tissue lysate 4000ug.



Immunohistochemical analysis of paraffin-embedded mouse brain tissue slide using 10788-1-AP (RAB3C antibody) at dilution of 1:200 (under 10x lens). Heat mediated antigen retrieval with Tris-EDTA buffer (pH 9.0).



Immunohistochemical analysis of paraffin-embedded mouse brain tissue slide using 10788-1-AP (RAB3C antibody) at dilution of 1:200 (under 40x lens). Heat mediated antigen retrieval with Tris-EDTA buffer (pH 9.0).