

À des fins de recherche uniquement

Anticorps Polyclonal de lapin anti-SLC25A13



Numéro de catalogue: 10789-1-AP

Informations de base

Numéro de catalogue:
10789-1-AP

Taille:
150ul, Concentration: 500 µg/ml by
Nanodrop and 300 µg/ml by Bradford
method using BSA as the standard;

Hôte:
Lapin

Isotype:
IgG

Immunogen Catalog Number:
AG1242

Numéro d'acquisition GenBank:
BC006566

Identification du gène (NCBI):
10165

Nom complet:
solute carrier family 25, member 13
(citrin)

MW calculé
74 kDa

MW observés:
60-63 kDa

Méthode de purification:
Purification par affinité contre
l'antigène

Dilutions recommandées:
WB 1:500-1:2400
IP 0.5-4.0 ug for IP and 1:500-1:2000
for WB
IHC 1:50-1:500

Applications

Applications testées:
IHC, IP, WB, ELISA

Spécificité de l'espèce:
Humain, rat, souris

**Remarque-IHC: il est suggéré de démasquer
l'antigène avec un tampon de TE buffer pH
9.0; (*) À défaut, le démasquage de
l'antigène peut être effectué avec un
tampon citrate pH 6,0.**

Contrôles positifs:

WB : tissu rénal de souris, cellules A431, cellules HEK-
293, cellules Raji, tissu hépatique de souris

IP : tissu rénal de souris,

IHC : tissu de cancer du côlon humain,

Informations générales

SLC25A13, also known as citrin, has been identified as a mitochondrial aspartate-glutamate carrier protein and may be implicated in metabolic compartmentation. It consists of 675 amino acid residues and harbors four EF-hands and six mitochondrial transmembranous (TM) spanners. Mutations in SLC25A13 gene cause adult-onset type II citrullinemia (CTLN2) and neonatal intrahepatic cholestasis (NICCD). The complete deletion or cleaved SLA25A13 proteins have been reported in patients with SLC25A13 mutation.

Stockage

Stockage:

Stocker à -20°C. Stable pendant un an après l'expédition.

Tampon de stockage:

PBS avec azoture de sodium à 0,02 % et glycérol à 50 % pH 7,3

L'aliquotage n'est pas nécessaire pour le stockage à -20C

*** Les 20ul contiennent 0,1% de BSA.

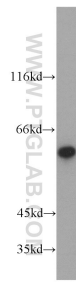
For technical support and original validation data for this product please contact:

T: 1 (888) 4PTGLAB (1-888-478-4522) (toll free
in USA), or 1(312) 455-8498 (outside USA)

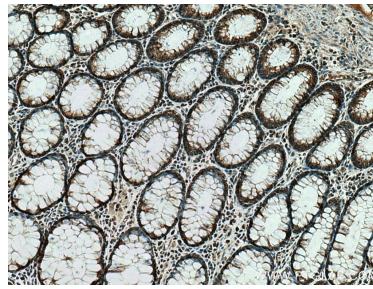
E: proteintech@ptglab.com
W: ptglab.com

This product is exclusively available under Proteintech Group brand and is not available to purchase from any other manufacturer.

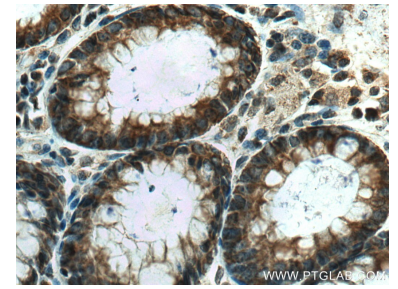
Données de validation sélectionnées



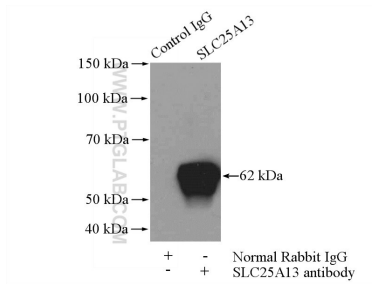
mouse kidney tissue were subjected to SDS PAGE followed by western blot with 10789-1-AP (SLC25A13 antibody) at dilution of 1:1200 incubated at room temperature for 1.5 hours.



Immunohistochemical analysis of paraffin-embedded human colon cancer tissue slide using 10789-1-AP (SLC25A13 antibody) at dilution of 1:200 (under 10x lens). Heat mediated antigen retrieval with Tris-EDTA buffer (pH 9.0).



Immunohistochemical analysis of paraffin-embedded human colon cancer tissue slide using 10789-1-AP (SLC25A13 antibody) at dilution of 1:200 (under 40x lens). Heat mediated antigen retrieval with Tris-EDTA buffer (pH 9.0).



IP Result of anti-SLC25A13 (IP:10789-1-AP, 4ug; Detection:10789-1-AP 1:1000) with mouse kidney tissue lysate 4000ug.