

À des fins de recherche uniquement

# Anticorps Polyclonal de lapin anti-ARF1



Numéro de catalogue: 10790-1-AP

Phare

17 Publications

## Informations de base

Numéro de catalogue:  
10790-1-AP

Taille:  
150ul, Concentration: 350 µg/ml by Nanodrop and 247 µg/ml by Bradford method using BSA as the standard;

Hôte:  
Lapin

Isotype:  
IgG

Immunogen Catalog Number:  
AG1244

Numéro d'acquisition GenBank:  
BC009247

Identification du gène (NCBI):  
375

Nom complet:  
ADP-ribosylation factor 1

MW calculé  
21 kDa

MW observés:  
18-21 kDa

Méthode de purification:  
Purification par affinité contre l'antigène

Dilutions recommandées:  
WB 1:1000-1:4000  
IHC 1:50-1:500  
IF 1:50-1:500

## Applications

Applications testées:  
IF, IHC, WB, ELISA

Demandes citées:  
CoIP, IF, IHC, IP, WB

Spécificité de l'espèce:  
Humain, rat, singe, souris

Espèces citées:  
Humain, rat, souris

**Remarque-IHC: il est suggéré de démasquer l'antigène avec un tampon de TE buffer pH 9,0; (\*) A défaut, le démasquage de l'antigène peut être effectué avec un tampon citrate pH 6,0.**

Contrôles positifs:

WB : cellules HeLa, cellules COS-7, cellules HEK-293, tissu cérébral de rat, tissu cérébral de souris

IHC : tissu de cancer du sein humain, tissu de cancer de la prostate humaine, tissu de cancer du côlon humain

IF : cellules HeLa,

## Informations générales

ADP-ribosylation factors (ARFs) are members of the ARF family of GTP-binding proteins of the Ras superfamily, with 20 kDa protein size. ARFs bind and regulate GTP/GDP cycle by alternating between the active GTP-bound and inactive GDP-bound conformations. ARF family proteins are essential and ubiquitous in eukaryotes. Six highly conserved members of the family have been identified in mammalian cells. They function in vesicular traffic and actin remodelling and other bioprocesses in cells. The ARF1 protein is localized to the Golgi apparatus and has a central role in intra-Golgi transport. It mainly functions in coat recruitment. (PMID: 7759471, PMID: 16042562). This antibody can bind ARFs for the close sequences.

## Publications notables

Autrice	Pubmed ID	Journal	Application
Xihua Yue	34493279	BMC Biol	WB
Bingying Xu	36229297	Fertil Steril	WB
Hui-Fang Hu	36396045	J Adv Res	WB, CoIP

## Stockage

Stockage:

Stocker à -20°C. Stable pendant un an après l'expédition.

Tampon de stockage:

PBS avec azoture de sodium à 0,02 % et glycérol à 50 % pH 7,3

L'aliquotage n'est pas nécessaire pour le stockage à -20C

\*\*\* Les 20ul contiennent 0,1% de BSA.

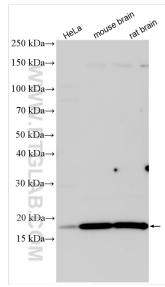
For technical support and original validation data for this product please contact:

T: 1 (888) 4PTGLAB (1-888-478-4522) (toll free in USA), or 1(312) 455-8498 (outside USA)

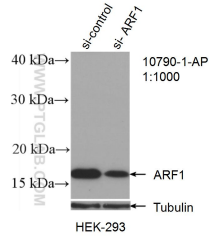
E: proteintech@ptglab.com  
W: ptglab.com

This product is exclusively available under Proteintech Group brand and is not available to purchase from any other manufacturer.

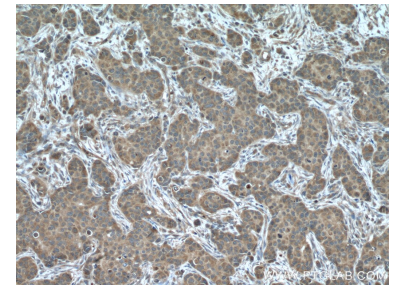
## Données de validation sélectionnées



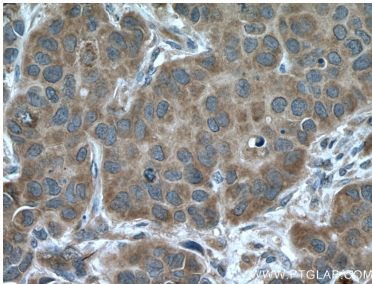
Various lysates were subjected to SDS PAGE followed by western blot with 10790-1-AP (ARF1 antibody) at dilution of 1:2000 incubated at room temperature for 1.5 hours.



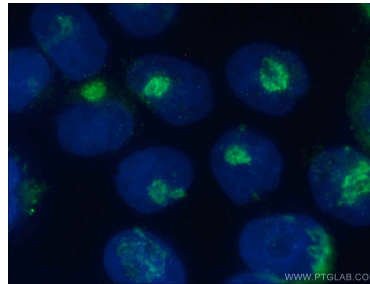
WB result of ARF1 antibody (10790-1-AP; 1:1000; incubated at room temperature for 1.5 hours) with sh-Control and sh-ARF1 transfected HEK-293 cells.



Immunohistochemical analysis of paraffin-embedded human breast cancer tissue slide using 10790-1-AP (ARF1 antibody) at dilution of 1:200 (under 10x lens. Heat mediated antigen retrieval with Tris-EDTA buffer (pH 9.0).



Immunohistochemical analysis of paraffin-embedded human breast cancer tissue slide using 10790-1-AP (ARF1 antibody) at dilution of 1:200 (under 40x lens. Heat mediated antigen retrieval with Tris-EDTA buffer (pH 9.0).



Immunofluorescent analysis of (4% PFA) fixed HeLa cells using 10790-1-AP (ARF1 antibody) at dilution of 1:50 and Alexa Fluor 488-Conjugated AffiniPure Goat Anti-Rabbit IgG(H+L).