

À des fins de recherche uniquement

# Anticorps Polyclonal de lapin anti-IFNGR1



Numéro de catalogue: 10808-1-AP

9 Publications

## Informations de base

Numéro de catalogue:

10808-1-AP

Numéro d'acquisition GenBank:

BC005333

Méthode de purification:

Purification par affinité contre l'antigène

Taille:

150ul, Concentration: 1000 µg/ml by Nanodrop and 533 µg/ml by Bradford method using BSA as the standard;

Identification du gène (NCBI):

3459

Dilutions recommandées:

WB 1:500-1:1000  
IP 0.5-4.0 ug for IP and 1:500-1:1000 for WB  
IHC 1:50-1:500

Hôte:

Lapin

Nom complet:

interferon gamma receptor 1

MW calculé

54 kDa

Isotype:

IgG

MW observés:

90 kDa

Immunogen Catalog Number:

AG1114

## Applications

Applications testées:

FC, IHC, IP, WB, ELISA

Demandes citées:

IF, IHC, WB

Spécificité de l'espèce:

Humain

Espèces citées:

Humain, souris

**Remarque-IHC: il est suggéré de démasquer l'antigène avec un tampon de TE buffer pH 9,0; (\*) A défaut, le démasquage de l'antigène peut être effectué avec un tampon citrate pH 6,0.**

Contrôles positifs:

WB : cellules HEK-293, cellules HepG2

IP : cellules HepG2,

IHC : tissu de cancer du pancréas humain,

## Informations générales

Interferon-gamma (IFN- $\gamma$ ) is a cytokine critical for innate and adaptive immunity against viral and intracellular bacterial infections and for tumor control. Cellular responses to IFN- $\gamma$  are activated through its interaction with a heterodimeric receptor consisting of two subunits, IFNGR1 (CD119) and IFNGR2. IFNGR1 is the ligand-binding subunit which binds IFN- $\gamma$  with high affinity, whereas IFNGR2 serves as the accessory subunit. Two subunits bind one IFN- $\gamma$  dimer. Defects in IFNGR1 are a cause of mendelian susceptibility to mycobacterial disease (MSMD), also known as familial disseminated atypical mycobacterial infection. (PMID: 17981204; 946248; 10888113)

## Publications notables

Autrice	Pubmed ID	Journal	Application
Kefang Tan	28562647	PLoS One	WB
Shuang Qu	35663227	Mol Ther Oncolytics	IF
Elena Parmigiani	35803280	Dev Cell	WB

## Stockage

Stockage:

Stocker à -20°C. Stable pendant un an après l'expédition.

Tampon de stockage:

PBS avec azoture de sodium à 0,02 % et glycérol à 50 % pH 7,3

L'aliquotage n'est pas nécessaire pour le stockage à -20C

\*\*\* Les 20ul contiennent 0,1% de BSA.

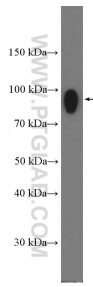
For technical support and original validation data for this product please contact:

T: 1 (888) 4PTGLAB (1-888-478-4522) (toll free in USA), or 1(312) 455-8498 (outside USA)

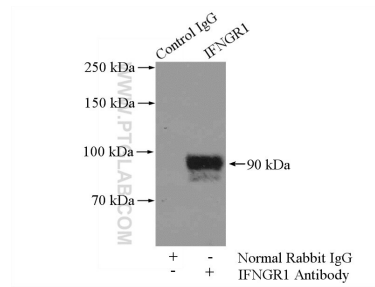
E: proteintech@ptglab.com  
W: ptglab.com

This product is exclusively available under Proteintech Group brand and is not available to purchase from any other manufacturer.

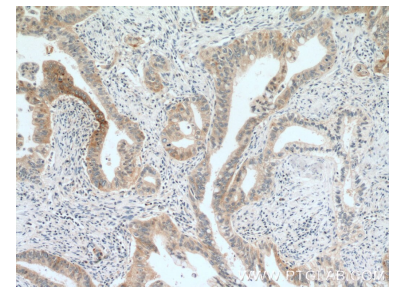
## Données de validation sélectionnées



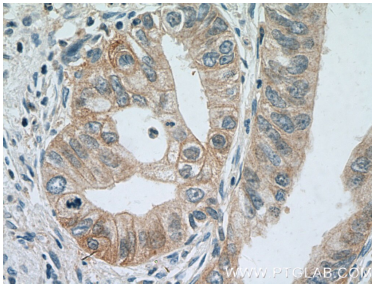
HEK-293 cells were subjected to SDS PAGE followed by western blot with 10808-1-AP (IFNGR1 Antibody) at dilution of 1:600 incubated at room temperature for 1.5 hours.



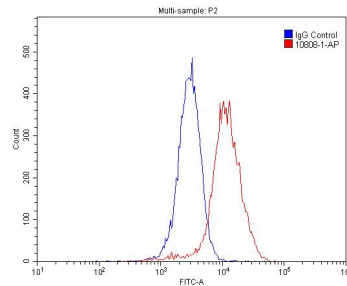
IP Result of anti-IFNGR1 (IP:10808-1-AP, 4ug; Detection:10808-1-AP 1:500) with HepG2 cells lysate 1800ug.



Immunohistochemical analysis of paraffin-embedded human pancreas cancer tissue slide using 10808-1-AP (IFNGR1 Antibody) at dilution of 1:200 (under 10x lens). Heat mediated antigen retrieval with Tris-EDTA buffer (pH 9.0).



Immunohistochemical analysis of paraffin-embedded human pancreas cancer tissue slide using 10808-1-AP (IFNGR1 Antibody) at dilution of 1:200 (under 40x lens). Heat mediated antigen retrieval with Tris-EDTA buffer (pH 9.0).



1X10<sup>6</sup> HepG2 cells were stained with .2ug IFNGR1 antibody (10808-1-AP, red) and control antibody (blue). Fixed with 4% PFA blocked with 3% BSA (30 min). Alexa Fluor 488-conjugated AffiniPure Goat Anti-Rabbit IgG(H+L) with dilution 1:1500.