

À des fins de recherche uniquement

# Anticorps Polyclonal de lapin anti-SMARCE1



Numéro de catalogue: 10814-1-AP

## Informations de base

<b>Numéro de catalogue:</b> 10814-1-AP	<b>Numéro d'acquisition GenBank:</b> BC007082	<b>Méthode de purification:</b> Purification par affinité contre l'antigène
<b>Taille:</b> 150ul, Concentration: 900 µg/ml by Nanodrop and 433 µg/ml by Bradford method using BSA as the standard;	<b>Identification du gène (NCBI):</b> 6605	<b>Dilutions recommandées:</b> WB 1:500-1:2000 IP 0.5-4.0 ug for IP and 1:500-1:1000 for WB IHC 1:50-1:500
<b>Hôte:</b> Lapin	<b>Nom complet:</b> SWI/SNF related, matrix associated, actin dependent regulator of chromatin, subfamily e, member 1	
<b>Isotype:</b> IgG	<b>MW calculé</b> 47 kDa	
<b>Immunogen Catalog Number:</b> AG1161	<b>MW observés:</b> 50-55 kDa	

## Applications

<b>Applications testées:</b> IHC, IP, WB, ELISA	<b>Contrôles positifs:</b>
<b>Spécificité de l'espèce:</b> Humain, rat, souris	<b>WB:</b> cellules Jurkat, cellules HEK-293, cellules HeLa, cellules MCF-7
<b>Remarque-IHC:</b> <i>il est suggéré de démasquer l'antigène avec un tampon de TE buffer pH 9.0; (*) À défaut, le démasquage de l'antigène peut être effectué avec un tampon citrate pH 6,0.</i>	<b>IP:</b> cellules HEK-293, <b>IHC:</b> tissu de cancer de la prostate humain,

## Informations générales

Via antagonizing chromatin-mediated transcriptional repression, the SWI/SNF complex in *S. cerevisiae* and *Drosophila* is thought to facilitate transcriptional activation of specific genes. The BRG1/brm-associated factors, or SMARCE1, complex in mammals is functionally related to SWI/SNF and consists of 9 to 12 subunits, some of which are homologous to SWI/SNF subunits. It contains a DNA-binding HMG domain and performs multiple biological functions, including DNA-, protein- and chromatin-binding, transcription coactivating activity, chromatin modification, DNA-dependent negative regulation of transcription, regulation of transcription of the RNA polymerase II promoter. In addition, SMARCE1, as an ER (estrogen receptor) subtype-selective modulator, regulates ER mediated transcription in a ligand-dependent manner and also directly binds to AR (androgen receptor) to alter its activity. The calculated molecular weight of SMARCE1 is 47 kDa, but modified SMARCE1 is about 55 kDa.

## Stockage

**Stockage:**  
Stocker à -20°C. Stable pendant un an après l'expédition.  
**Tampon de stockage:**  
PBS avec azoture de sodium à 0,02 % et glycérol à 50 % pH 7,3  
L'aliquotage n'est pas nécessaire pour le stockage à -20C

\*\*\* Les 20ul contiennent 0,1% de BSA.

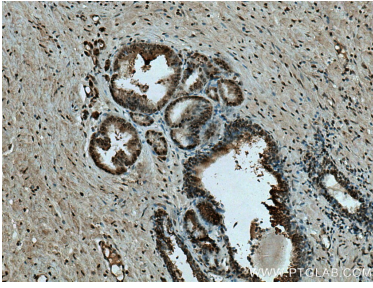
For technical support and original validation data for this product please contact:

T: 1 (888) 4PTGLAB (1-888-478-4522) (toll free in USA), or 1(312) 455-8498 (outside USA)

E: [proteintech@ptglab.com](mailto:proteintech@ptglab.com)  
W: [ptglab.com](http://ptglab.com)

This product is exclusively available under Proteintech Group brand and is not available to purchase from any other manufacturer.

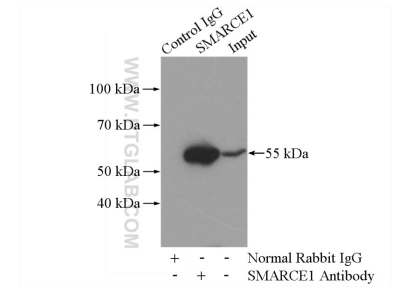
## Données de validation sélectionnées



Immunohistochemical analysis of paraffin-embedded human prostate cancer tissue slide using 10814-1-AP (SMARCE1 antibody) at dilution of 1:200 (under 10x lens). Heat mediated antigen retrieval with Tris-EDTA buffer (pH 9.0).



Jurkat cells were subjected to SDS PAGE followed by western blot with 10814-1-AP (SMARCE1 antibody) at dilution of 1:1000 incubated at room temperature for 1.5 hours.



IP Result of anti-SMARCE1 (IP:10814-1-AP, 4ug; Detection:10814-1-AP 1:800) with HEK-293 cells lysate 880ug.

Control IgG	SMARCE1	Input
+	-	-
-	+	-

Normal Rabbit IgG  
SMARCE1 Antibody