

À des fins de recherche uniquement

# Anticorps Polyclonal de lapin anti-IVD



Numéro de catalogue: 10822-1-AP

7 Publications

## Informations de base

Numéro de catalogue:  
10822-1-AP

Taille:  
150ul, Concentration: 500 µg/ml by Nanodrop and 360 µg/ml by Bradford method using BSA as the standard;

Hôte:  
Lapin

Isotype:  
IgG

Immunogen Catalog Number:  
AG1252

Numéro d'acquisition GenBank:  
BC017202

Identification du gène (NCBI):  
3712

Nom complet:  
isovaleryl Coenzyme A dehydrogenase

MW calculé  
46 kDa

MW observés:  
41-46 kDa

Méthode de purification:  
Purification par affinité contre l'antigène

Dilutions recommandées:  
WB 1:2000-1:12000  
IP 0.5-4.0 ug for IP and 1:200-1:1000 for WB  
IHC 1:300-1:1200  
IF 1:50-1:500

## Applications

Applications testées:  
IF, IHC, IP, WB, ELISA

Demandes citées:  
IHC, WB

Spécificité de l'espèce:  
Humain, rat, souris

Espèces citées:  
rat, souris, arabidopsis

**Remarque-IHC: il est suggéré de démasquer l'antigène avec un tampon de TE buffer pH 9,0; (\*) A défaut, 'le démasquage de l'antigène peut être 'effectué avec un tampon citrate pH 6,0.**

Contrôles positifs:

WB : cellules MCF-7, cellules HepG2, tissu cérébral humain, tissu hépatique de rat, tissu hépatique de souris

IP : cellules MCF-7,

IHC : tissu de cancer du foie humain,

IF : cellules MCF-7,

## Informations générales

IVD (Isovaleryl CoA dehydrogenase, mitochondrial) is a member of the acylCoA dehydrogenase family and is involved in the catabolism of leucine. In size, IVD precursor and mature proteins produced by class I mutants are indistinguishable from their normal counterparts. Class II, III, and IV mutants make IVD precursor proteins 42 kD in size rather than the normal 45 kD (PMID:2063866). It has 2 isoforms produced by alternative splicing.

## Publications notables

Autrice	Pubmed ID	Journal	Application
Min-Zhi Peng	35727412	Cell Mol Life Sci	WB
Danielle S Brito	35031834	Plant Cell Rep	WB
Signe Horn	26649805	Mol Endocrinol	WB

## Stockage

Stockage:

Stocker à -20°C. Stable pendant un an après l'expédition.

Tampon de stockage:

PBS avec azoture de sodium à 0,02 % et glycérol à 50 % pH 7,3

L'aliquotage n'est pas nécessaire pour le stockage à -20C

\*\*\* Les 20ul contiennent 0,1% de BSA.

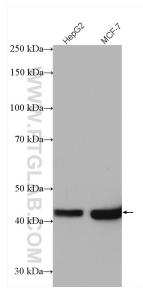
For technical support and original validation data for this product please contact:

T: 1 (888) 4PTGLAB (1-888-478-4522) (toll free in USA), or 1(312) 455-8498 (outside USA)

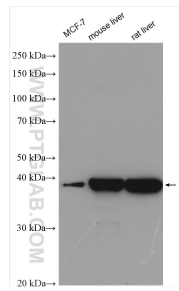
E: proteintech@ptglab.com  
W: ptglab.com

This product is exclusively available under Proteintech Group brand and is not available to purchase from any other manufacturer.

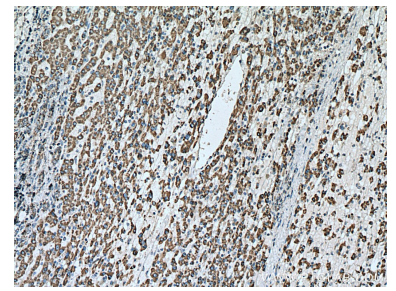
## Données de validation sélectionnées



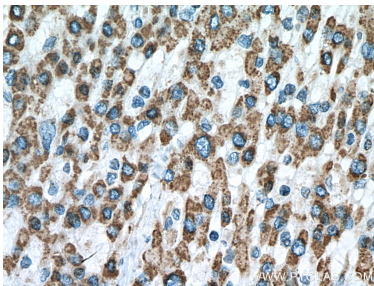
Various lysates were subjected to SDS PAGE followed by western blot with 10822-1-AP (IVD antibody) at dilution of 1:2000 incubated at room temperature for 1.5 hours.



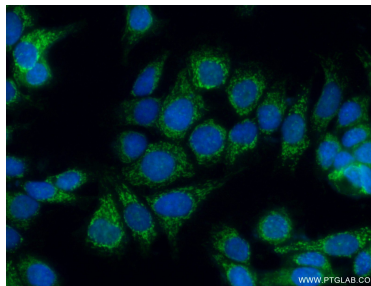
Various lysates were subjected to SDS PAGE followed by western blot with 10822-1-AP (IVD antibody) at dilution of 1:6000 incubated at room temperature for 1.5 hours.



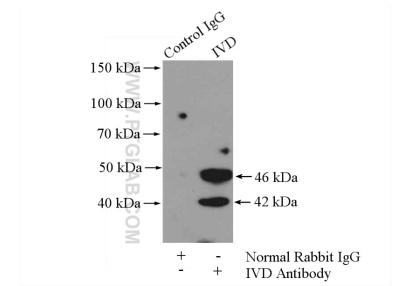
Immunohistochemical analysis of paraffin-embedded human liver cancer tissue slide using 10822-1-AP (IVD antibody) at dilution of 1:600 (under 10x lens). Heat mediated antigen retrieval with Tris-EDTA buffer (pH 9.0).



Immunohistochemical analysis of paraffin-embedded human liver cancer tissue slide using 10822-1-AP (IVD antibody) at dilution of 1:600 (under 40x lens). Heat mediated antigen retrieval with Tris-EDTA buffer (pH 9.0).



Immunofluorescent analysis of (4% PFA) fixed MCF-7 cells using 10822-1-AP (IVD antibody) at dilution of 1:50 and Alexa Fluor 488-conjugated AffiniPure Goat Anti-Rabbit IgG(H+L).



IP Result of anti-IVD (IP:10822-1-AP, 4ug; Detection:10822-1-AP 1:300) with MCF-7 cells lysate 800ug.