

À des fins de recherche uniquement

Anticorps Polyclonal de lapin anti-TPT1



Numéro de catalogue: 10824-1-AP

Phare

6 Publications

Informations de base

Numéro de catalogue:

10824-1-AP

Taille:

150ul, Concentration: 600 µg/ml by Nanodrop;

Hôte:

Lapin

Isotype:

IgG

Immunogen Catalog Number:

AG1268

Numéro d'acquisition GenBank:

BC003352

Identification du gène (NCBI):

7178

Nom complet:

tumor protein, translationally-controlled 1

MW calculé

22 kDa

MW observés:

22-25 kDa

Méthode de purification:

Purification par affinité contre l'antigène

Dilutions recommandées:

WB 1:1000-1:8000

IP 0.5-4.0 µg for IP and 1:500-1:1000 for WB

IHC 1:20-1:200

IF 1:200-1:800

Applications

Applications testées:

IF, IHC, IP, WB, ELISA

Demandes citées:

IF, IHC, IP, WB

Spécificité de l'espèce:

Humain, rat, souris

Espèces citées:

Humain, rat, souris

Contrôles positifs:

WB : cellules A431, cellules MCF-7, tissu placentaire de souris

IP : tissu placentaire humain,

IHC : tissu de cancer du côlon humain,

IF : cellules HeLa,

Remarque-IHC: il est suggéré de démasquer l'antigène avec un tampon de TE buffer pH 9,0; (*) À défaut, le démasquage de l'antigène peut être effectué avec un tampon citrate pH 6,0.

Informations générales

The translationally controlled tumor protein (TPT1, also known as TCTP) is a highly conserved, abundantly expressed protein associated with cell growth and apoptosis regulation. It is overexpressed in most tumor cells and its down-regulation decreases the viability of those cells. This antibody detected 22-25 kDa TPT1 in lysates. An additional band around 50 kDa can also be observed occasionally, possibly representing the dimer form of TPT1.

Publications notables

Autrice	Pubmed ID	Journal	Application
Nicolas Fischer	33259807	Chem Biol Interact	WB
Dongrong Zhu	33667688	Pharmacol Res	WB
Staflin Karin K	19558675	BMC Cancer	WB,IHC

Stockage

Stockage:

Stocker à -20°C. Stable pendant un an après l'expédition.

Tampon de stockage:

PBS avec azoture de sodium à 0,02 % et glycérol à 50 % pH 7,3

L'aliquotage n'est pas nécessaire pour le stockage à -20C

*** Les 20ul contiennent 0,1% de BSA.

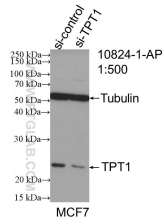
For technical support and original validation data for this product please contact:

T: 1 (888) 4PTGLAB (1-888-478-4522) (toll free in USA), or 1(312) 455-8498 (outside USA)

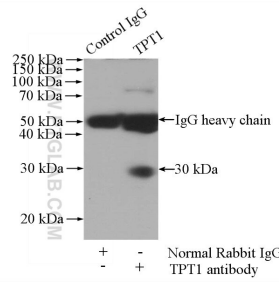
E: proteintech@ptglab.com
W: ptglab.com

This product is exclusively available under Proteintech Group brand and is not available to purchase from any other manufacturer.

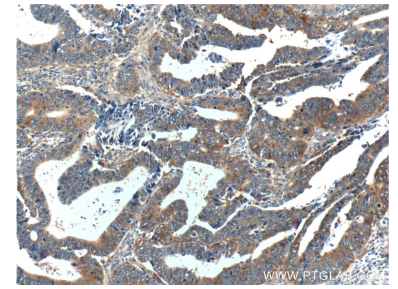
Données de validation sélectionnées



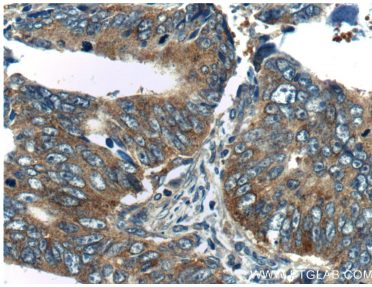
WB result of TPT1 antibody (10824-1-AP; 1:500; incubated at room temperature for 1.5 hours) with sh-Control and sh-TPT1 transfected MCF-7 cells.



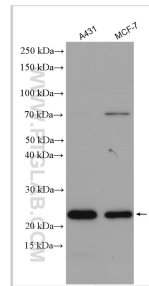
IP Result of anti-TPT1 (IP:10824-1-AP, 4 μ g; Detection:10824-1-AP 1:500) with human placenta tissue lysate 1520 μ g.



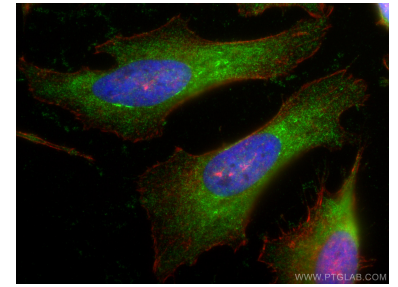
Immunohistochemical analysis of paraffin-embedded human colon cancer tissue slide using 10824-1-AP (TPT1 Antibody) at dilution of 1:200 (under 10 \times lens).



Immunohistochemical analysis of paraffin-embedded human colon cancer tissue slide using 10824-1-AP (TPT1 Antibody) at dilution of 1:200 (under 40 \times lens).



Various lysates were subjected to SDS PAGE followed by western blot with 10824-1-AP (TPT1 antibody) at dilution of 1:4000 incubated at room temperature for 1.5 hours.



Immunofluorescent analysis of (-20°C Ethanol) fixed HeLa cells using TPT1 antibody (10824-1-AP) at dilution of 1:400 and CoraLite®488-Conjugated AffiniPure Goat Anti-Rabbit IgG(H+L), CL594-Phalloidin (red).