

À des fins de recherche uniquement

# Anticorps Polyclonal de lapin anti-Cytokeratin 18



Numéro de catalogue: 10830-1-AP

91 Publications

## Informations de base

Numéro de catalogue:

10830-1-AP

Taille:

150ul, Concentration: 450 µg/ml by Nanodrop;

Hôte:

Lapin

Isotype:

IgG

Immunogen Catalog Number:

AG1260

Numéro d'acquisition GenBank:

BC000180

Identification du gène (NCBI):

3875

Nom complet:

keratin 18

MW calculé

48 kDa

MW observés:

48 kDa

Méthode de purification:

Purification par affinité contre l'antigène

Dilutions recommandées:

WB 1:2000-1:16000

IP 0.5-4.0 ug for IP and 1:1000-1:4000 for WB

IHC 1:200-1:1000

IF 1:50-1:500

## Applications

Applications testées:

FC, IF, IHC, IP, WB, ELISA

Demandes citées:

FC, IF, IHC, WB

Spécificité de l'espèce:

Humain, souris

Espèces citées:

bovin, Humain, porc, rat, souris, duck

**Remarque-IHC: il est suggéré de démasquer l'antigène avec un tampon de TE buffer pH 9,0; (\*) À défaut, le démasquage de l'antigène peut être effectué avec un tampon citrate pH 6,0.**

Contrôles positifs:

WB : cellules HeLa, cellules A431, cellules K-562

IP : cellules A431,

IHC : tissu de cancer du sein humain, tissu de cancer de la prostate humaine, tissu de cancer de l'endomètre humain, tissu de cancer de l'estomac humain, tissu de cancer du côlon humain, tissu de cancer du foie humain, tissu de cancer du pancréas humain, tissu de cancer du poumon humain, tissu de carcinome à cellules rénales humaine, tissu de tumeur ovarienne humaine, tissu rénal humain

IF : cellules HepG2, cellules HeLa, tissu d'épithélium olfactif de souris

## Informations générales

Keratins are a large family of proteins that form the intermediate filament cytoskeleton of epithelial cells, which are classified into two major sequence types. Type I keratins are a group of acidic intermediate filament proteins, including K9-K23, and the hair keratins Ha1-Ha8. Type II keratins are the basic or neutral counterparts to the acidic type I keratins, including K1-K8, and the hair keratins, Hb1-Hb6. KRT18, also named as CYK18, PIG46 and K18, is the most commonly found members of the intermediate filament gene family. KRT18 is a type I keratin which is found primarily in non squamous epithelia and is present in a majority of adenocarcinomas and ductal carcinomas but not in squamous cell carcinomas.

## Publications notables

Autrice	Pubmed ID	Journal	Application
Ahmed Ghallab	34685496	Cells	IHC
Wenbin Xu	33061289	Drug Des Devel Ther	IF
Linlin Zhang	32954430	J Anim Sci	IF

## Stockage

Stockage:

Stocker à -20°C. Stable pendant un an après l'expédition.

Tampon de stockage:

PBS avec azoture de sodium à 0,02 % et glycérol à 50 % pH 7,3

L'aliquotage n'est pas nécessaire pour le stockage à -20C

\*\*\* Les 20ul contiennent 0,1% de BSA.

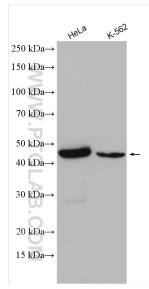
For technical support and original validation data for this product please contact:

T: 1 (888) 4PTGLAB (1-888-478-4522) (toll free in USA), or 1(312) 455-8498 (outside USA)

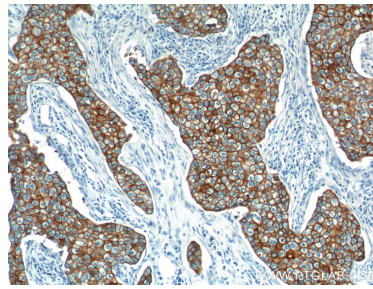
E: proteintech@ptglab.com  
W: ptglab.com

This product is exclusively available under Proteintech Group brand and is not available to purchase from any other manufacturer.

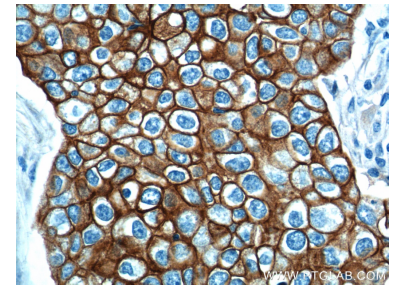
## Données de validation sélectionnées



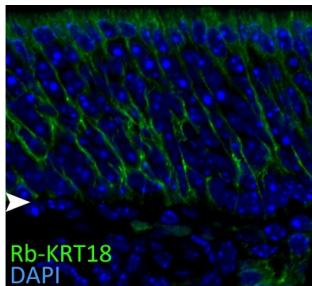
Various lysates were subjected to SDS PAGE followed by western blot with 10830-1-AP (Cytokeratin 18 antibody) at dilution of 1:8000 incubated at room temperature for 1.5 hours.



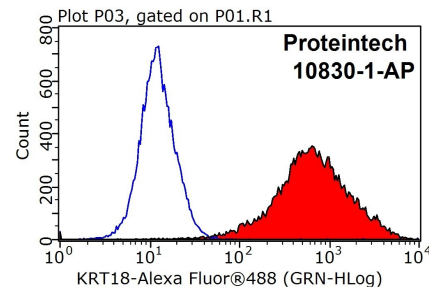
Immunohistochemical analysis of paraffin-embedded human breast cancer tissue slide using 10830-1-AP (Cytokeratin 18 antibody at dilution of 1:1000 (under 10x lens).



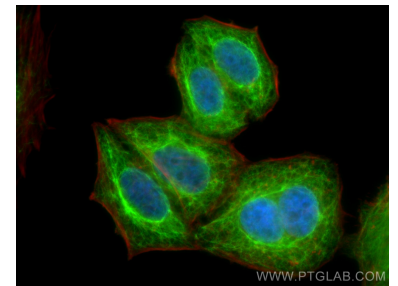
Immunohistochemical analysis of paraffin-embedded human breast cancer tissue slide using 10830-1-AP (Cytokeratin 18 antibody at dilution of 1:1000 (under 40x lens).



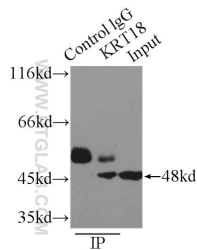
IF result of CK18 antibody (10830-1-AP, 1:50) with 1% PLP fixed the apical sustentacular cells of adult mouse olfactory epithelium. (Green: CK18; Blue: DAPI). Basal lamina is marked by an arrow head. By Brian Lin, Tufts University.



1X10<sup>6</sup> MCF-7 cells were stained with 0.2ug Cytokeratin 18 antibody (10830-1-AP, red) and control antibody (blue). Fixed with 90% MeOH blocked with 3% BSA (30 min). Alexa Fluor 488-conjugated AffiniPure Goat Anti-Rabbit IgG(H+L) with dilution 1:1000.



Immunofluorescent analysis of (4% PFA) fixed HepG2 cells using Cytokeratin 18 antibody (10830-1-AP) at dilution of 1:200 and CoraLite@488-Conjugated AffiniPure Goat Anti-Rabbit IgG(H+L), CL594-Phalloidin (red).



IP Result of anti-Cytokeratin 18 (IP:10830-1-AP, 3ug; Detection:10830-1-AP 1:2000) with A431 cells lysate 3300ug.