

À des fins de recherche uniquement

Anticorps Polyclonal de lapin anti-Alpha Synuclein



Numéro de catalogue: 10842-1-AP

55 Publications

Informations de base

Numéro de catalogue: 10842-1-AP	Numéro d'acquisition GenBank: BC013293	Méthode de purification: Purification par affinité contre l'antigène
Taille: 150ul, Concentration: 590 µg/ml by Nanodrop;	Identification du gène (NCBI): 6622	Dilutions recommandées: WB 1:1000-1:6000 IHC 1:50-1:500 IF 1:200-1:800
Hôte: Lapin	Nom complet: synuclein, alpha (non A4 component of amyloid precursor)	
Isotype: IgG	MW calculé: 14 kDa	
Immunogen Catalog Number: AG1285	MW observés: 15-19 kDa	

Applications

Applications testées:

IF, IHC, WB, ELISA

Demandes citées:

CoIP, ELISA, IF, IHC, IP, WB

Spécificité de l'espèce:

Humain, rat, souris

Espèces citées:

Humain, levure, rat, souris, pinson zébré

Contrôles positifs:

WB : tissu cérébral de souris, tissu cérébral de rat, tissu cérébral humain

IHC : tissu cérébral de souris, tissu cutané humain, tissu placentaire humain, tissu pulmonaire humain, tissu rénal humain, tissu testiculaire humain

IF : cellules SH-SY5Y,

Remarque-IHC: il est suggéré de démasquer l'antigène avec un tampon de TE buffer pH 9,0; (*) À défaut, le démasquage de l'antigène peut être effectué avec un tampon citrate pH 6,0.

Informations générales

Alpha Synuclein (α -syn) is a 14-19 kDa phosphoprotein that is primarily localized to the presynaptic terminals of mature neurons, where it is involved in synaptic function and plasticity. α -syn has drawn intense interest ever since the late 1990s, when the first α -synuclein missense mutation was identified as a cause of familial Parkinson's disease (PD). Aggregated and hyper-phosphorylated forms of α -syn protein are the pathological hallmark of Lewy body disease, which includes Parkinson's disease (PD), diffuse Lewy body disease (DLBD), and Lewy body variant of Alzheimer's disease (LBV). This antibody can recognize all the isoforms of α -syn.

Publications notables

Autrice	Pubmed ID	Journal	Application
Damilare D Akintade	33003464	Cells	WB
Kuo-Hsuan Chang	34551822	Stem Cell Res Ther	WB
Wen-Li Dong	34531546	Acta Pharmacol Sin	WB

Stockage

Stockage:

Stocker à -20°C. Stable pendant un an après l'expédition.

Tampon de stockage:

PBS avec azoture de sodium à 0,02 % et glycérol à 50 % pH 7,3

L'aliquotage n'est pas nécessaire pour le stockage à -20C

*** Les 20ul contiennent 0,1% de BSA.

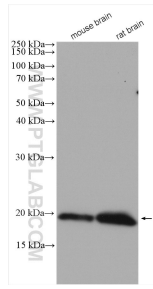
For technical support and original validation data for this product please contact:

T: 1 (888) 4PTGLAB (1-888-478-4522) (toll free in USA), or 1(312) 455-8498 (outside USA)

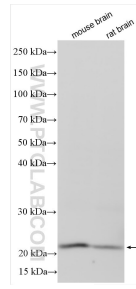
E: proteintech@ptglab.com
W: ptglab.com

This product is exclusively available under Proteintech Group brand and is not available to purchase from any other manufacturer.

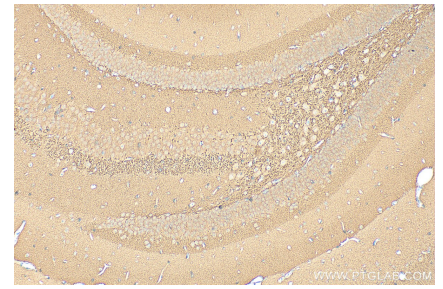
Données de validation sélectionnées



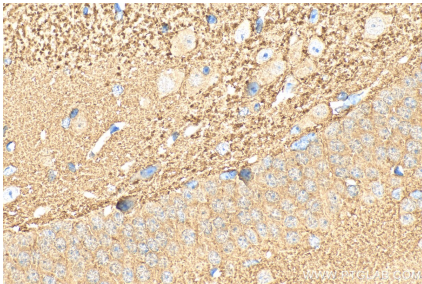
Various lysates were subjected to SDS PAGE followed by western blot with 10842-1-AP (alpha-synuclein antibody) at dilution of 1:800 incubated at room temperature for 1.5 hours.



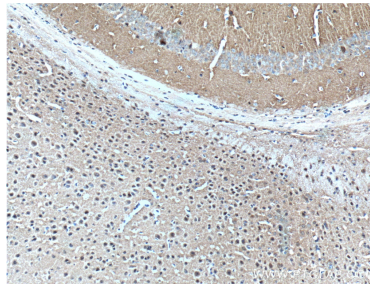
Various lysates were subjected to SDS PAGE followed by western blot with 10842-1-AP (Alpha Synuclein antibody) at dilution of 1:3000 incubated at room temperature for 1.5 hours.



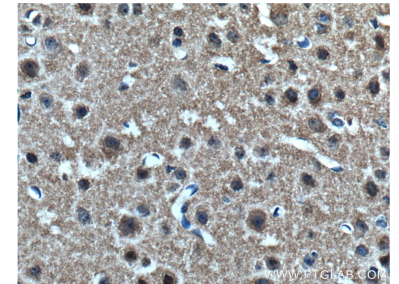
Immunohistochemical analysis of paraffin-embedded mouse brain tissue slide using 10842-1-AP (Alpha Synuclein antibody) at dilution of 1:200 (under 10x lens). Heat mediated antigen retrieval with Tris-EDTA buffer (pH 9.0).



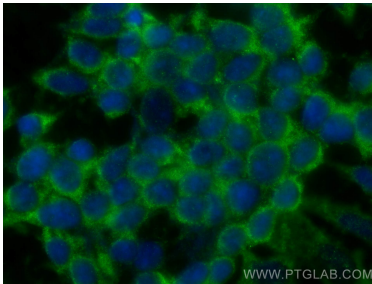
Immunohistochemical analysis of paraffin-embedded mouse brain tissue slide using 10842-1-AP (Alpha Synuclein antibody) at dilution of 1:200 (under 40x lens). Heat mediated antigen retrieval with Tris-EDTA buffer (pH 9.0).



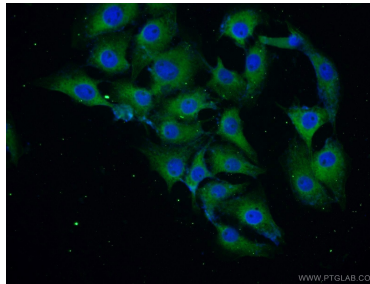
Immunohistochemical analysis of paraffin-embedded mouse brain tissue slide using 10842-1-AP (alpha-synuclein antibody) at dilution of 1:200 (under 10x lens). Heat mediated antigen retrieval with Tris-EDTA buffer (pH 9.0).



Immunohistochemical analysis of paraffin-embedded mouse brain tissue slide using 10842-1-AP (alpha-synuclein antibody) at dilution of 1:200 (under 40x lens). Heat mediated antigen retrieval with Tris-EDTA buffer (pH 9.0).



Immunofluorescent analysis of (-20°C Ethanol) fixed SH-SY5Y cells using Alpha Synuclein antibody (10842-1-AP) at dilution of 1:400 and CoraLite®488-Conjugated AffiniPure Goat Anti-Rabbit IgG(H+L).



Immunofluorescent analysis of SH-SY5Y cells using 10842-1-AP (alpha-synuclein antibody) at dilution of 1:25 and Alexa Fluor 488-conjugated AffiniPure Goat Anti-Rabbit IgG(H+L).