

À des fins de recherche uniquement

# Anticorps Polyclonal de lapin anti-Palladin



Numéro de catalogue: 10853-1-AP

Phare

69 Publications

## Informations de base

Numéro de catalogue:  
10853-1-AP

Taille:  
150ul, Concentration: 300 µg/ml by Nanodrop and 213 µg/ml by Bradford method using BSA as the standard;

Hôte:  
Lapin

Isotype:  
IgG

Immunogen Catalog Number:  
AG1288

Numéro d'acquisition GenBank:  
BC013867

Identification du gène (NCBI):  
23022

Nom complet:  
palladin, cytoskeletal associated protein

MW calculé  
1383 aa, 151 kDa

MW observés:  
95 kDa, 140 kDa

Méthode de purification:  
Purification par affinité contre l'antigène

Dilutions recommandées:  
WB 1:1000-1:4000  
IP 0.5-4.0 ug for IP and 1:1000-1:4000 for WB  
IHC 1:50-1:500  
IF 1:20-1:200

## Applications

Applications testées:  
FC, IF, IHC, IP, WB, ELISA

Demandes citées:  
COIP, IF, IHC, IP, WB

Spécificité de l'espèce:  
Humain, souris

Espèces citées:  
Humain, rat, souris

**Remarque-IHC: il est suggéré de démasquer l'antigène avec un tampon de TE buffer pH 9.0; (\*) A défaut, 'le démasquage de l'antigène peut être effectué avec un tampon citrate pH 6,0.**

Contrôles positifs:

WB : cellules HeLa, cellules A549

IP : cellules HeLa, cellules HEK-293

IHC : tissu de cancer du côlon humain, tissu de cancer du sein humain, tissu de côlon humain, tissu de tumeur ovarienne humain

IF : cellules HeLa,

## Informations générales

Palladin is an actin associated protein serving as a cytoskeleton scaffold, and actin cross linker, localizing at stress fibers, focal adhesions, and other actin based structures. Palladin exists as multiple isoforms through alternative transcription initiation sites and splicing. There are three major isoforms (200, 140, 90-92 kDa) and multiple minor isoforms. Different palladin isoforms are expressed in a tissue-specific pattern during development and in adult organs: the 200 kDa isoform is predominantly expressed in the heart, skeletal muscle, testis and bone; the 140 kDa isoform is widely expressed with the exception of liver, muscle, and skin; the 90-92 kDa isoform is broadly expressed in embryonic tissues and highly expressed in adult smooth muscle tissues (21455759). Recently overexpression of palladin has been linked to the promoted invasive motility in several types of cancers (18978809, 22291919). The 85-90 kDa palladin isoform has been observed predominantly expressed in pancreatic ductal adenocarcinoma (PDA) while a 65 kDa isoform is expressed in normal pancreas and non-PDA tumors (20436683). This antibody, generated against the fragment 999-1383aa of palladin, recognizes most isoforms of this protein, except isoform 6.

## Publications notables

Autrice	Pubmed ID	Journal	Application
Sheng Hu	36038029	Neurosci Lett	WB
Avital Gilam	27641360	Nat Commun	WB, IHC
Xiang Zhang	28924223	Sci Rep	WB, IF, COIP

## Stockage

Stockage:

Stocker à -20°C. Stable pendant un an après l'expédition.

Tampon de stockage:

PBS avec azoture de sodium à 0,02 % et glycérol à 50 % pH 7,3

L'aliquotage n'est pas nécessaire pour le stockage à -20C

\*\*\* Les 20ul contiennent 0,1% de BSA.

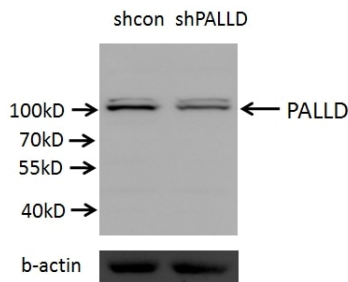
For technical support and original validation data for this product please contact:

T: 1 (888) 4PTGLAB (1-888-478-4522) (toll free in USA), or 1(312) 455-8498 (outside USA)

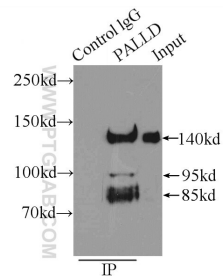
E: proteintech@ptglab.com  
W: ptglab.com

This product is exclusively available under Proteintech Group brand and is not available to purchase from any other manufacturer.

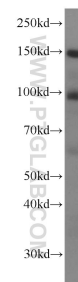
## Données de validation sélectionnées



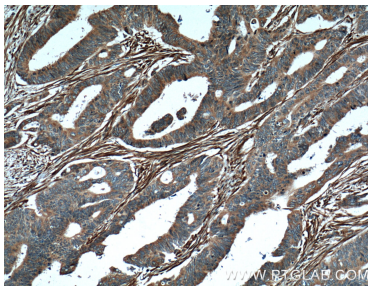
A549 cells (shcontrol and shRNA of PALLD) were subjected to SDS PAGE followed by western blot with 10853-1-AP (PALLD antibody) at dilution of 1:2000.



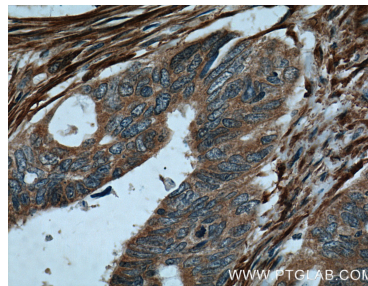
IP Result of anti-Palladin (IP:10853-1-AP, 4ug; Detection:10853-1-AP 1:2000) with HeLa cells lysate 1800ug.



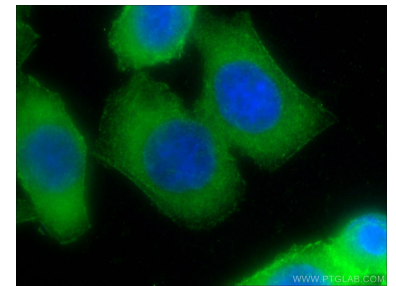
HeLa cells were subjected to SDS PAGE followed by western blot with 10853-1-AP (Palladin antibody) at dilution of 1:2000 incubated at room temperature for 1.5 hours.



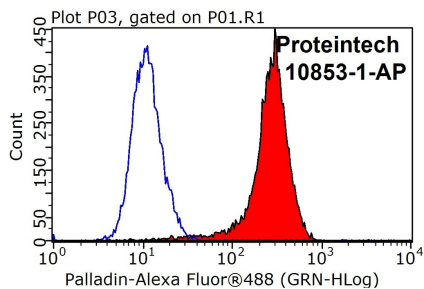
Immunohistochemical analysis of paraffin-embedded human colon cancer tissue slide using 10853-1-AP (PALLD, palladin Antibody) at dilution of 1:200 (under 10x lens). Heat mediated antigen retrieval with Tris-EDTA buffer (pH 9.0).



Immunohistochemical analysis of paraffin-embedded human colon cancer tissue slide using 10853-1-AP (PALLD, palladin Antibody) at dilution of 1:200 (under 40x lens). Heat mediated antigen retrieval with Tris-EDTA buffer (pH 9.0).



Immunofluorescent analysis of HeLa cells using 10853-1-AP (Palladin antibody) at dilution of 1:50 and Alexa Fluor 488-conjugated AffiniPure Goat Anti-Rabbit IgG(H+L).



$1 \times 10^6$  HeLa cells were stained with 0.2ug PALLD, palladin antibody (10853-1-AP, red) and control antibody (blue). Cells were fixed with 4% PFA and permeabilized with 0.1% Triton X-100. Alexa Fluor 488-conjugated AffiniPure Goat Anti-Rabbit IgG(H+L) with dilution 1:1000.