

À des fins de recherche uniquement

Anticorps Polyclonal de lapin anti-JP45/JSRP1



Numéro de catalogue: 10854-1-AP

Informations de base

Numéro de catalogue: 10854-1-AP	Numéro d'acquisition GenBank: BC021201	Méthode de purification: Purification par affinité contre l'antigène
Taille: 150ul , Concentration: 600 µg/ml by Nanodrop and 253 µg/ml by Bradford method using BSA as the standard;	Identification du gène (NCBI): 126306	Dilutions recommandées: WB 1:500-1:1000 IHC 1:50-1:500 IF 1:50-1:500
Hôte: Lapin	Nom complet: junctional sarcoplasmic reticulum protein 1	
Isotype: IgG	MW calculé: 36 kDa, 45 kDa	
Immunogen Catalog Number: AG1300	MW observés: 30 kDa	

Applications

Applications testées: IF, IHC, WB, ELISA	Contrôles positifs: WB : tissu de muscle squelettique humain, IHC : tissu de cancer du pancréas humain, IF : cellules HepG2,
Spécificité de l'espèce: Humain	
Remarque-IHC: <i>il est suggéré de démasquer l'antigène avec un tampon de TE buffer pH 9,0; (*) À défaut, le démasquage de l'antigène peut être effectué avec un tampon citrate pH 6,0.</i>	

Informations générales

JSRP1 (Junctional sarcoplasmic reticulum protein 1), also known as JP-45, is an integral protein of the junctional face membrane of the skeletal muscle sarcoplasmic reticulum (SR), and interacts with calsequestrin and the skeletal-muscle dihydropyridine receptor Cav1. JP-45 is an important protein for functional expression of voltage-dependent calcium channels. Involvement of JP-45 in the molecular mechanism underlying skeletal muscle excitation-contraction coupling has been reported. Although the predicated molecular weight of JP-45 is 36 kDa, it appears a 45-kDa band in western blotting in most cases.

Stockage

Stockage:
Stocker à -20°C. Stable pendant un an après l'expédition.
Tampon de stockage:
PBS avec azoture de sodium à 0,02 % et glycérol à 50 % pH 7,3
L'aliquotage n'est pas nécessaire pour le stockage à -20C

*** Les 20ul contiennent 0,1% de BSA.

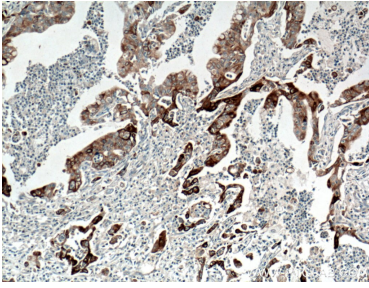
For technical support and original validation data for this product please contact:

T: 1 (888) 4PTGLAB (1-888-478-4522) (toll free in USA), or 1(312) 455-8498 (outside USA)

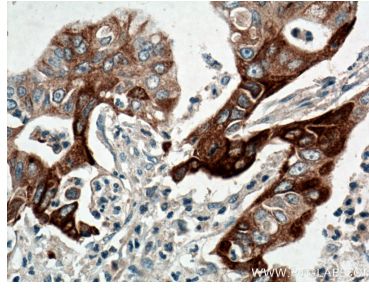
E: proteintech@ptglab.com
W: ptglab.com

This product is exclusively available under Proteintech Group brand and is not available to purchase from any other manufacturer.

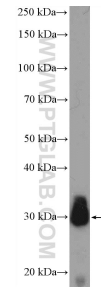
Données de validation sélectionnées



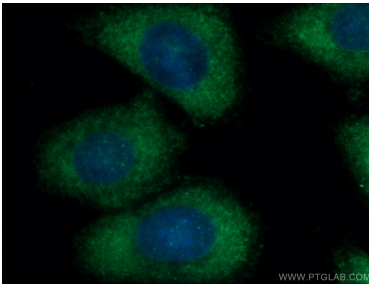
Immunohistochemical analysis of paraffin-embedded human pancreas cancer tissue slide using 10854-1-AP (JP45/JSRP1 antibody) at dilution of 1:200 (under 10x lens). Heat mediated antigen retrieval with Tris-EDTA buffer (pH 9.0).



Immunohistochemical analysis of paraffin-embedded human pancreas cancer tissue slide using 10854-1-AP (JP45/JSRP1 antibody) at dilution of 1:200 (under 40x lens). Heat mediated antigen retrieval with Tris-EDTA buffer (pH 9.0).



human skeletal muscle tissue were subjected to SDS PAGE followed by western blot with 10854-1-AP (JP45/JSRP1 antibody) at dilution of 1:600 incubated at room temperature for 1.5 hours.



Immunofluorescent analysis of (-20°C Ethanol) fixed HepG2 cells using 10854-1-AP (JP45/JSRP1 antibody) at dilution of 1:100 and Alexa Fluor 488-conjugated AffiniPure Goat Anti-Rabbit IgG(H+L).