

À des fins de recherche uniquement

# Anticorps Polyclonal de lapin anti-MECP2



Numéro de catalogue: 10861-1-AP

Phare

12 Publications

## Informations de base

Numéro de catalogue:  
10861-1-AP

Taille:  
150ul, Concentration: 300 µg/ml by  
Nanodrop;

Hôte:  
Lapin

Isotype:  
IgG

Immunogen Catalog Number:  
AG1309

Numéro d'acquisition GenBank:  
BC011612

Identification du gène (NCBI):  
4204

Nom complet:  
methyl CpG binding protein 2 (Rett  
syndrome)

MW calculé  
52 kDa, 53 kDa

MW observés:  
75 kDa

Méthode de purification:  
Purification par affinité contre  
l'antigène

Dilutions recommandées:  
WB 1:500-1:1000  
IP 0.5-4.0 ug for IP and 1:500-1:1000  
for WB  
IHC 1:50-1:500  
IF 1:20-1:200

## Applications

Applications testées:  
FC, IF, IHC, IP, WB, ELISA

Demandes citées:  
ChIP, IF, IHC, WB

Spécificité de l'espèce:  
Humain, rat, souris

Espèces citées:  
Humain, rat, souris

**Remarque-IHC: il est suggéré de démasquer l'antigène avec un tampon de TE buffer pH 9.0; (\*) À défaut, le démasquage de l'antigène peut être effectué avec un tampon citrate pH 6.0.**

Contrôles positifs:

WB : cellules MDA-MB-453s, cellules MCF-7, cellules SH-SY5Y, tissu cardiaque de souris, tissu cérébral de souris, tissu cérébral humain, tissu ovarien de souris, tissu pulmonaire de rat, tissu pulmonaire de souris

IP : cellules MCF-7, cellules HEK-293T

IHC : tissu cérébral humain, tissu cérébral de rat, tissu de cancer du sein humain, tissu de gliome humain

IF : cellules HepG2, tissu de cervelet de souris

## Informations générales

METHYL-CpG-BINDING PROTEIN 2(MECP2), is a chromatin-associated protein that can both activate and repress transcription. Mecp2 in the adult mouse is high in the brain, lung, and spleen, lower in heart and kidney. MECP2 takes part in the control of neuronal activity-dependent gene regulation, and this process may underlie the pathology of Rett syndrome, a severe developmental disorder with autistic phenotypes. As compared to wild-type monkeys, MECP2 transgenic monkeys exhibited a higher frequency of repetitive circular locomotion and increased stress responses, as measured by the threat-related anxiety and defensive test. Chromosomal protein that binds to methylated DNA. It can bind specifically to a single methyl-CpG pair. It is not influenced by sequences flanking the methyl-CpGs. Mediates transcriptional repression through interaction with histone deacetylase and the corepressor SIN3A. Two isoforms of MECP2 exist due to alternative splicing events. This antibody reacts with the MECP2 and phosphorylated MECP2 proteins. The calculated molecular weight of MECP2 is a 52 kDa, but the post-modified MECP2 protein is about 75-80 kDa (PMID: 12160743).

## Publications notables

Autrice	Pubmed ID	Journal	Application
Gamze Ayaz	34475492	Sci Rep	ChIP
Wang Ying Y	21925646	Brain Res	WB,IHC
Jordan M Buck	32138755	Epigenetics Chromatin	WB

## Stockage

Stockage:  
Stocker à -20°C. Stable pendant un an après l'expédition.

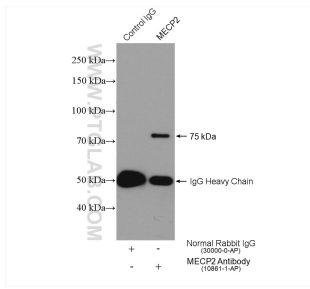
Tampon de stockage:  
PBS avec azoture de sodium à 0,02 % et glycérol à 50 % pH 7,3  
L'aliquotage n'est pas nécessaire pour le stockage à -20C

\*\*\* Les 20ul contiennent 0,1% de BSA.

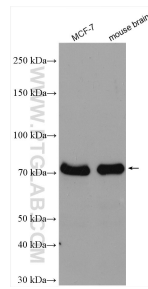
For technical support and original validation data for this product please contact:  
T: 1 (888) 4PTGLAB (1-888-478-4522) (toll free in USA), or 1(312) 455-8498 (outside USA)  
E: proteintech@ptglab.com  
W: ptglab.com

This product is exclusively available under Proteintech Group brand and is not available to purchase from any other manufacturer.

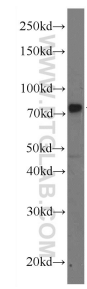
# Données de validation sélectionnées



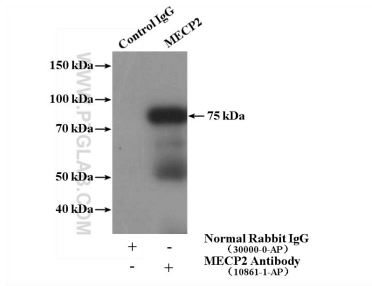
IP result of anti-MECP2 (IP:10861-1-AP, 4ug; Detection:10861-1-AP 1:500) with HEK-293T cells lysate 1640 ug.



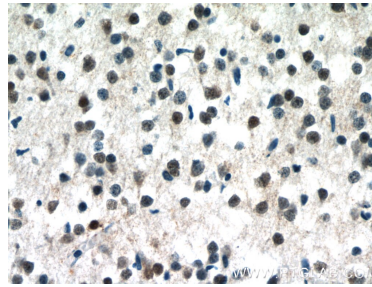
Various lysates were subjected to SDS PAGE followed by western blot with 10861-1-AP (MECP2 antibody) at dilution of 1:2000 incubated at room temperature for 1.5 hours.



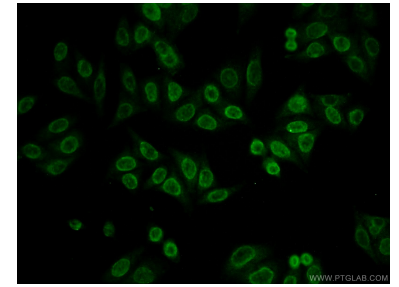
MDA-MB-453s cells were subjected to SDS PAGE followed by western blot with 10861-1-AP (MECP2 Antibody) at dilution of 1:600 incubated at room temperature for 1.5 hours.



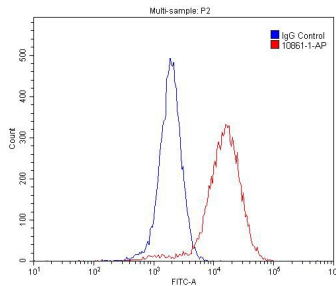
IP Result of anti-MECP2 (IP:10861-1-AP, 4ug; Detection:10861-1-AP 1:500) with MCF-7 cells lysate 1280ug.



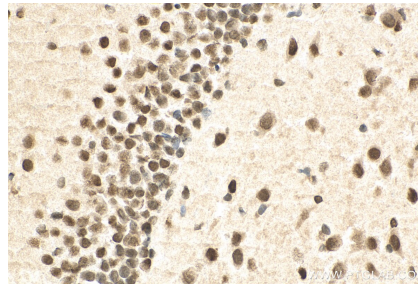
Immunohistochemical analysis of paraffin-embedded human brain tissue slide using 10861-1-AP (MECP2 Antibody) at dilution of 1:50 (under 40x lens).



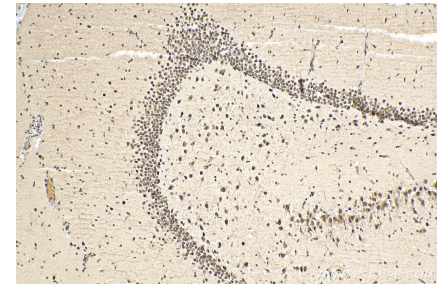
Immunofluorescent analysis of HepG2 cells using 10861-1-AP (MECP2 antibody) at dilution of 1:50 and Alexa Fluor 488-conjugated AffiniPure Goat Anti-Rabbit IgG(H+L).



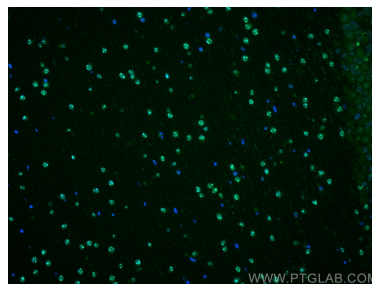
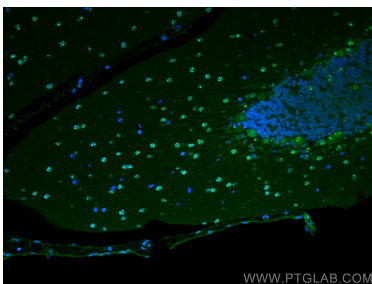
1X10<sup>6</sup> NIH/3T3 cells were stained with 0.2ug MECP2 antibody (10861-1-AP, red) and control antibody (blue). Alexa Fluor 488-conjugated AffiniPure Goat Anti-Rabbit IgG(H+L) with dilution 1:1500. Cells were fixed with 4% PFA and permeabilized with 0.1% Triton X-100.



Immunohistochemical analysis of paraffin-embedded rat brain tissue slide using 10861-1-AP (MECP2 antibody) at dilution of 1:200 (under 40x lens). Heat mediated antigen retrieval with Tris-EDTA buffer (pH 9.0).



Immunohistochemical analysis of paraffin-embedded rat brain tissue slide using 10861-1-AP (MECP2 antibody) at dilution of 1:200 (under 10x lens). Heat mediated antigen retrieval with Tris-EDTA buffer (pH 9.0).



Immunofluorescent analysis of (4% PFA) fixed mouse cerebellum tissue using MECP2 antibody (10861-1-AP) at dilution of 1:200 and CoraLite®488-Conjugated AffiniPure Goat Anti-Rabbit IgG(H+L).

Immunofluorescent analysis of (4% PFA) fixed mouse cerebellum tissue using MECP2 antibody (10861-1-AP) at dilution of 1:200 and CoraLite®488-Conjugated AffiniPure Goat Anti-Rabbit IgG(H+L).