

À des fins de recherche uniquement

Anticorps Polyclonal de lapin anti-Endoglin/CD105



Numéro de catalogue: 10862-1-AP

Phare

23 Publications

Informations de base

Numéro de catalogue:
10862-1-AP

Taille:
150ul, Concentration: 500 µg/ml by
Nanodrop;

Hôte:
Lapin

Isotype:
IgG

Immunogen Catalog Number:
AG1287

Numéro d'acquisition GenBank:
BC014271

Identification du gène (NCBI):
2022

Nom complet:
endoglin

MW calculé
71 kDa

MW observés:
75-90 kDa, 170-180 kDa

Méthode de purification:
Purification par affinité contre
l'antigène

Dilutions recommandées:
WB 1:500-1:1000
IP 0.5-4.0 ug for IP and 1:200-1:1000
for WB
IHC 1:1000-1:4000

Applications

Applications testées:
FC, IHC, IP, WB, ELISA

Demandes citées:
FC, IF, IHC, WB

Spécificité de l'espèce:
Humain, rat, souris

Espèces citées:
bovin, Humain, rat, souris

Remarque-IHC: il est suggéré de démasquer l'antigène avec un tampon de TE buffer pH 9,0; (*) À défaut, le démasquage de l'antigène peut être effectué avec un tampon citrate pH 6,0.

Contrôles positifs:

WB : tissu placentaire humain,

IP : tissu pulmonaire de souris,

IHC : tissu de cancer du sein humain, tissu de cancer du foie humain, tissu placentaire humain, tissu rénal de rat

Informations générales

Endoglin (ENG, CD105) is a homodimeric cell membrane glycoprotein of 180 kDa, composed of disulphide-linked subunits of 90-95 kDa. Endoglin is a proliferation-associated and hypoxia-inducible protein mainly expressed on vascular endothelial cells. It acts as an accessory receptor for transforming growth factor beta (TGF-β) and is involved in vascular development and remodelling. The important role of Endoglin in angiogenesis and in tumor progression makes it an ideal target for antiangiogenic therapy and a good marker for tumor prognosis. (PMID: 1326540; 14528280; 21737653; 12773481)

Publications notables

| Autrice | Pubmed ID | Journal | Application |
|---------------|-----------|-----------------|-------------|
| Qian Huang | 36210850 | Front Pharmacol | IHC,WB |
| Yuri Miyakawa | 36087522 | Arch Oral Biol | IF |
| Tao Chen | 34822812 | Exp Cell Res | WB,IHC |

Stockage

Stockage:

Stocker à -20°C. Stable pendant un an après l'expédition.

Tampon de stockage:

PBS avec azoture de sodium à 0,02 % et glycérol à 50 % pH 7,3

L'aliquotage n'est pas nécessaire pour le stockage à -20C

*** Les 20ul contiennent 0,1% de BSA.

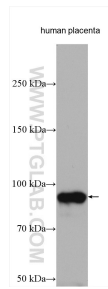
For technical support and original validation data for this product please contact:

T: 1 (888) 4PTGLAB (1-888-478-4522) (toll free in USA), or 1(312) 455-8498 (outside USA)

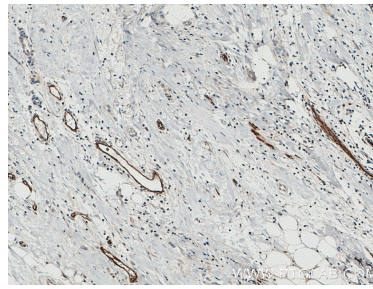
E: proteintech@ptglab.com
W: ptglab.com

This product is exclusively available under Proteintech Group brand and is not available to purchase from any other manufacturer.

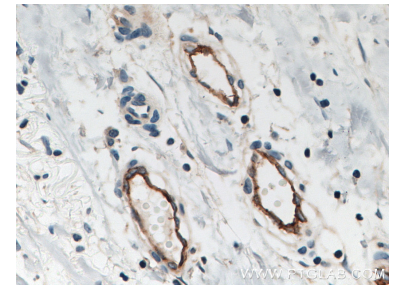
Données de validation sélectionnées



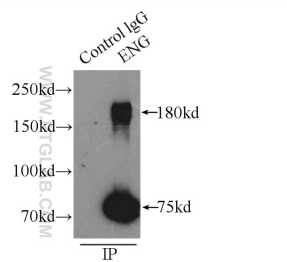
human placenta tissue was subjected to SDS PAGE followed by western blot with 10862-1-AP (Endoglin/CD105 antibody) at dilution of 1:500 incubated at room temperature for 1.5 hours.



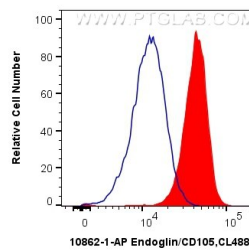
Immunohistochemical analysis of paraffin-embedded human breast cancer tissue slide using 10862-1-AP (Endoglin/CD105 antibody) at dilution of 1:4000 (under 10x lens. Heat mediated antigen retrieval with Tris-EDTA buffer (pH 9.0).



Immunohistochemical analysis of paraffin-embedded human breast cancer tissue slide using 10862-1-AP (Endoglin/CD105 antibody) at dilution of 1:4000 (under 40x lens. Heat mediated antigen retrieval with Tris-EDTA buffer (pH 9.0).



IP Result of anti-Endoglin/CD105 (IP:10862-1-AP, 3ug; Detection:10862-1-AP 1:300) with mouse lung tissue lysate 4000ug.



1X10⁶ THP-1 cells were intracellularly stained with 0.4 ug Anti-Human Endoglin/CD105 (10862-1-AP) and Coralite® 488-Conjugated AffiniPure Goat Anti-Rabbit IgG(H+L) at dilution 1:1000 (red), or 0.4 ug Isotype Control (blue). Cells were fixed with 4% PFA and permeabilized with Flow Cytometry Perm Buffer (PF00011-C).