

À des fins de recherche uniquement

# Anticorps Polyclonal de lapin anti-VPS18



Numéro de catalogue: 10901-1-AP

4 Publications

## Informations de base

Numéro de catalogue:

10901-1-AP

Taille:

150ul, Concentration: 260 µg/ml by Nanodrop and 227 µg/ml by Bradford method using BSA as the standard;

Hôte:

Lapin

Isotype:

IgG

Immunogen Catalog Number:

AG1140

Numéro d'acquisition GenBank:

BC001513

Identification du gène (NCBI):

57617

Nom complet:

vacuolar protein sorting 18 homolog (S. cerevisiae)

MW calculé

110 kDa

MW observés:

100-110 kDa

Méthode de purification:

Purification par affinité contre l'antigène

Dilutions recommandées:

WB 1:500-1:1000

IP 0.5-4.0 ug for IP and 1:200-1:1000 for WB

IHC 1:50-1:500

IF 1:20-1:200

## Applications

Applications testées:

FC, IF, IHC, IP, WB, ELISA

Demandes citées:

WB

Spécificité de l'espèce:

Humain, rat, souris

Espèces citées:

Humain

**Remarque-IHC: il est suggéré de démasquer l'antigène avec un tampon de TE buffer pH 9,0; (\*) A défaut, le démasquage de l'antigène peut être effectué avec un tampon citrate pH 6,0.**

Contrôles positifs:

WB : tissu cérébral de souris,

IP : cellules HeLa,

IHC : tissu de cancer du poumon humain, tissu testiculaire de souris, tissu testiculaire humain

IF : cellules A549,

## Informations générales

Vesicle mediated protein sorting plays an important role in segregation of intracellular molecules into distinct organelles. Vps18 is a central member of Vps-C complex. Vps18 may play a role in vesicle-mediated protein trafficking to lysosomal compartments and in membrane docking/fusion reactions of late endosomes/lysosomes.

## Publications notables

Autrice	Pubmed ID	Journal	Application
Anna Ulbricht	23434281	Curr Biol	WB
Changyi Ji	30744518	Autophagy	WB
Wang Zheng	35913916	Autophagy	WB

## Stockage

Stockage:

Stocker à -20°C. Stable pendant un an après l'expédition.

Tampon de stockage:

PBS avec azoture de sodium à 0,02 % et glycérol à 50 % pH 7,3

L'aliquotage n'est pas nécessaire pour le stockage à -20C

\*\*\* Les 20ul contiennent 0,1% de BSA.

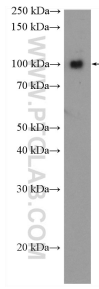
For technical support and original validation data for this product please contact:

T: 1 (888) 4PTGLAB (1-888-478-4522) (toll free in USA), or 1(312) 455-8498 (outside USA)

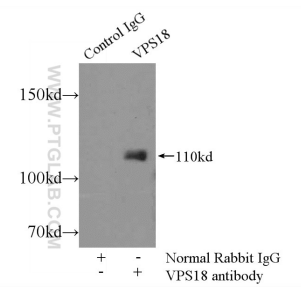
E: [proteintech@ptglab.com](mailto:proteintech@ptglab.com)  
W: [ptglab.com](http://ptglab.com)

This product is exclusively available under Proteintech Group brand and is not available to purchase from any other manufacturer.

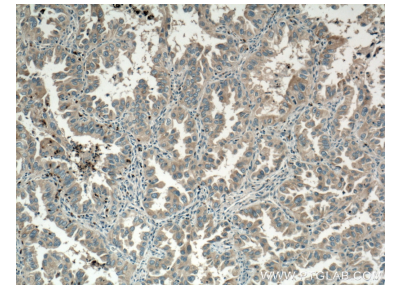
## Données de validation sélectionnées



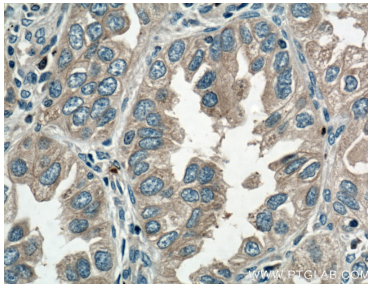
mouse brain tissue were subjected to SDS PAGE followed by western blot with 10901-1-AP (VPS18 antibody) at dilution of 1:500 incubated at room temperature for 1.5 hours.



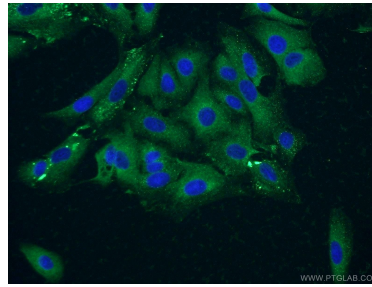
IP Result of anti-VPS18 (IP:10901-1-AP, 4 $\mu$ g; Detection:10901-1-AP 1:300) with HeLa cells lysate 920 $\mu$ g.



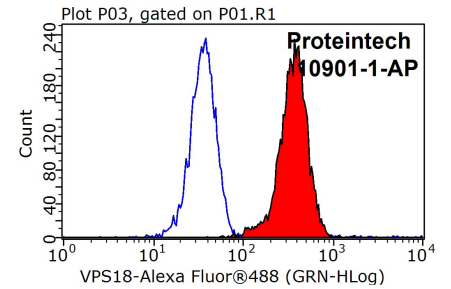
Immunohistochemical analysis of paraffin-embedded human lung cancer tissue slide using 10901-1-AP (VPS18 Antibody) at dilution of 1:200 (under 10x lens). Heat mediated antigen retrieval with Tris-EDTA buffer (pH 9.0).



Immunohistochemical analysis of paraffin-embedded human lung cancer tissue slide using 10901-1-AP (VPS18 Antibody) at dilution of 1:200 (under 40x lens). Heat mediated antigen retrieval with Tris-EDTA buffer (pH 9.0).



Immunofluorescent analysis of A549 cells using 10901-1-AP (VPS18 antibody) at dilution of 1:50 and Alexa Fluor 488-conjugated AffiniPure Goat Anti-Rabbit IgG(H+L).



1X10<sup>6</sup> K-562 cells were stained with 0.2 $\mu$ g VPS18 antibody (10901-1-AP, red) and control antibody (blue). Fixed with 90% MeOH blocked with 3% BSA (30 min). Alexa Fluor 488-conjugated AffiniPure Goat Anti-Rabbit IgG(H+L) with dilution 1:1000.