

À des fins de recherche uniquement

Anticorps Polyclonal de lapin anti-Myosin Light Chain 2/MLC-2V



Numéro de catalogue: 10906-1-AP

182 Publications

Informations de base

Numéro de catalogue:

10906-1-AP

Taille:

150ul, Concentration: 500 µg/ml by Nanodrop;

Hôte:

Lapin

Isotype:

IgG

Immunogen Catalog Number:

AG1356

Numéro d'acquisition GenBank:

BC015821

Identification du gène (NCBI):

4633

Nom complet:

myosin, light chain 2, regulatory, cardiac, slow

MW calculé

19 kDa

MW observés:

19 kDa

Méthode de purification:

Purification par affinité contre l'antigène

Dilutions recommandées:

WB 1:2000-1:16000

IP 0.5-4.0 ug for IP and 1:500-1:1000 for WB

IHC 1:300-1:1200

IF 1:50-1:500

Applications

Applications testées:

IF, IHC, IP, WB, ELISA

Demandes citées:

FC, IF, IHC, WB

Spécificité de l'espèce:

Humain, poisson-zèbre, rat, souris

Espèces citées:

Humain, poisson-zèbre, porc, rat, singe, souris

Remarque-IHC: il est suggéré de démasquer l'antigène avec un tampon de TE buffer pH 9,0; (*) À défaut, le démasquage de l'antigène peut être effectué avec un tampon citrate pH 6,0.

Contrôles positifs:

WB : tissu cardiaque de souris, tissu cardiaque de rat

IP : tissu cardiaque de souris,

IHC : tissu cardiaque de souris, tissu cardiaque de rat, tissu cardiaque humain

IF : tissu cardiaque de souris,

Informations générales

MYL2, also named as MLC-2v and MLC-2, is ventricular/cardiac muscle isoform. Defects in MYL2 are the cause of cardiomyopathy familial hypertrophic type 10 (CMH10). Defects in MYL2 are the cause of cardiomyopathy familial hypertrophic with mid-left ventricular chamber type 2 (MVC2). MYL2 has been widely used as a marker of mature ventricular cardiomyocytes. There are four genes of myosin light chain 2 (MLC2): MYL2 (MLC2v), MYL5, MYL7 (MLC2a) and MYL9 (MLC2c). While usually myosin light chain 2 is referred to MYL2.

Publications notables

Autrice	Pubmed ID	Journal	Application
Arvin H Soepriatna	34777603	Cell Mol Bioeng	IF
Bin Li	28962583	Stem Cell Res Ther	IF
A Gaignerie	30254308	Sci Rep	IF

Stockage

Stockage:

Stocker à -20°C. Stable pendant un an après l'expédition.

Tampon de stockage:

PBS avec azoture de sodium à 0,02 % et glycérol à 50 % pH 7,3

L'aliquotage n'est pas nécessaire pour le stockage à -20C

*** Les 20ul contiennent 0,1% de BSA.

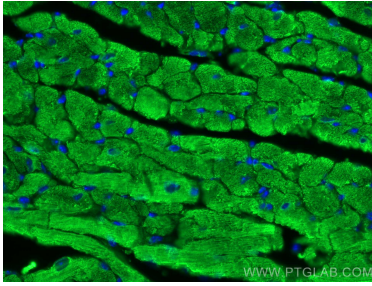
For technical support and original validation data for this product please contact:

T: 1 (888) 4PTGLAB (1-888-478-4522) (toll free in USA), or 1(312) 455-8498 (outside USA)

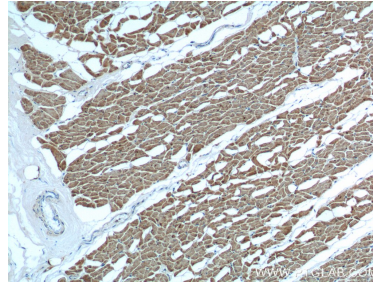
E: proteintech@ptglab.com
W: ptglab.com

This product is exclusively available under Proteintech Group brand and is not available to purchase from any other manufacturer.

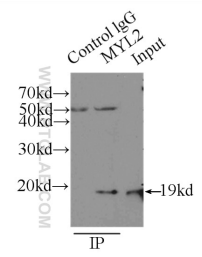
Données de validation sélectionnées



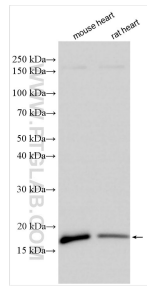
Immunofluorescent analysis of (4% PFA) fixed mouse heart tissue using Myosin Light Chain 2/MLC-2V antibody (10906-1-AP) at dilution of 1:200 and CoraLite®488-Conjugated AffiniPure Goat Anti-Rabbit IgG(H+L).



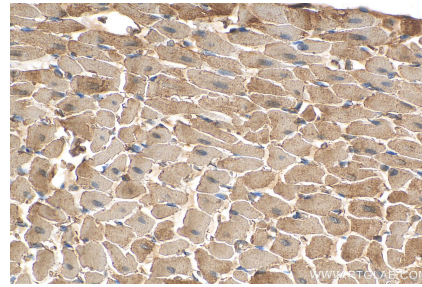
Immunohistochemical analysis of paraffin-embedded human heart tissue slide using 10906-1-AP (Myosin Light Chain 2 antibody at dilution of 1:200 (under 10x lens).



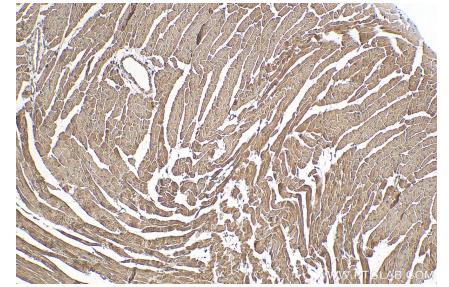
IP Result of anti-Myosin Light Chain 2 (IP:10906-1-AP, 3ug; Detection:10906-1-AP 1:500) with mouse heart tissue lysate 6000ug.



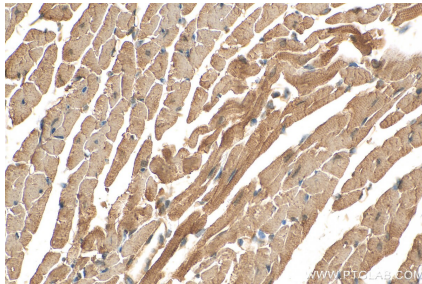
Various lysates were subjected to SDS PAGE followed by western blot with 10906-1-AP (Myosin Light Chain 2/MLC-2V antibody) at dilution of 1:8000 incubated at room temperature for 1.5 hours.



Immunohistochemical analysis of paraffin-embedded rat heart tissue slide using 10906-1-AP (Myosin Light Chain 2/MLC-2V antibody) at dilution of 1:400 (under 40x lens). Heat mediated antigen retrieval with Tris-EDTA buffer (pH 9.0).



Immunohistochemical analysis of paraffin-embedded mouse heart tissue slide using 10906-1-AP (Myosin Light Chain 2/MLC-2V antibody) at dilution of 1:600 (under 10x lens). Heat mediated antigen retrieval with Tris-EDTA buffer (pH 9.0).



Immunohistochemical analysis of paraffin-embedded mouse heart tissue slide using 10906-1-AP (Myosin Light Chain 2/MLC-2V antibody) at dilution of 1:600 (under 40x lens). Heat mediated antigen retrieval with Tris-EDTA buffer (pH 9.0).