

À des fins de recherche uniquement

Anticorps Polyclonal de lapin anti-SULT1A1



Numéro de catalogue: 10911-2-AP

7 Publications

Informations de base

Numéro de catalogue:
10911-2-AP

Taille:
150ul, Concentration: 400 µg/ml by Nanodrop and 270 µg/ml by Bradford method using BSA as the standard;

Hôte:
Lapin

Isotype:
IgG

Immunogen Catalog Number:
AG1344

Numéro d'acquisition GenBank:
BC000923

Identification du gène (NCBI):
6817

Nom complet:
sulfotransferase family, cytosolic, 1A, phenol-preferring, member 1

MW calculé:
34 kDa

MW observés:
34 kDa

Méthode de purification:
Purification par affinité contre l'antigène

Dilutions recommandées:
WB 1:500-1:2000
IP 0.5-4.0 ug for IP and 1:500-1:2000 for WB
IF 1:20-1:200

Applications

Applications testées:
FC, IF, IP, WB, ELISA

Demandes citées:
IHC, WB

Spécificité de l'espèce:
Humain, rat, souris

Espèces citées:
Humain, rat, souris

Contrôles positifs:

WB : tissu hépatique de souris, tissu hépatique de rat

IP : tissu hépatique de souris,

IF : cellules HepG2,

Informations générales

SULT1A1, also named as ST1A1, P-PST 1, ST1A3, Ts-PST, P-PST 1, STP and STP1, belongs to the sulfotransferase 1 family. It catalyzes the sulfate conjugation of catecholamines, phenolic drugs and neurotransmitters. SULT1A1 is also responsible for the sulfation and activation of minoxidil. It mediates the metabolic activation of carcinogenic N-hydroxyarylamines to DNA binding products and could so participate as modulating factor of cancer risk. SULT1A1 is one of two phenol sulfotransferases with thermostable enzyme activity.

Publications notables

Autrice	Pubmed ID	Journal	Application
Shu Xiao-Hong XH	22096581	PLoS One	WB, IHC
Xu Zheng	30116486	Oxid Med Cell Longev	WB
Bin Jia	33391410	J Cancer	IHC, WB

Stockage

Stockage:

Stocker à -20°C. Stable pendant un an après l'expédition.

Tampon de stockage:

PBS avec azoture de sodium à 0,02 % et glycérol à 50 % pH 7,3

L'aliquotage n'est pas nécessaire pour le stockage à -20C

*** Les 20ul contiennent 0,1% de BSA.

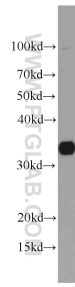
For technical support and original validation data for this product please contact:

T: 1 (888) 4PTGLAB (1-888-478-4522) (toll free in USA), or 1(312) 455-8498 (outside USA)

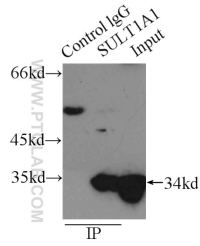
E: proteintech@ptglab.com
W: ptglab.com

This product is exclusively available under Proteintech Group brand and is not available to purchase from any other manufacturer.

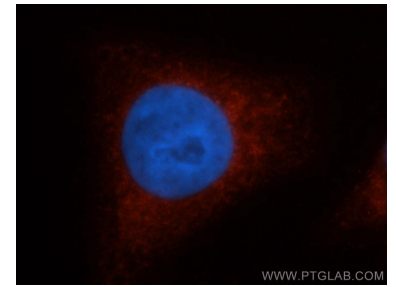
Données de validation sélectionnées



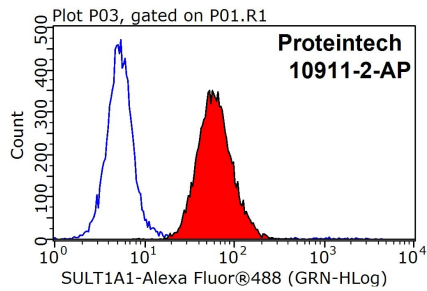
mouse liver tissue were subjected to SDS PAGE followed by western blot with 10911-2-AP (SULT1A1 antibody) at dilution of 1:1000 incubated at room temperature for 1.5 hours.



IP Result of anti-SULT1A1 (IP:10911-2-AP, 3ug; Detection:10911-2-AP 1:1000) with mouse liver tissue lysate 12500ug.



Immunofluorescent analysis of HepG2 cells, using SULT1A1 antibody 10911-2-AP at 1:50 dilution and Rhodamine-labeled goat anti-rabbit IgG (red). Blue pseudocolor = DAPI (fluorescent DNA dye).



1X10⁶ HepG2 cells were stained with 0.2ug SULT1A1 antibody (10911-2-AP, red) and control antibody (blue). Fixed with 90% MeOH blocked with 3% BSA (30 min). Alexa Fluor 488-conjugated AffiniPure Goat Anti-Rabbit IgG(H+L) with dilution 1:1000.