

À des fins de recherche uniquement

Anticorps Polyclonal de lapin anti-MYL3



Numéro de catalogue: 10913-1-AP

2 Publications

Informations de base

Numéro de catalogue:
10913-1-AP

Taille:
150ul, Concentration: 550 µg/ml by Nanodrop and 300 µg/ml by Bradford method using BSA as the standard;

Hôte:
Lapin

Isotype:
IgG

Immunogen Catalog Number:
AG1364

Numéro d'acquisition GenBank:
BC009790

Identification du gène (NCBI):
4634

Nom complet:
myosin, light chain 3, alkali;
ventricular, skeletal, slow

MW calculé

22 kDa

MW observés:

22-27 kDa

Méthode de purification:

Purification par affinité contre l'antigène

Dilutions recommandées:

WB 1:5000-1:50000

IP 0.5-4.0 ug for IP and 1:2000-1:14000 for WB

IHC 1:500-1:2000

Applications

Applications testées:
FC, IHC, IP, WB, ELISA

Demandes citées:
WB

Spécificité de l'espèce:
Humain, rat, souris

Espèces citées:
Humain

Remarque-IHC: il est suggéré de démasquer l'antigène avec un tampon de TE buffer pH 9,0; (*) A défaut, 'le démasquage de l'antigène peut être 'effectué avec un tampon citrate pH 6,0.

Contrôles positifs:

WB : tissu cardiaque de souris, tissu cardiaque de rat, tissu cardiaque humain, tissu de muscle squelettique de souris

IP : tissu cardiaque de souris,

IHC : tissu cardiaque humain, tissu de cancer du poumon humain

Informations générales

MYL3, also named as MLC1v, is an essential light chain of myosin that is associated with muscle contraction. It is expressed in ventricular and slow skeletal muscle. MYL3 may serve as a target for caspase-3 in dying cardiomyocytes. Mutations of MYL3 gene cause hypertrophic cardiomyopathy. MYL3 has been identified as potential serum biomarker for drug induced myotoxicity. Great increase in MYL3 serum concentration has been observed in rats with cardiac and skeletal muscle injury. (PMID:21685905)

Publications notables

Autrice	Pubmed ID	Journal	Application
Yuan Lin	37159428	J Proteome Res	WB
Addona Terri A TA	21685905	Nat Biotechnol	WB

Stockage

Stockage:

Stocker à -20°C. Stable pendant un an après l'expédition.

Tampon de stockage:

PBS avec azoture de sodium à 0,02 % et glycérol à 50 % pH 7,3

L'aliquotage n'est pas nécessaire pour le stockage à -20C

*** Les 20ul contiennent 0,1% de BSA.

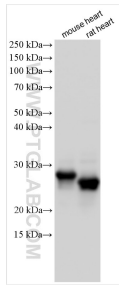
For technical support and original validation data for this product please contact:

T: 1 (888) 4PTGLAB (1-888-478-4522) (toll free in USA), or 1(312) 455-8498 (outside USA)

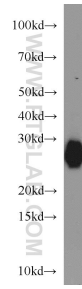
E: proteintech@ptglab.com
W: ptglab.com

This product is exclusively available under Proteintech Group brand and is not available to purchase from any other manufacturer.

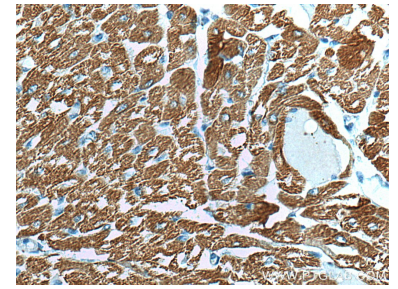
Données de validation sélectionnées



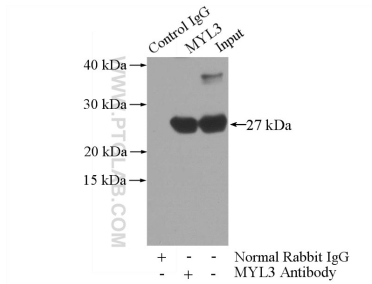
Various lysates were subjected to SDS PAGE followed by western blot with 10913-1-AP (MYL3 antibody) at dilution of 1:30000 incubated at room temperature for 1.5 hours.



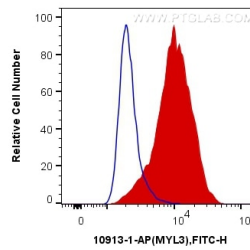
mouse heart tissue were subjected to SDS PAGE followed by western blot with 10913-1-AP (MYL3 antibody) at dilution of 1:1000 incubated at room temperature for 1.5 hours.



Immunohistochemical analysis of paraffin-embedded human heart tissue slide using 10913-1-AP (MYL3 antibody) at dilution of 1:1000 (under 40x lens). Heat mediated antigen retrieval with Tris-EDTA buffer (pH 9.0).



IP Result of anti-MYL3 (IP:10913-1-AP, 3ug; Detection:10913-1-AP 1:7000) with mouse heart tissue lysate 4000ug.



1X10⁶ C2C12 cells were intracellularly stained with 0.4 ug Anti-Human MYL3 (10913-1-AP) and CoraLite®488-Conjugated AffiniPure Goat Anti-Rabbit IgG(H+L) at dilution 1:1000 (red), or 0.4 ug Control Antibody. Cells were fixed with 4% PFA and permeabilized with Flow Cytometry Perm Buffer (PF00011-C).