

À des fins de recherche uniquement

Anticorps Polyclonal de lapin anti-CDC27; APC3



Numéro de catalogue: 10918-1-AP

Phare

3 Publications

Informations de base

Numéro de catalogue:

10918-1-AP

Taille:

150ul, Concentration: 700 µg/ml by Nanodrop and 387 µg/ml by Bradford method using BSA as the standard;

Hôte:

Lapin

Isotype:

IgG

Immunogen Catalog Number:

AG1345

Numéro d'acquisition GenBank:

BC011656

Identification du gène (NCBI):

996

Nom complet:

cell division cycle 27 homolog (S. cerevisiae)

MW calculé

92 kDa

MW observés:

92 kDa

Méthode de purification:

Purification par affinité contre l'antigène

Dilutions recommandées:

WB 1:2000-1:16000

IP 0.5-4.0 ug for IP and 1:500-1:1000 for WB

IHC 1:50-1:500

IF 1:20-1:200

Applications

Applications testées:

FC, IF, IHC, IP, WB, ELISA

Demandes citées:

IHC, WB

Spécificité de l'espèce:

Humain, rat, souris

Espèces citées:

Humain

Remarque-IHC: il est suggéré de démasquer l'antigène avec un tampon de TE buffer pH 9,0; (*) A défaut, 'le démasquage de l'antigène peut être 'effectué avec un tampon citrate pH 6,0.

Contrôles positifs:

WB : cellules Jurkat, cellules K-562

IP : cellules K-562,

IHC : tissu de cancer de la prostate humain,

IF : cellules SH-SY5Y,

Informations générales

CDC27/APC3 is a component of the anaphase-promoting complex (APC/cyclosome), which is composed of eight subunits and highly conserved in eukaryotic cells. The APC/cyclosome complex acts as a cell cycle-regulated E3 ubiquitin ligase which mediates ubiquitination and subsequent degradation of target proteins, and lead to the progression control through mitosis and the G1 phase of the cell cycle.

Publications notables

Autrice	Pubmed ID	Journal	Application
Lin Qiu	35242701	Front Oncol	WB,IHC
Yiming He	33931584	Cell Death Dis	WB
Zhuoying Feng	27974673	Oncotarget	IHC

Stockage

Stockage:

Stocker à -20°C. Stable pendant un an après l'expédition.

Tampon de stockage:

PBS avec azoture de sodium à 0,02 % et glycérol à 50 % pH 7,3

L'aliquotage n'est pas nécessaire pour le stockage à -20C

*** Les 20ul contiennent 0,1% de BSA.

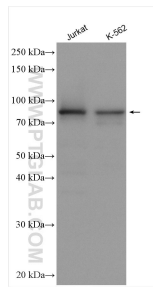
For technical support and original validation data for this product please contact:

T: 1 (888) 4PTGLAB (1-888-478-4522) (toll free in USA), or 1(312) 455-8498 (outside USA)

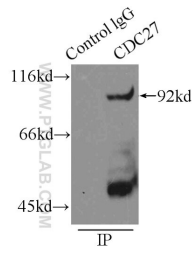
E: proteintech@ptglab.com
W: ptglab.com

This product is exclusively available under Proteintech Group brand and is not available to purchase from any other manufacturer.

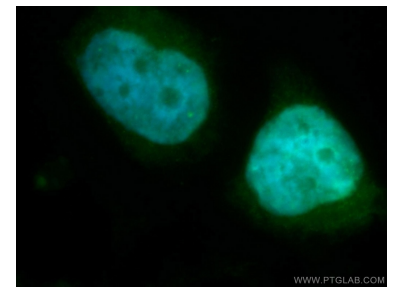
Données de validation sélectionnées



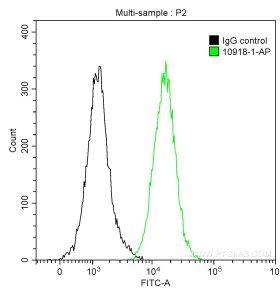
Various lysates were subjected to SDS PAGE followed by western blot with 10918-1-AP (CDC27; APC3 antibody) at dilution of 1:8000 incubated at room temperature for 1.5 hours.



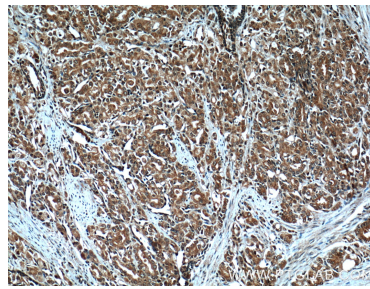
IP Result of anti-CDC27; APC3 (IP:10918-1-AP, 3ug; Detection:10918-1-AP 1:600) with K-562 cells lysate 11000ug.



Immunofluorescent analysis of SH-SY5Y cells, using CDC27 antibody 10918-1-AP at 1:50 dilution and FITC-labeled donkey anti-rabbit IgG(green). Blue pseudocolor = DAPI (fluorescent DNA dye).



1X10⁶ K-562 cells were intracellularly stained with 0.2 ug Anti-Human CDC27; APC3 (10918-1-AP) and CoraLite®488-Conjugated AffiniPure Goat Anti-Rabbit IgG(H+L) at dilution 1:1000 (green), and 0.2 ug Control Antibody. Cells were fixed with 90% MeOH.



Immunohistochemical analysis of paraffin-embedded human prostate cancer tissue slide using 10918-1-AP (CDC27; APC3 Antibody) at dilution of 1:200 (under 10x lens). Heat mediated antigen retrieval with Tris-EDTA buffer (pH 9.0).