

À des fins de recherche uniquement

Anticorps Polyclonal de lapin anti-THOC1



Numéro de catalogue: 10920-1-AP

13 Publications

Informations de base

Numéro de catalogue:

10920-1-AP

Taille:

150ul, Concentration: 550 µg/ml by Nanodrop and 333 µg/ml by Bradford method using BSA as the standard;

Hôte:

Lapin

Isotype:

IgG

Immunogen Catalog Number:

AG1352

Numéro d'acquisition GenBank:

BC010381

Identification du gène (NCBI):

9984

Nom complet:

THO complex 1

MW calculé

84 kDa

MW observés:

84 kDa

Méthode de purification:

Purification par affinité contre l'antigène

Dilutions recommandées:

WB 1:500-1:1000

IP 0.5-4.0 ug for IP and 1:500-1:1000 for WB

IHC 1:20-1:200

Applications

Applications testées:

IHC, IP, WB, ELISA

Demandes citées:

IF, IHC, WB

Spécificité de l'espèce:

Humain, rat, souris

Espèces citées:

Humain, rat, souris

Remarque-IHC: il est suggéré de démasquer l'antigène avec un tampon de TE buffer pH 9.0; (*) A défaut, le démasquage de l'antigène peut être effectué avec un tampon citrate pH 6,0.

Contrôles positifs:

WB : cellules HEK-293,

IP : cellules HEK-293,

IHC : tissu de cancer du côlon humain,

Informations générales

THOC1 (THO complex subunit 1), also known as Tho1, P84, HPR1 or P84N5, is a 657 amino acid nuclear matrix protein and is evolutionarily conserved from yeast to humans. THOC1 contains one death domain and is a component of the heteromultimeric THO/TREX (transcription/export) complex along with THOC2, THOC3, BAT1 and ALY. The THO/TREX complex is recruited to transcribed genes and travels along with RNA polymerase II (Pol II) during elongation, coupling elongating Pol II with RNA splicing and export factors. THOC1 is expressed at high levels in breast cancer cells and at relatively low levels in normal epithelia. A reduction of THOC1 in cancer cell lines results in promoted cancer cell apoptosis and reduced cell proliferation. This suggests that cancer cells are dependent on the high levels of THOC1 expression and therefore THOC1 may be a good target for cancer therapy. This antibody recognizes the 84kd THOC1 protein.

Publications notables

Autrice	Pubmed ID	Journal	Application
Lingcai Zhao	36084138	PLoS Pathog	WB,IF
Chenchen Liu	26545775	Biochem Biophys Res Commun	WB, IHC
Le Zhang	35579750	Cell Oncol (Dordr)	WB

Stockage

Stockage:

Stocker à -20°C. Stable pendant un an après l'expédition.

Tampon de stockage:

PBS avec azoture de sodium à 0,02 % et glycérol à 50 % pH 7,3

L'aliquotage n'est pas nécessaire pour le stockage à -20C

*** Les 20ul contiennent 0,1% de BSA.

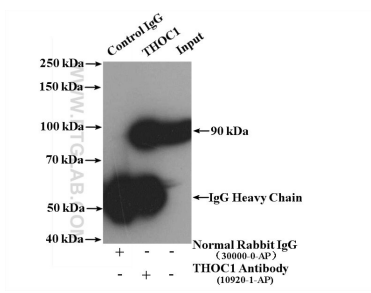
For technical support and original validation data for this product please contact:

T: 1 (888) 4PTGLAB (1-888-478-4522) (toll free in USA), or 1(312) 455-8498 (outside USA)

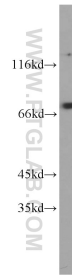
E: proteintech@ptglab.com
W: ptglab.com

This product is exclusively available under Proteintech Group brand and is not available to purchase from any other manufacturer.

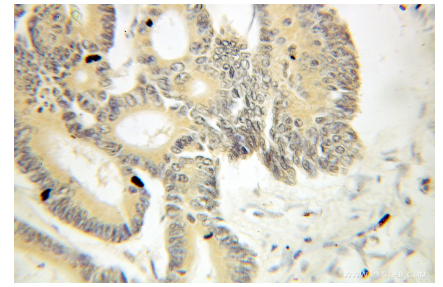
Données de validation sélectionnées



IP result of anti-THOC1 (IP:10920-1-AP, 4ug; Detection:10920-1-AP 1:500) with HEK-293 cells lysate 1600 ug.



HEK-293 cells were subjected to SDS PAGE followed by western blot with 10920-1-AP (THOC1 antibody) at dilution of 1:500 incubated at room temperature for 1.5 hours.



Immunohistochemical analysis of paraffin-embedded human colon cancer using 10920-1-AP (THOC1 antibody) at dilution of 1:100 (under 10x lens).