

À des fins de recherche uniquement

# Anticorps Polyclonal de lapin anti-E2F4



Numéro de catalogue: 10923-1-AP

Phare

9 Publications

## Informations de base

Numéro de catalogue:

10923-1-AP

Taille:

150ul, Concentration: 600 µg/ml by Nanodrop and 300 µg/ml by Bradford method using BSA as the standard;

Hôte:

Lapin

Isotype:

IgG

Immunogen Catalog Number:

AG1365

Numéro d'acquisition GenBank:

BC033180

Identification du gène (NCBI):

1874

Nom complet:

E2F transcription factor 4, p107/p130 binding

MW calculé

44 kDa

MW observés:

60-70 kDa

Méthode de purification:

Purification par affinité contre l'antigène

Dilutions recommandées:

WB 1:500-1:2000

IP 0.5-4.0 ug for IP and 1:500-1:2000 for WB

IHC 1:20-1:200

## Applications

Applications testées:

IHC, IP, WB, ELISA

Demandes citées:

ChIP, IF, IHC, IP, WB

Spécificité de l'espèce:

Humain, rat, souris

Espèces citées:

Humain, souris

**Remarque-IHC: il est suggéré de démasquer l'antigène avec un tampon de TE buffer pH 9,0; (\*) A défaut, 'le démasquage de l'antigène peut être 'effectué avec un tampon citrate pH 6,0.**

Contrôles positifs:

WB : cellules A431, cellules HeLa, cellules HL-60, cellules Jurkat, cellules NIH/3T3, cellules Raji

IP : tissu cérébral de souris,

IHC : tissu de lymphome humain,

## Informations générales

Transcription factor E2F4 (E2F4) is a transcription activator that binds DNA cooperatively with DP proteins through the E2 recognition site 5'-TTTC[CG]CGC-3' found in the promoter region of a number of genes whose products are involved in cell cycle regulation or in DNA replication. The DRTF1/E2F complex functions in the control of cell-cycle progression from G1 to S phase. E2F-4 binds with high affinity to RBL1 and RBL2. In some instances, can also bind RB protein. The observed molecular weight of 60-70 kDa is the phosphorylation of E2F4 protein.

## Publications notables

Autrice	Pubmed ID	Journal	Application
Yinghui Wang	34601503	Cell Death Dis	WB
Xiwen Zhang	29987913	J Cell Physiol	WB,IHC
Yuting Wang	35023014	Protein Cell	WB,ChIP

## Stockage

Stockage:

Stocker à -20°C. Stable pendant un an après l'expédition.

Tampon de stockage:

PBS avec azoture de sodium à 0,02 % et glycérol à 50 % pH 7,3

L'aliquotage n'est pas nécessaire pour le stockage à -20C

\*\*\* Les 20ul contiennent 0,1% de BSA.

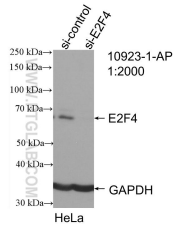
For technical support and original validation data for this product please contact:

T: 1 (888) 4PTGLAB (1-888-478-4522) (toll free in USA), or 1(312) 455-8498 (outside USA)

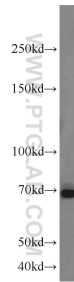
E: proteintech@ptglab.com  
W: ptglab.com

This product is exclusively available under Proteintech Group brand and is not available to purchase from any other manufacturer.

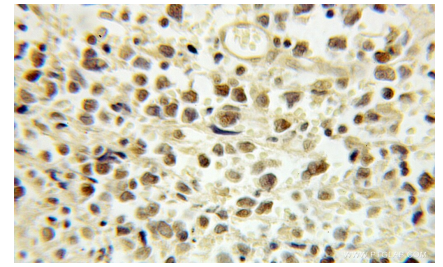
## Données de validation sélectionnées



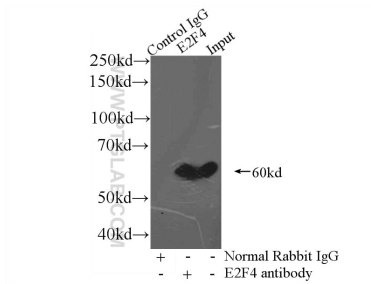
WB result of E2F4 antibody (10923-1-AP; 1:2000; incubated at room temperature for 1.5 hours) with sh-Control and sh-E2F4 transfected HeLa cells.



A431 cells were subjected to SDS PAGE followed by western blot with 10923-1-AP (E2F4 antibody) at dilution of 1:1000 incubated at room temperature for 1.5 hours.



Immunohistochemical analysis of paraffin-embedded human lymphoma using 10923-1-AP (E2F4 antibody) at dilution of 1:100 (under 10x lens).



IP Result of anti-E2F4 (IP:10923-1-AP, 3ug; Detection:10923-1-AP 1:1000) with mouse brain tissue lysate 3600ug.