

À des fins de recherche uniquement

# Anticorps Polyclonal de lapin anti-Lactoferrin



Numéro de catalogue: 10933-1-AP

Phare

5 Publications

## Informations de base

Numéro de catalogue:

10933-1-AP

Taille:

150ul, Concentration: 600 µg/ml by Nanodrop;

Hôte:

Lapin

Isotype:

IgG

Immunogen Catalog Number:

AG1379

Numéro d'acquisition GenBank:

BC015822

Identification du gène (NCBI):

4057

Nom complet:

lactotransferrin

MW calculé

80 kDa

MW observés:

30,51,80 kDa

Méthode de purification:

Purification par affinité contre l'antigène

Dilutions recommandées:

WB 1:1000-1:4000

IP 0.5-4.0 µg for IP and 1:500-1:1000 for WB

IHC 1:20-1:200

## Applications

Applications testées:

IHC, IP, WB, ELISA

Demandes citées:

IHC, WB

Spécificité de l'espèce:

Humain

Espèces citées:

Humain, souris

Contrôles positifs:

WB : salive humain, cellules HEK-293, tissu pancréatique humain

IP : cellules HeLa,

IHC : tissu hépatique humain, tissu d'hyperplasie de la prostate humain

**Remarque-IHC: il est suggéré de démasquer l'antigène avec un tampon de TE buffer pH 9,0; (\*) À défaut, le démasquage de l'antigène peut être effectué avec un tampon citrate pH 6,0.**

## Informations générales

LTF (Lactotransferrin) is also named as GIG12, LF and belongs to the transferrin family. It is an iron binding transport protein which can bind two atoms of ferric iron in association with the binding of an anion, usually bicarbonate. LTF is also an important protein component of the innate immune system that is broadly distributed within the body fluids. It can contribute to the activation of both the innate and adaptive immune responses by promoting the recruitment of leukocytes and activation of dendritic cells (PMID:18453607). This protein has 2 isoforms produced by alternative promoter usage. The human LTF can be isolated two fragments, an N-terminal tryptic fragment having an MW of 30 kDa and a C-terminal tryptic fragment having an MW of 50 kDa by a mild tryptic digest (PMID:3790094).

## Publications notables

Autrice	Pubmed ID	Journal	Application
Qiong Huang	36185743	Bioact Mater	WB
Rujia Qin	34266418	Cancer Cell Int	WB, IHC
Kaoru Araki-Sasaki	30214321	Int Med Case Rep J	IHC

## Stockage

Stockage:

Stocker à -20°C. Stable pendant un an après l'expédition.

Tampon de stockage:

PBS avec azoture de sodium à 0,02 % et glycérol à 50 % pH 7,3

L'aliquotage n'est pas nécessaire pour le stockage à -20C

\*\*\* Les 20ul contiennent 0,1% de BSA.

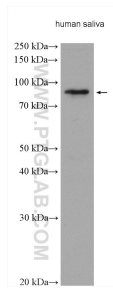
For technical support and original validation data for this product please contact:

T: 1 (888) 4PTGLAB (1-888-478-4522) (toll free in USA), or 1(312) 455-8498 (outside USA)

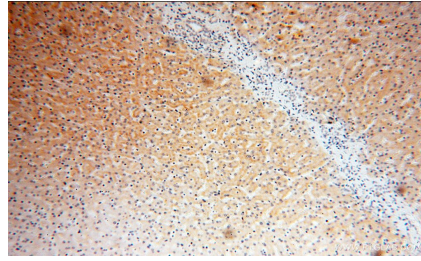
E: proteintech@ptglab.com  
W: ptglab.com

This product is exclusively available under Proteintech Group brand and is not available to purchase from any other manufacturer.

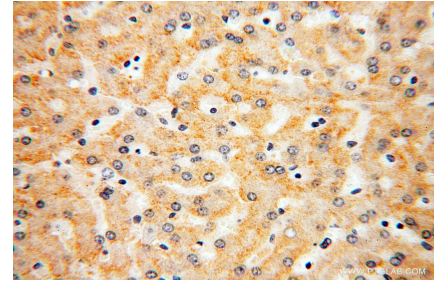
## Données de validation sélectionnées



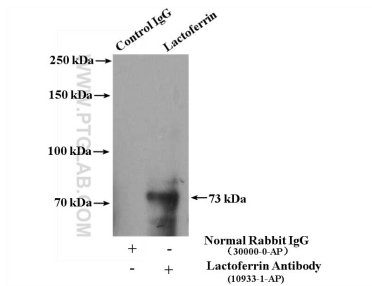
human saliva were subjected to SDS PAGE followed by western blot with 10933-1-AP (Lactoferrin antibody) at dilution of 1:2000 incubated at room temperature for 1.5 hours.



Immunohistochemical analysis of paraffin-embedded human liver using 10933-1-AP (Lactoferrin antibody) at dilution of 1:50 (under 10x lens).



Immunohistochemical analysis of paraffin-embedded human liver using 10933-1-AP (Lactoferrin antibody) at dilution of 1:50 (under 40x lens).



IP Result of anti-Lactoferrin (IP:10933-1-AP, 4 $\mu$ g; Detection:10933-1-AP 1:600) with HeLa cells lysate 4000 $\mu$ g.