

À des fins de recherche uniquement

# Anticorps Polyclonal de lapin anti-CRH/CRF



Numéro de catalogue: 10944-1-AP

23 Publications

## Informations de base

Numéro de catalogue:  
10944-1-AP

Taille:  
150ul , Concentration: 1200 µg/ml by  
Nanodrop and 400 µg/ml by Bradford  
method using BSA as the standard;

Hôte:  
Lapin

Isotype:  
IgG

Immunogen Catalog Number:  
AG1371

Numéro d'acquisition GenBank:  
BC011031

Identification du gène (NCBI):  
1392

Nom complet:  
CRH/CRF

MW calculé  
21 kDa

MW observés:  
35-38 kDa

Méthode de purification:  
Purification par affinité contre  
l'antigène

Dilutions recommandées:  
WB 1:200-1:1000  
IHC 1:50-1:500  
IF 1:50-1:500

## Applications

Applications testées:  
IF, IHC, WB, ELISA

Demandes citées:  
IF, IHC, WB

Spécificité de l'espèce:  
Humain, rat, souris

Espèces citées:  
Humain, poisson-zèbre, porc, rat, souris, Microtus  
ochrogaster

**Remarque-IHC: il est suggéré de démasquer  
l'antigène avec un tampon de TE buffer pH  
9.0; (\*) À défaut, 'le démasquage de  
l'antigène peut être effectué avec un  
tampon citrate pH 6,0.**

Contrôles positifs:

WB : tissu cérébral humain, tissu cérébral de rat

IHC : tissu de cancer du pancréas humain, tissu  
cérébral de souris

IF : tissu cérébral de souris,

## Informations générales

CRH, also called CRF or corticoliberin, is a peptide hormone and neurotransmitter involved in the stress response. Marked reduction in this protein has been observed in association with Alzheimer disease. In addition to production in the hypothalamus, this protein is also synthesized in peripheral tissues, such as T lymphocytes and is highly expressed in the placenta. In the placenta it is a marker that determines the length of gestation and the timing of parturition and delivery.

## Publications notables

Autrice	Pubmed ID	Journal	Application
Fengmei Wei	36150631	Peptides	IHC
Zhihui Gai	27538655	J Neurol Sci	WB,IF
Hwan-Deuk Kim	36359090	Animals (Basel)	WB

## Stockage

Stockage:

Stocker à -20°C. Stable pendant un an après l'expédition.

Tampon de stockage:

PBS avec azoture de sodium à 0,02 % et glycérol à 50 % pH 7,3

L'aliquotage n'est pas nécessaire pour le stockage à -20C

\*\*\* Les 20ul contiennent 0,1% de BSA.

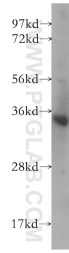
For technical support and original validation data for this product please contact:

T: 1 (888) 4PTGLAB (1-888-478-4522) (toll free  
in USA), or 1(312) 455-8498 (outside USA)

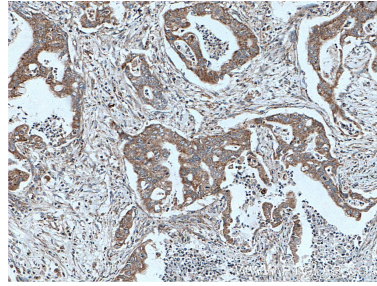
E: proteintech@ptglab.com  
W: ptglab.com

This product is exclusively available under Proteintech Group brand and is not available to purchase from any other manufacturer.

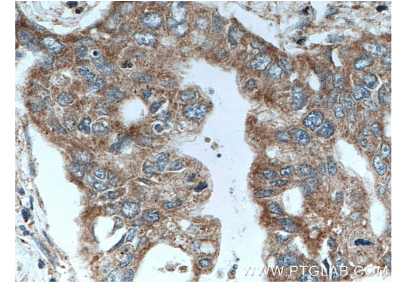
## Données de validation sélectionnées



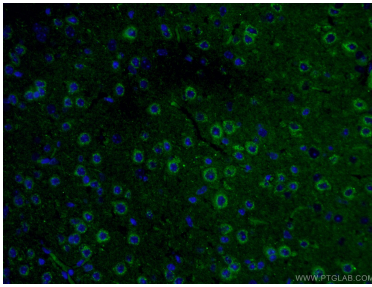
human brain tissue were subjected to SDS PAGE followed by western blot with 10944-1-AP (CRH/CRF antibody) at dilution of 1:400 incubated at room temperature for 1.5 hours.



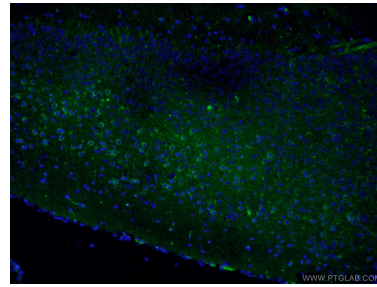
Immunohistochemical analysis of paraffin-embedded human pancreas cancer tissue slide using 10944-1-AP (CRH/CRF antibody) at dilution of 1:200 (under 10x lens. Heat mediated antigen retrieval with Tris-EDTA buffer (pH 9.0).



Immunohistochemical analysis of paraffin-embedded human pancreas cancer tissue slide using 10944-1-AP (CRH/CRF antibody) at dilution of 1:200 (under 40x lens. Heat mediated antigen retrieval with Tris-EDTA buffer (pH 9.0).



Immunofluorescent analysis of (4% PFA) fixed mouse brain tissue using 10944-1-AP (CRH/CRF antibody) at dilution of 1:100 and CoraLite488-Conjugated AffiniPure Goat Anti-Rabbit IgG(H+L).



Immunofluorescent analysis of (4% PFA) fixed mouse brain tissue using 10944-1-AP (CRH/CRF antibody) at dilution of 1:100 and CoraLite488-Conjugated AffiniPure Goat Anti-Rabbit IgG(H+L).