

À des fins de recherche uniquement

Anticorps Polyclonal de lapin anti-SUB1



Numéro de catalogue: 10948-2-AP

Phare

2 Publications

Informations de base

Numéro de catalogue:

10948-2-AP

Taille:

150ul, Concentration: 850 µg/ml by Nanodrop and 467 µg/ml by Bradford method using BSA as the standard;

Hôte:

Lapin

Isotype:

IgG

Immunogen Catalog Number:

AG1390

Numéro d'acquisition GenBank:

BC009610

Identification du gène (NCBI):

10923

Nom complet:

SUB1 homolog (S. cerevisiae)

MW calculé

14 kDa

MW observés:

18-23 kDa

Méthode de purification:

Purification par affinité contre l'antigène

Dilutions recommandées:

WB 1:500-1:2000

IHC 1:50-1:500

IF 1:50-1:500

Applications

Applications testées:

IF, IHC, WB, ELISA

Demandes citées:

IHC, WB

Spécificité de l'espèce:

Humain, rat, souris

Espèces citées:

souris

Remarque-IHC: il est suggéré de démasquer l'antigène avec un tampon de TE buffer pH 9,0; (*) A défaut, 'le démasquage de l'antigène peut être 'effectué avec un tampon citrate pH 6,0.

Contrôles positifs:

WB : cellules HeLa, cellules A549

IHC : tissu de cancer du pancréas humain,

IF : cellules HeLa,

Informations générales

SUB1 gene encodes activated RNA polymerase II transcriptional coactivator p15, also termed as positive cofactor 4 (PC4) or p14. SUB1 is a sort of general coactivator that functions in assembling and stabilization of transcription complex. It has DNA binding activity and is localized in the nucleus, multiple modification sites of phosphorylation or acetylation may turn it appear slightly shifted molecular weight. Catalog#10948-2-AP is a rabbit polyclonal antibody raised against full-length human SUB1. This antibody recognize 14-16 kDa (P14 or P15), 20 kDa (phospho form) and 30 kDa (Dimer form).

Publications notables

Autrice	Pubmed ID	Journal	Application
Li Lu L	22807403	J Cell Biochem	WB
Ho Jiawei J	19086899	J Proteome Res	WB,IHC

Stockage

Stockage:

Stocker à -20°C. Stable pendant un an après l'expédition.

Tampon de stockage:

PBS avec azote de sodium à 0,02 % et glycérol à 50 % pH 7,3

L'aliquotage n'est pas nécessaire pour le stockage à -20C

*** Les 20ul contiennent 0,1% de BSA.

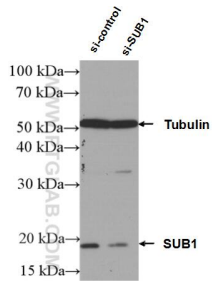
For technical support and original validation data for this product please contact:

T: 1 (888) 4PTGLAB (1-888-478-4522) (toll free in USA), or 1(312) 455-8498 (outside USA)

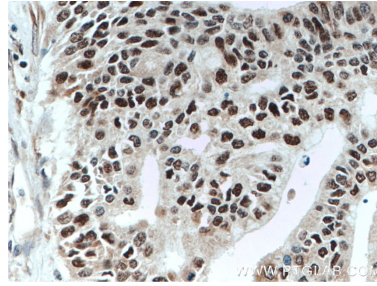
E: proteintech@ptglab.com
W: ptglab.com

This product is exclusively available under Proteintech Group brand and is not available to purchase from any other manufacturer.

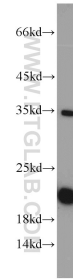
Données de validation sélectionnées



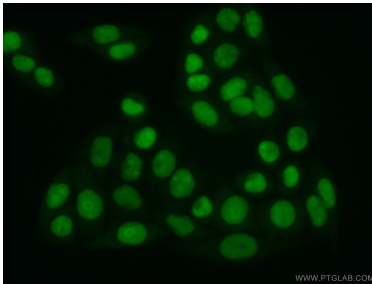
WB result of SUB1 antibody (10948-2-AP; 1:3000; incubated at room temperature for 1.5 hours) with sh-Control and sh-SUB1 transfected A549 cells.



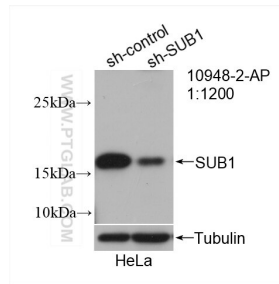
Immunohistochemical analysis of paraffin-embedded human pancreas cancer tissue slide using 10948-2-AP (SUB1 antibody) at dilution of 1:200 (under 40x lens. Heat mediated antigen retrieval with Tris-EDTA buffer (pH 9.0).



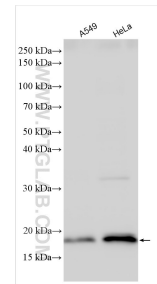
HeLa cells were subjected to SDS PAGE followed by western blot with 10948-2-AP (SUB1 antibody) at dilution of 1:1000 incubated at room temperature for 1.5 hours.



Immunofluorescent analysis of (10% Formaldehyde) fixed HeLa cells using 10948-2-AP (SUB1 antibody) at dilution of 1:50 and Alexa Fluor 488-conjugated AffiniPure Goat Anti-Rabbit IgG(H+L).



WB result of SUB1 antibody (10948-2-AP; 1:1200; incubated at room temperature for 1.5 hours) with sh-Control and sh-SUB1 transfected HeLa cells.



Various lysates were subjected to SDS PAGE followed by western blot with 10948-2-AP (SUB1 antibody) at dilution of 1:2000 incubated at room temperature for 1.5 hours.