

À des fins de recherche uniquement

Anticorps Polyclonal de lapin anti-SLAM/CD150



Numéro de catalogue: 10949-2-AP

Informations de base

Numéro de catalogue: 10949-2-AP	Numéro d'acquisition GenBank: BC012602	Méthode de purification: Purification par affinité contre l'antigène
Taille: 150ul , Concentration: 600 µg/ml by Nanodrop and 307 µg/ml by Bradford method using BSA as the standard;	Identification du gène (NCBI): 6504	Dilutions recommandées: WB 1:200-1:1000
Hôte: Lapin	Nom complet: signaling lymphocytic activation molecule family member 1	
Isotype: IgG	MW calculé: 37 kDa	
Immunogen Catalog Number: AG1386	MW observés: 70 kDa	

Applications

Applications testées: WB, ELISA	Contrôles positifs: WB : cellules Jurkat,
Spécificité de l'espèce: Humain	

Informations générales

Signaling Lymphocytic activation molecule (SLAM, also known as SLAMF1 or CD150) is a 70-95 kDa transmembrane glycoprotein that belongs to the immunoglobulin gene superfamily. SLAM is constitutively expressed on peripheral blood memory T-cells, T-cell clones, immature thymocytes and a proportion of B-cells, and is rapidly induced on naive T-cells after activation. SLAM is involved in T cell stimulation and cytokine production, and may play an important role in the regulation of immune responses to pathogens.

Stockage

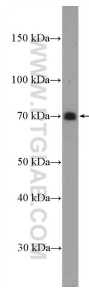
Stockage:
Stocker à -20°C. Stable pendant un an après l'expédition.
Tampon de stockage:
PBS avec azoture de sodium à 0,02 % et glycérol à 50 % pH 7,3
L'aliquotage n'est pas nécessaire pour le stockage à -20C

***** Les 20ul contiennent 0,1% de BSA.**

For technical support and original validation data for this product please contact:
T: 1 (888) 4PTGLAB (1-888-478-4522) (toll free in USA), or 1(312) 455-8498 (outside USA)
E: proteintech@ptglab.com
W: ptglab.com

This product is exclusively available under Proteintech Group brand and is not available to purchase from any other manufacturer.

Données de validation sélectionnées



Jurkat cells were subjected to SDS PAGE followed by western blot with 10949-2-AP (SLAM/CD150) antibody at dilution of 1:300 incubated at room temperature for 1.5 hours.