

À des fins de recherche uniquement

Anticorps Polyclonal de lapin anti-FIS1



Numéro de catalogue: 10956-1-AP

Phare

233 Publications

Informations de base

Numéro de catalogue:
10956-1-AP

Taille:
150ul, Concentration: 700 µg/ml by
Nanodrop;

Hôte:
Lapin

Isotype:
IgG

Immunogen Catalog Number:
AG1409

Numéro d'acquisition GenBank:
BC009428

Identification du gène (NCBI):
51024

Nom complet:
fission 1 (mitochondrial outer
membrane) homolog (S. cerevisiae)

MW calculé
17 kDa

MW observés:
17 kDa

Méthode de purification:
Purification par affinité contre
l'antigène

Dilutions recommandées:
WB 1:500-1:3000
IP 0.5-4.0 ug for IP and 1:500-1:1000
for WB
IHC 1:50-1:500
IF 1:50-1:200

Applications

Applications testées:
IF, IHC, IP, WB, ELISA

Demandes citées:
CoIP, IF, IHC, IP, WB

Spécificité de l'espèce:
Humain, porc, rat, souris

Espèces citées:
bovin, Chèvre, Humain, poisson-zèbre, porc, poulet, rat,
souris, Hamster, squirrel

**Remarque-IHC: il est suggéré de démasquer
l'antigène avec un tampon de TE buffer pH
9,0; (*) À défaut, 'le démasquage de
l'antigène peut être 'effectué avec un
tampon citrate pH 6,0.**

Contrôles positifs:

WB : cellules HeLa, cellules HEK-293, cellules HepG2,
cellules Jurkat, cellules PC-12, cellules SH-SY5Y, tissu
cardiaque de rat, tissu cardiaque de souris, tissu
cérébral de porc, tissu cérébral de rat, tissu cérébral de
souris, tissu splénique de rat, tissu splénique de souris

IP: cellules HeLa,

IHC : tissu cérébral de rat, tissu cérébral humain

IF : cellules Hepa1-6, cellules HepG2

Informations générales

Fis1 (fission 1) is an integral mitochondrial outer membrane protein that participates in mitochondrial fission by interacting with dynamin-related protein 1 (Drp1). Excessive mitochondrial fission is associated with the pathology of a number of neurodegenerative or neurodevelopmental diseases. Increased expression of Fis1 has been found in Huntington's disease (HD)-affected brain, Alzheimer's disease (AD) patients, and autism spectrum disorder. This antibody was raised against the full-length of human Fis1 protein, and recognizes endogenous Fis1 protein in various lysates. (PMID: 21257639, 21459773, 23333625)

Publications notables

Autrice	Pubmed ID	Journal	Application
Xudong Yao	30273654	Pharmacol Res	WB
Maria Manczak	27677309	Hum Mol Genet	IF
Na Jiang	32975326	Cell Prolif	WB,IHC

Stockage

Stockage:
Stocker à -20°C. Stable pendant un an après l'expédition.

Tampon de stockage:
PBS avec azoture de sodium à 0,02 % et glycérol à 50 % pH 7,3
L'aliquotage n'est pas nécessaire pour le stockage à -20C

*** Les 20ul contiennent 0,1% de BSA.

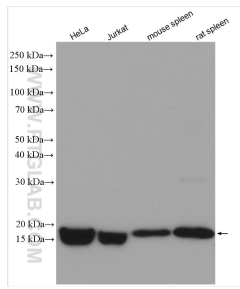
For technical support and original validation data for this product please contact:

T: 1 (888) 4PTGLAB (1-888-478-4522) (toll free
in USA), or 1(312) 455-8498 (outside USA)

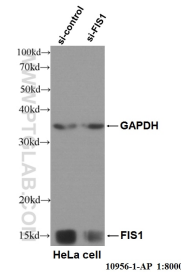
E: proteintech@ptglab.com
W: ptglab.com

This product is exclusively available under Proteintech Group brand and is not available to purchase from any other manufacturer.

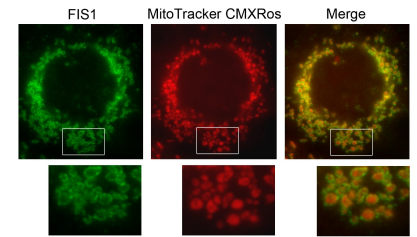
Données de validation sélectionnées



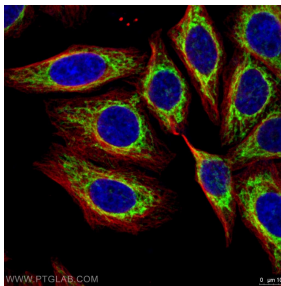
Various lysates were subjected to SDS PAGE followed by western blot with 10956-1-AP (FIS1 antibody) at dilution of 1:1500 incubated at room temperature for 1.5 hours.



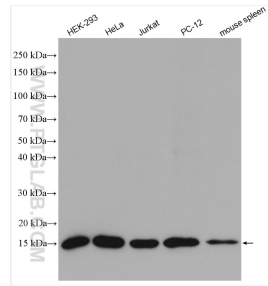
WB result of FIS1 antibody (10956-1-AP, 1:8,000) with si-Control and si-FIS1 transfected HeLa cells.



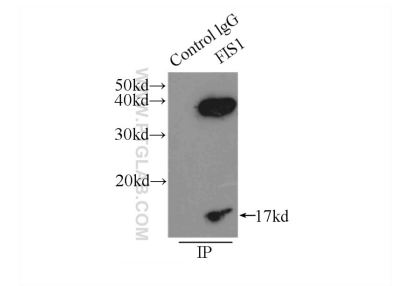
IF result of anti-FIS1(10956-1-AP,1:100) with Hepa1-6 cell by Dr. Steven Eugene Smith. Mitochondrion outer membrane (Green) Stain.



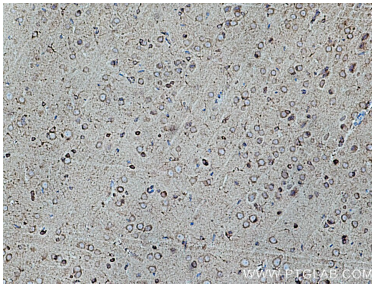
Immunofluorescent analysis of (4% PFA) fixed HepG2 cells using 10956-1-AP (FIS1 antibody) at dilution of 1:100 and Alexa Fluor 488-Conjugated AffiniPure Goat Anti-Rabbit IgG(H+L).



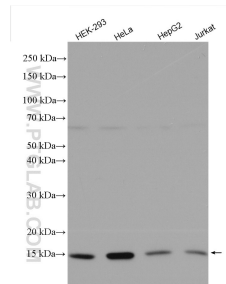
Various lysates were subjected to SDS PAGE followed by western blot with 10956-1-AP (FIS1 antibody) at dilution of 1:7000 incubated at room temperature for 1.5 hours.



IP Result of anti-FIS1 (IP:10956-1-AP, 3ug; Detection:10956-1-AP 1:500) with HeLa cells lysate 3000ug.



Immunohistochemical analysis of paraffin-embedded rat brain tissue slide using 10956-1-AP (FIS1 antibody) at dilution of 1:200 (under 10x lens). Heat mediated antigen retrieval with Tris-EDTA buffer (pH 9.0).



Various lysates were subjected to SDS PAGE followed by western blot with 10956-1-AP (FIS1 antibody) at dilution of 1:10000 incubated at room temperature for 1.5 hours.