

À des fins de recherche uniquement

Anticorps Polyclonal de lapin anti-PSMG2



Numéro de catalogue: 10959-1-AP

Informations de base

Numéro de catalogue: 10959-1-AP	Numéro d'acquisition GenBank: BC013356	Méthode de purification: Purification par affinité contre l'antigène
Taille: 150ul , Concentration: 400 µg/ml by Nanodrop and 267 µg/ml by Bradford method using BSA as the standard;	Identification du gène (NCBI): 56984	Dilutions recommandées: WB 1:500-1:3000 IHC 1:20-1:200
Hôte: Lapin	Nom complet: proteasome (prosome, macropain) assembly chaperone 2	
Isotype: IgG	MW calculé: 29 kDa	
Immunogen Catalog Number: AG1400	MW observés: 29 kDa	

Applications

Applications testées:

IHC, WB, ELISA

Spécificité de l'espèce:

Humain, rat, souris

Remarque-IHC: il est suggéré de démasquer l'antigène avec un tampon de TE buffer pH 9.0; (*) À défaut, le démasquage de l'antigène peut être effectué avec un tampon citrate pH 6,0.

Contrôles positifs:

WB : cellules HeLa, cellules HepG2, cellules Jurkat

IHC : tissu de cancer de la prostate humain,

Informations générales

Proteasome assembly chaperone 2 (PSMG2), also named as Hepatocellular carcinoma-susceptibility protein 3, Tumor necrosis factor superfamily member 5-induced protein 1. It has a function as a chaperone protein which promotes assembly of the 20S proteasome as part of a heterodimer with PSMG1. The PSMG1-PSMG2 heterodimer binds to the PSMA5 and PSMA7 proteasome subunits, promotes assembly of the proteasome alpha subunits into the heteroheptameric alpha ring and prevents alpha ring dimerization. It is widely expressed with highest levels in lung, brain and colon, moderately expressed in muscle, stomach, spleen and heart and weakly expressed in small intestine, pancreas and liver, highly expressed in hepatocellular carcinomas with low levels in surrounding liver tissue. Molecular mass of PSMG2 is 29kD.

Stockage

Stockage:

Stocker à -20°C. Stable pendant un an après l'expédition.

Tampon de stockage:

PBS avec azoture de sodium à 0,02 % et glycérol à 50 % pH 7,3

L'aliquotage n'est pas nécessaire pour le stockage à -20C

*** Les 20ul contiennent 0,1% de BSA.

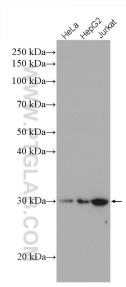
For technical support and original validation data for this product please contact:

T: 1 (888) 4PTGLAB (1-888-478-4522) (toll free in USA), or 1(312) 455-8498 (outside USA)

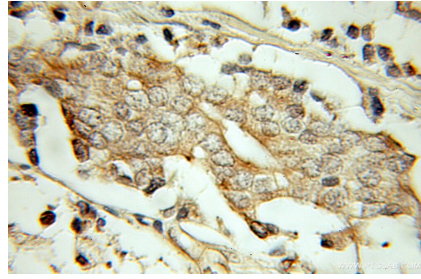
E: proteintech@ptglab.com
W: ptglab.com

This product is exclusively available under Proteintech Group brand and is not available to purchase from any other manufacturer.

Données de validation sélectionnées



Various lysates were subjected to SDS PAGE followed by western blot with 10959-1-AP (PSMG2 antibody) at dilution of 1:1500 incubated at room temperature for 1.5 hours.



Immunohistochemical analysis of paraffin-embedded human prostate cancer using 10959-1-AP (PSMG2 antibody) at dilution of 1:50 (under 10x lens).