

À des fins de recherche uniquement

Anticorps Polyclonal de lapin anti-CDC34



Numéro de catalogue: 10964-2-AP

3 Publications

Informations de base

Numéro de catalogue:
10964-2-AP

Taille:
150ul, Concentration: 450 µg/ml by Nanodrop and 240 µg/ml by Bradford method using BSA as the standard;

Hôte:
Lapin

Isotype:
IgG

Immunogen Catalog Number:
AG1438

Numéro d'acquisition GenBank:
BC009850

Identification du gène (NCBI):

997
Nom complet:
cell division cycle 34 homolog (S. cerevisiae)

MW calculé
34 kDa

MW observés:
34 kDa

Méthode de purification:
Purification par affinité contre l'antigène

Dilutions recommandées:
WB 1:200-1:1000
IP 0.5-4.0 ug for IP and 1:500-1:1000 for WB
IHC 1:20-1:200

Applications

Applications testées:
IHC, IP, WB, ELISA

Demandes citées:
WB

Spécificité de l'espèce:
Humain, rat, souris

Espèces citées:
Humain, souris

Remarque-IHC: il est suggéré de démasquer l'antigène avec un tampon de TE buffer pH 9,0; (*) A défaut, le démasquage de l'antigène peut être effectué avec un tampon citrate pH 6,0.

Contrôles positifs:

WB : tissu pancréatique humain, tissu cérébral humain

IP : tissu testiculaire de souris, cellules HEK-293

IHC : tissu de cancer de la prostate humain,

Informations générales

CDC34 is also named as UBCH3, UBE2R1 (Ubiquitin-conjugating enzyme E2 R1) and belongs to the ubiquitin-conjugating enzyme family. Cdc34 enzyme is itself a substrate for the type of polyubiquitin modification that is known to cause targeting of proteins for degradation. It is phosphorylated in vivo, providing yet another potential means for control of its activity. And the predominantly nuclear localization of this enzyme suggests that substrate molecules relevant to its cell cycle function are similarly located within the nucleus (PMID:8164658). Human CDC34 could substitute efficiently for yeast CDC34 (PMID:8248134). It can form a homodimer (PMID:8383676). This antibody can also recognize CDC34B (UBC3B) which is highly homologous to UBC3 (CDC34) with only 47 amino acid differences.

Publications notables

Autrice	Pubmed ID	Journal	Application
Muyu Xu	36275929	Biochem Biophys Rep	WB
Fabienne C Fiesel	24928900	J Cell Sci	WB
Stephen Gray	32640224	Cell Rep	WB

Stockage

Stockage:

Stocker à -20°C. Stable pendant un an après l'expédition.

Tampon de stockage:

PBS avec azoture de sodium à 0,02 % et glycérol à 50 % pH 7,3

L'aliquotage n'est pas nécessaire pour le stockage à -20C

*** Les 20ul contiennent 0,1% de BSA.

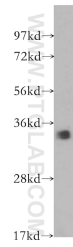
For technical support and original validation data for this product please contact:

T: 1 (888) 4PTGLAB (1-888-478-4522) (toll free in USA), or 1(312) 455-8498 (outside USA)

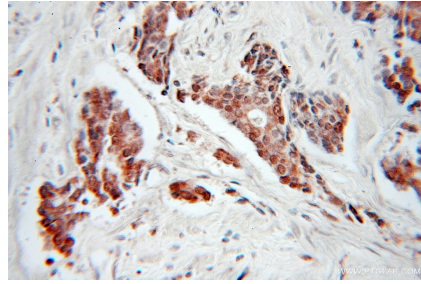
E: proteintech@ptglab.com
W: ptglab.com

This product is exclusively available under Proteintech Group brand and is not available to purchase from any other manufacturer.

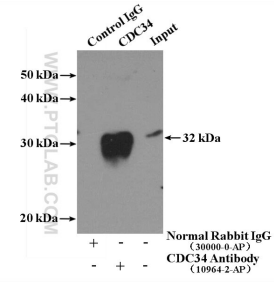
Données de validation sélectionnées



human pancreas tissue were subjected to SDS PAGE followed by western blot with 10964-2-AP (CDC34 antibody) at dilution of 1:300 incubated at room temperature for 1.5 hours.



Immunohistochemical analysis of paraffin-embedded human prostate cancer using 10964-2-AP (CDC34 antibody) at dilution of 1:100 (under 10x lens).



IP Result of anti-CDC34 (IP:10964-2-AP, 4ug; Detection:10964-2-AP 1:500) with mouse testis tissue lysate 4000ug.